

METROPOLITAN SQUARE

WASHINGTON, DC

RAPPAPORT







METROPOLITAN SQUARE

WASHINGTON, DC

Located on 14th St NW, Metropolitan Square is a 12-story office and retail building that offers dramatic views of The White House, U.S. Treasury and The Mall. With a full-height interior atrium, a three-level underground parking garage, and easy access to the Metro Center rail station.

DEMOGRAPHICS 2024

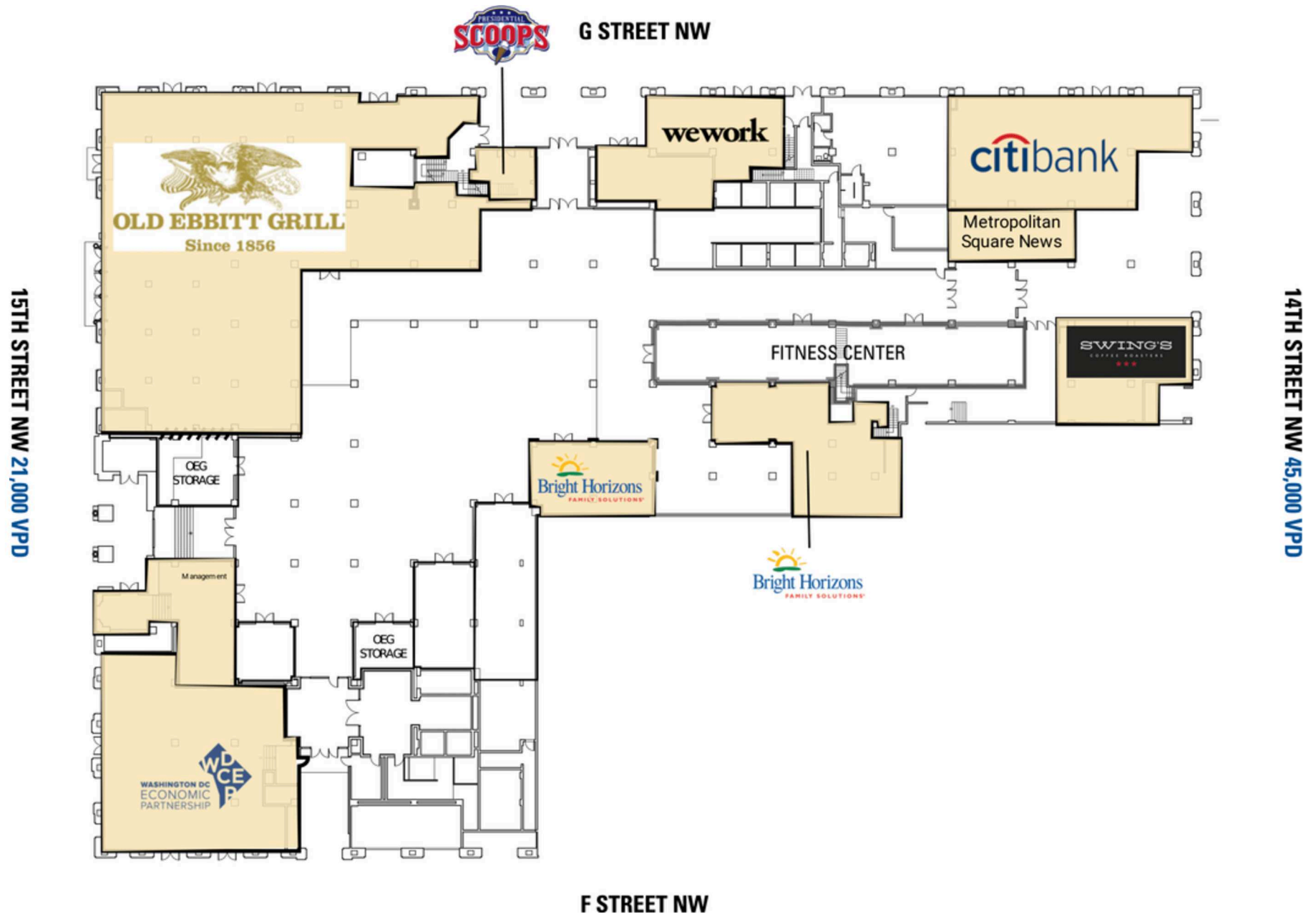
		.5 MILE	1 MILE	2 MILES
	POPULATION	3,441	54,302	199,326
	DAYTIME POPULATION	126,874	302,464	468,912
	HOUSEHOLD INCOME	\$137,611	\$121,837	\$131,279
	TRAFFIC COUNTS	19000 on 15th Street NW		

AREA RETAILERS



SITE PLAN

METROPOLITAN SQUARE | WASHINGTON, DC



METROPOLITAN SQUARE

WASHINGTON, DC



RAPPAPORT

METROPOLITAN SQUARE | 655 15TH STREET NW, WASHINGTON, DC

Michael Howard | mhoward@rappaportco.com | 571.382.1219

Kyle Gamber | kgamber@rappaportco.com | 571.382.1216

rappaportco.com