

CARLYLE OVERLOOK

ALEXANDRIA, VA

8 SF AVAILABLE

RAPPAPORT



Cassidy
Turley
Office Space
Available
703.770.3400
cassidy@cturley.com





2316

CARLYLE OVERLOOK

ALEXANDRIA, VA

A serene and walkable corner of bustling Alexandria, Carlyle Overlook presents street-front retail to a massive daytime population created by neighboring government agencies and companies such as the National Science Foundation, U.S. District Court, Patent and Trademark Offices, and the TSA Headquarters at Victory Center. Just a six-minute stroll to Eisenhower Avenue Metro Station (Yellow Line) and just off I-495, Carlyle Overlook delivers effortless convenience to Alexandria urbanites as well as an inviting ambience through outdoor patio space spanning the length of the highly visible storefront.

DEMOGRAPHICS 2024

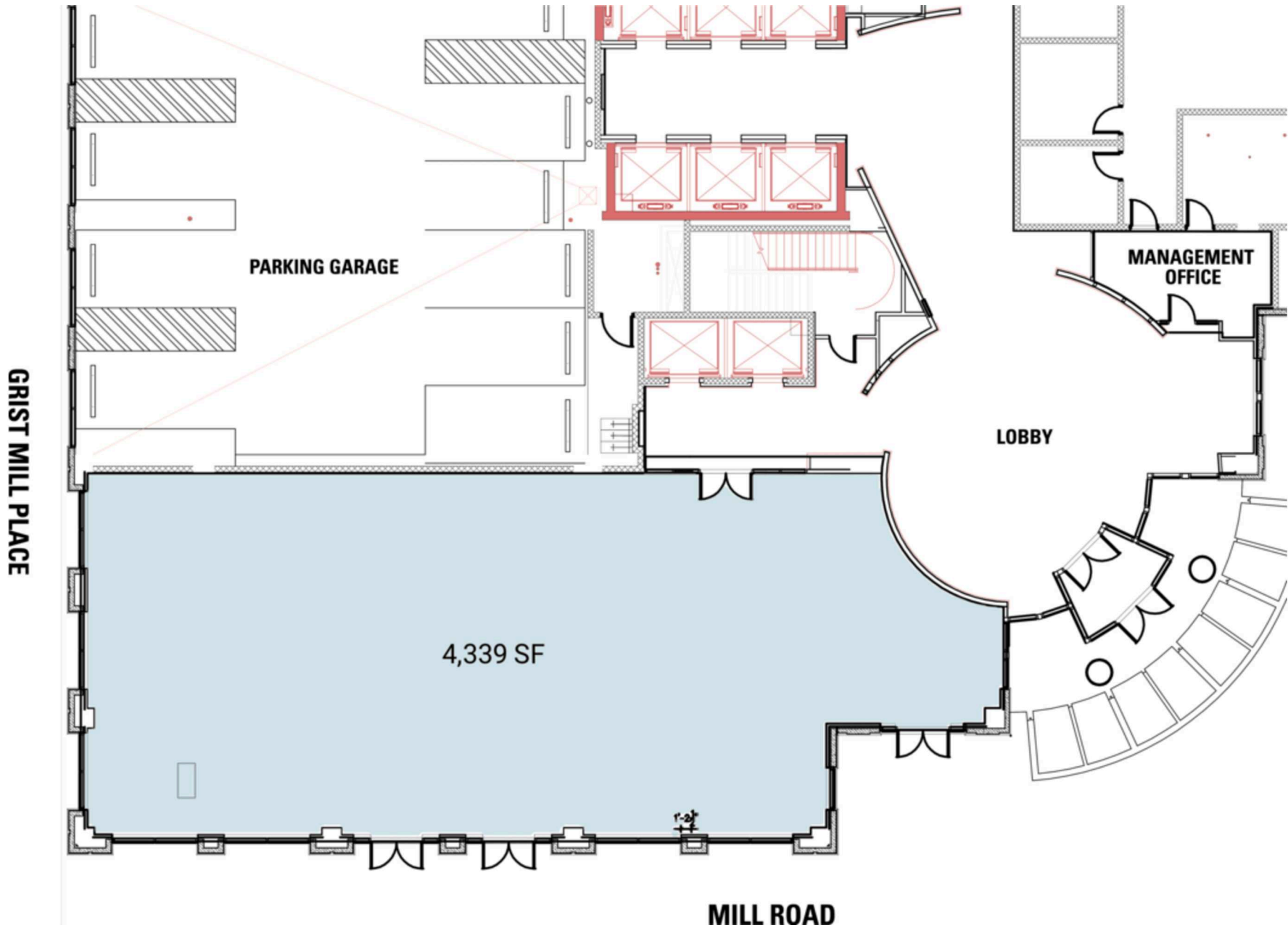
	1 MILE	3 MILES	5 MILES
 POPULATION	28,205	163,158	491,176
 DAYTIME POPULATION	25,441	93,288	207,350
 HOUSEHOLD INCOME	\$148,252	\$148,692	\$121,025
 TRAFFIC COUNTS	17,000 on Eisenhower Ave		

CO-TENANTS

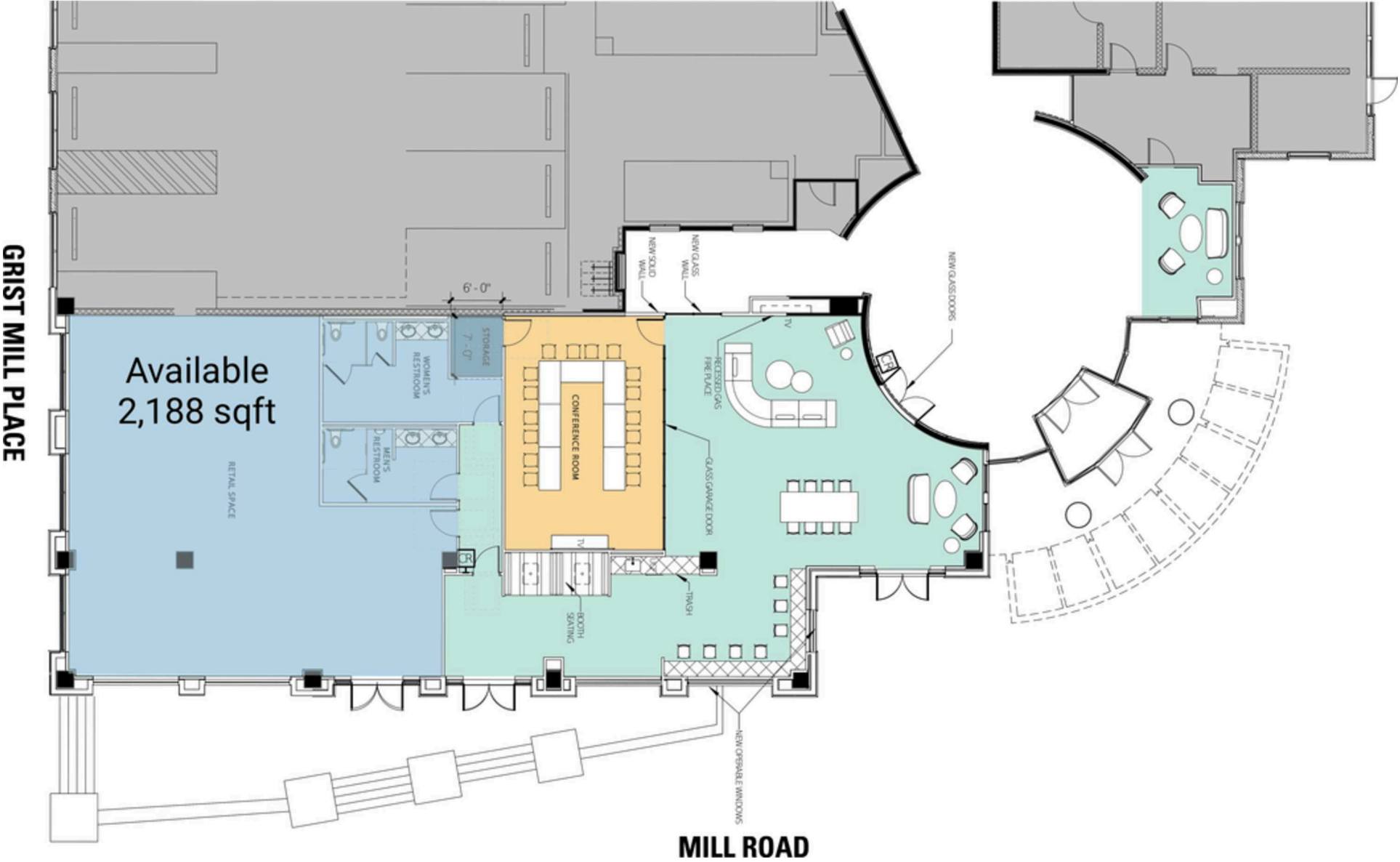


SITE PLAN

CARLYLE OVERLOOK | ALEXANDRIA, VA



DEMISING OPTION
CARLYLE OVERLOOK | ALEXANDRIA, VA
2,188 SF AVAILABLE



**CARLYLE
OVERLOOK**
ALEXANDRIA, VA



RAPPAPORT

CARLYLE OVERLOOK | 2318 MILL RD, ALEXANDRIA, VA

Melissa Webb | mwebb@rappaportco.com | 571.382.1227

Michael Leon | mleon@rappaportco.com | 571.382.1205

rappaportco.com