

# 2121 K STREET

WASHINGTON, DC

3,933 SF AVAILABLE

## RAPPAPORT




2121 K STREET  
N.W.

GW Inno Center

25

**BOBBY'S  
BURGER  
PALACE**





 **Congressional Bank**



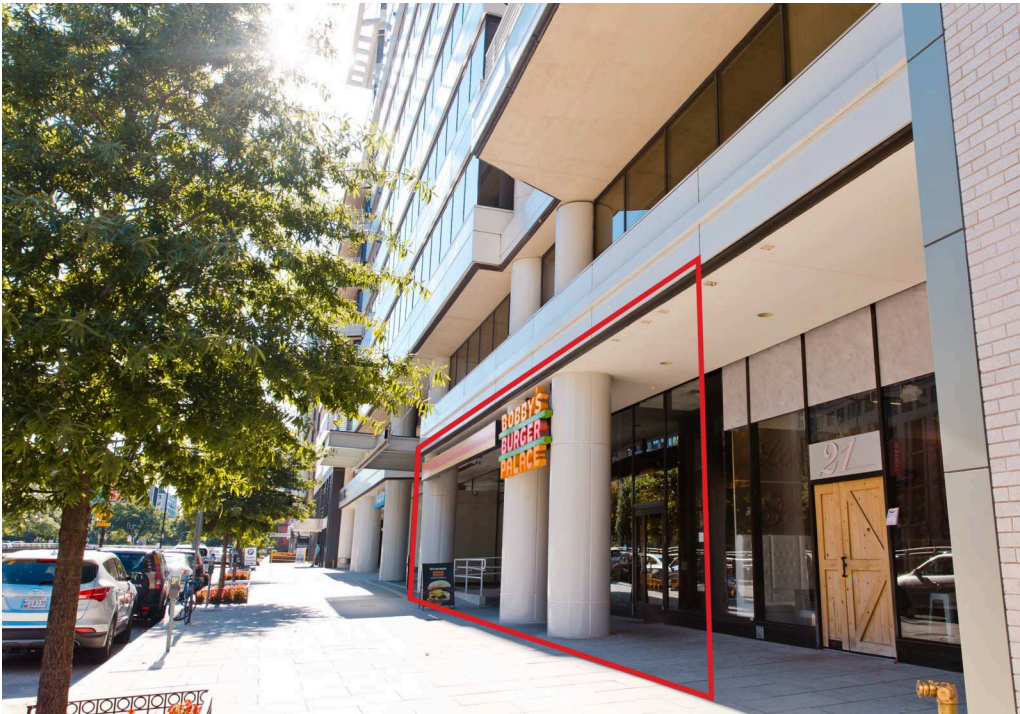
2121 K STREET  
WASHINGTON, DC

With a lofty 52 feet of frontage on bustling K Street, 2121 K Street NW squarely sits in the heart of Washington, D.C.’s Central Business District. The street-front retail enjoys impeccable walkability for major public- and private-sector employees, students and faculty of The George Washington University and Hospital, as well as two key Metro stations, Farragut West and Foggy Bottom-GWU (Blue, Orange, and Silver). Nestled in the high-income, highly educated city center of the district, 2121 K Street NW embodies urban convenience, access and affluence.

DEMOGRAPHICS 2024

	.25 MILE	.5 MILE	1 MILE
 POPULATION	3,461	22,095	54,596
 DAYTIME POPULATION	52,354	157,437	363,395
 HOUSEHOLD INCOME	\$94,074	\$125,240	\$154,452
 TRAFFIC COUNTS	31,200 on K Street NW Walk Score of 98 out of 100		

CO-TENANTS

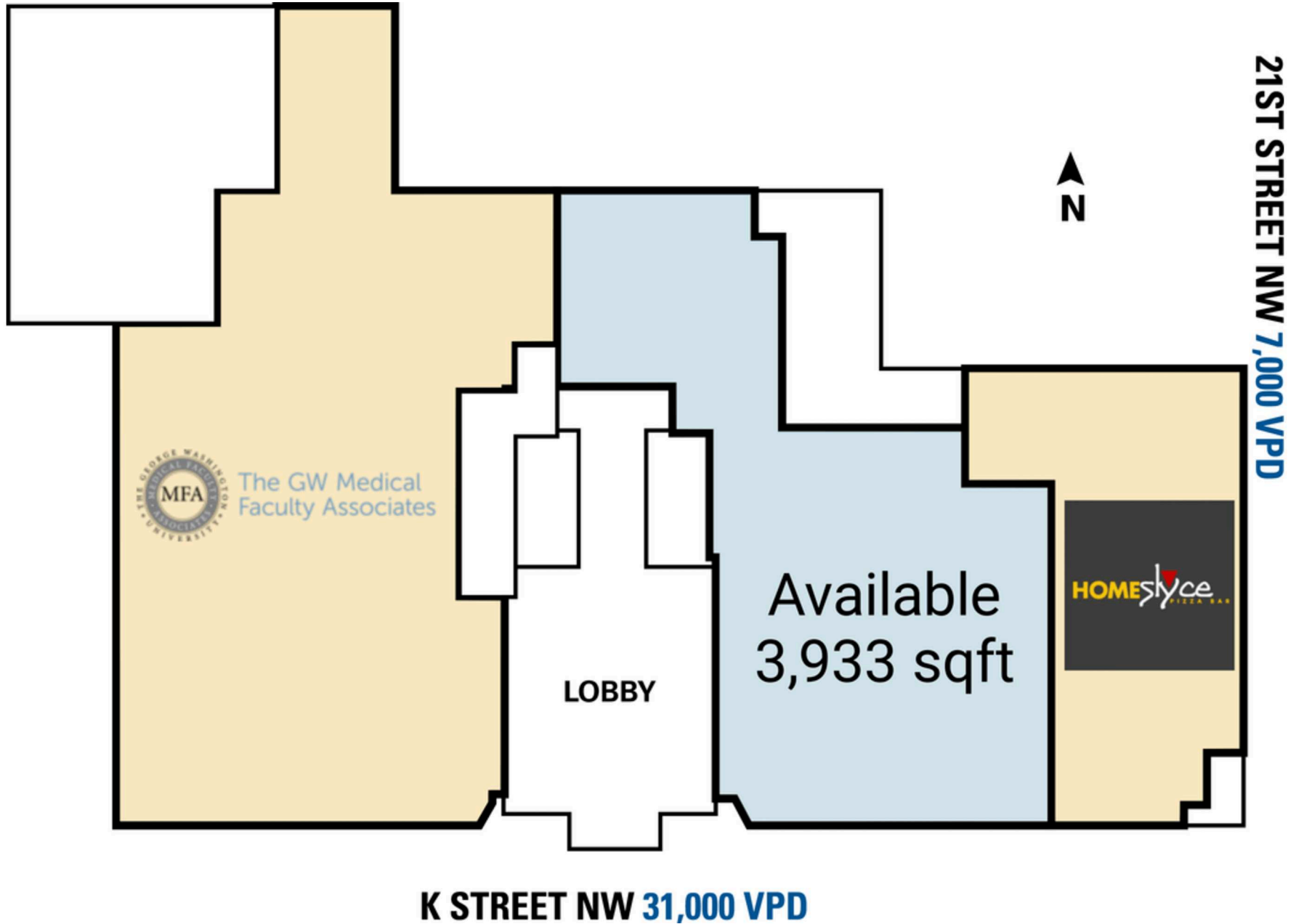




## SITE PLAN

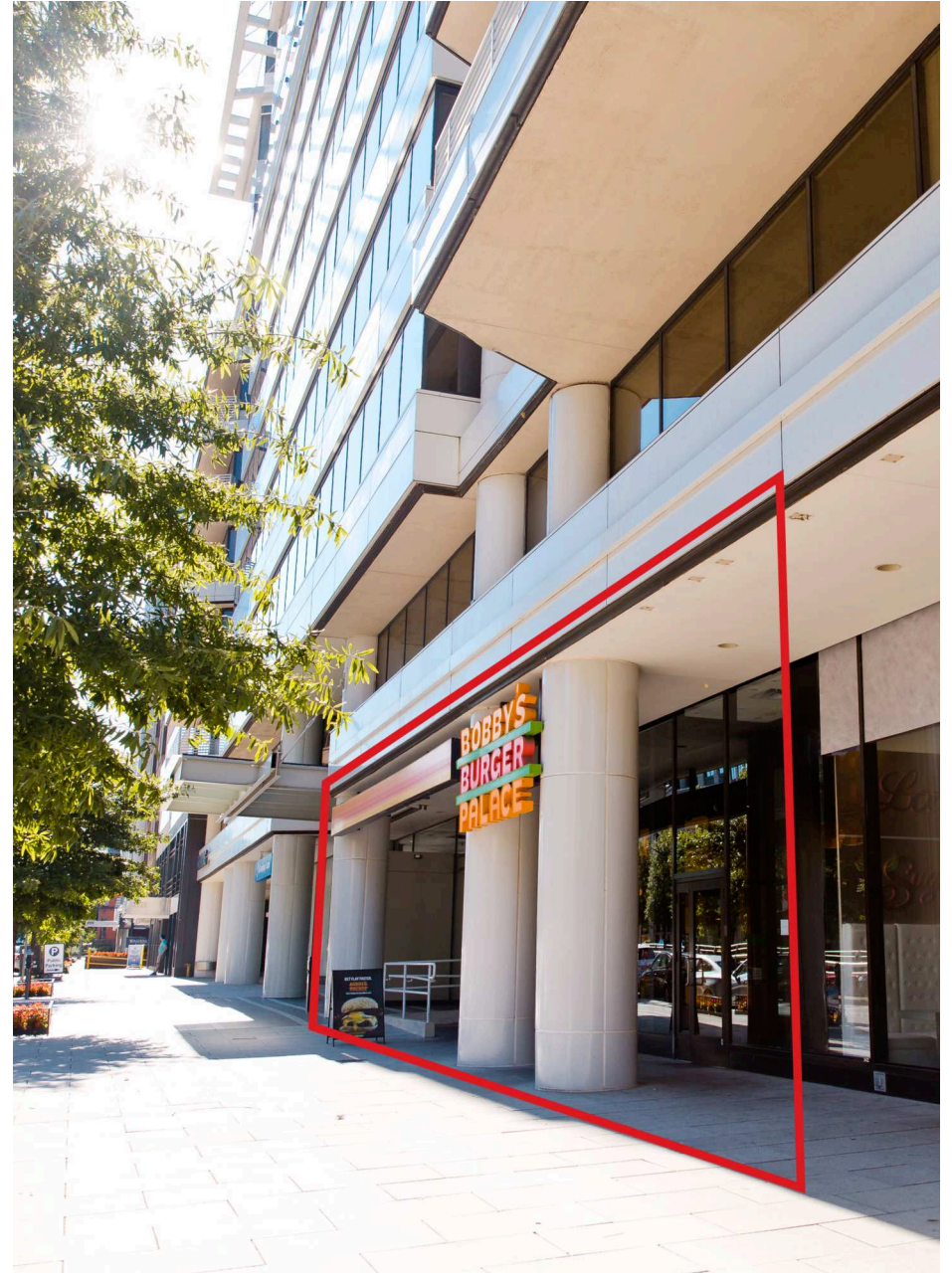
2121 K STREET | WASHINGTON, DC

3,933 SF AVAILABLE





**2121 K STREET**  
WASHINGTON, DC



# RAPPAPORT

**2121 K STREET | 2121 K ST NW, WASHINGTON, DC**

**Michael Howard | [mhoward@rappaportco.com](mailto:mhoward@rappaportco.com) | 571.382.1219**

**Melissa Webb | [mwebb@rappaportco.com](mailto:mwebb@rappaportco.com) | 571.382.1227**

**Bill Dickinson | [bdickinson@rappaportco.com](mailto:bdickinson@rappaportco.com) | 703.310.6983**

**[rappaportco.com](http://rappaportco.com)**