

CARLYLE CENTER

ALEXANDRIA, VA

4,542 SF AVAILABLE

RAPPAPORT







CARLYLE CENTER

ALEXANDRIA, VA

Carlyle Center is located in the heart of the Carlyle development. The Carlyle neighborhood features more than 7.8 million square feet of office space, 15,255 daytime employees, 3,900 residential units and 1,500+ hotel rooms in the immediate trade area Adjacent to several major office tenants, including US Patent and Trademark Office, Federal District Courthouse, Thomson Reuters, GW Masters Program and Learning Tree.

DEMOGRAPHICS 2024

		.5 MILE	1 MILE	2 MILES
	POPULATION	8,315	31,159	79,499
	DAYTIME POPULATION	15,255	31,928	66,153
	HOUSEHOLD INCOME	\$145,071	\$144,277	\$153,379
	TRAFFIC COUNTS	23,000 on Duke Street		

CO-TENANTS



WILLIAM LEWIS CENTER
ALEXANDRIA, VA



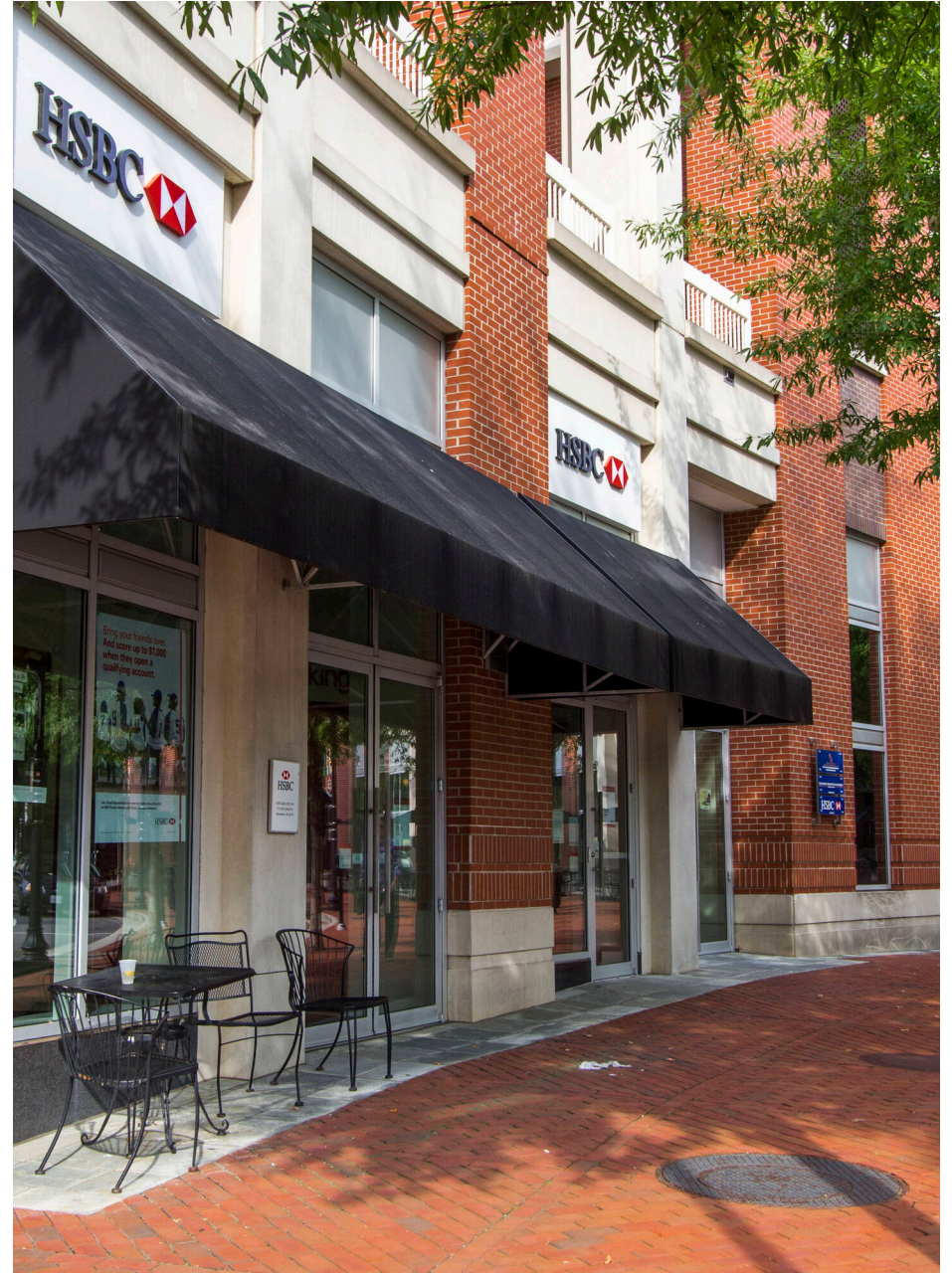
SITE PLAN

CARLYLE CENTER | ALEXANDRIA, VA

4,542 SF AVAILABLE



CARLYLE CENTER
ALEXANDRIA, VA



RAPPAPORT

CARLYLE CENTER | 1925 BALLENGER AVE, ALEXANDRIA, VA

Bill Dickinson | bdickinson@rappaportco.com | 703.310.6983

Melissa Webb | mwebb@rappaportco.com | 571.382.1227

Michael Howard | mhoward@rappaportco.com | 571.382.1219

rappaportco.com