

128 N PITT STREET
ALEXANDRIA, VA





RAPPAPORT



128 N PITT STREET
ALEXANDRIA, VA

A retail space in the heart of Old Town Alexandria just one block away from Alexandria City Hall and surrounded by numerous coffee shops, retail shopping, and fast casual dining options. Located in an area with a 97 Walk Score and a short distance from the Alexandria Train Station and King Street Metro Station, this is an ideal space in terms of accessibility and visibility. Situated only four blocks from the bustling Alexandria Waterfront with the Alexandria Ferry Station, Waterfront Park, and the popular Torpedo Factory Art Center.

DEMOGRAPHICS 2024

	0.5 MILE	1 MILE	2 MILES
 POPULATION	10,148	29,069	66,585
 DAYTIME POPULATION	20,635	46,767	73,380
 HOUSEHOLD INCOME	\$176,800	\$165,163	\$164,596
 TRAFFIC COUNTS	29,975 on N Washington St		

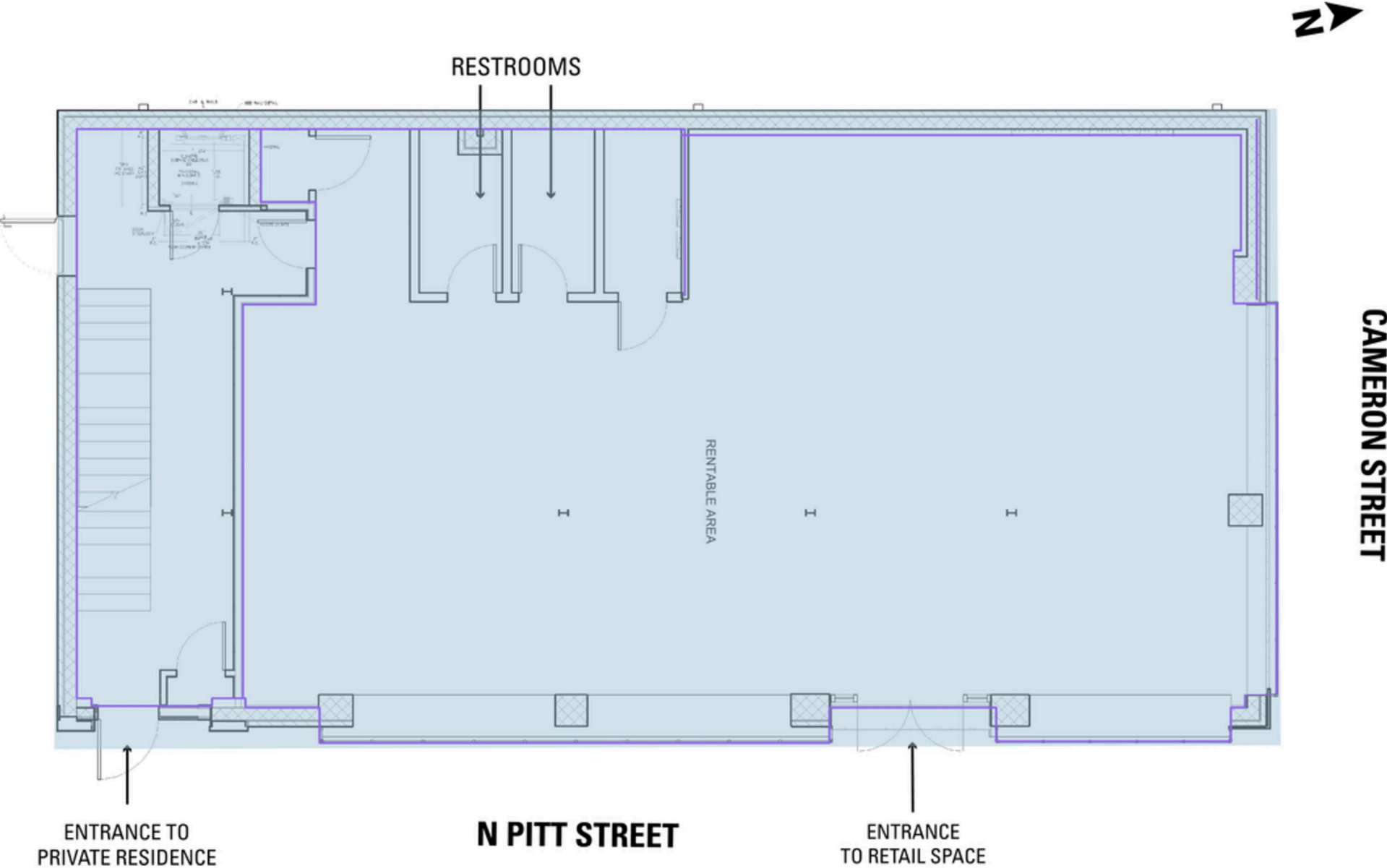
AREA RETAILERS



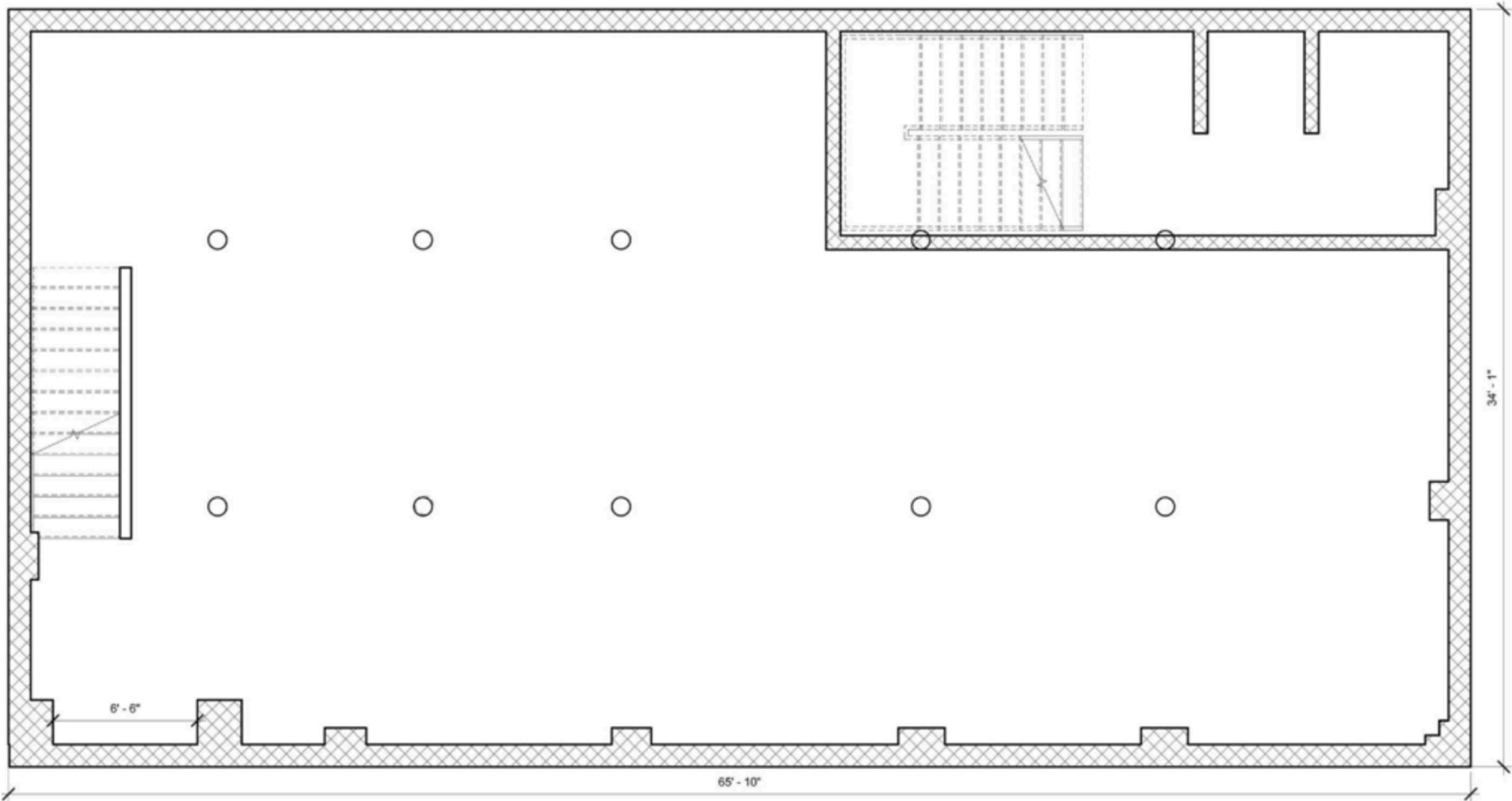
128 N PITT STREET
ALEXANDRIA, VA



SITE PLAN - GROUND LEVEL
128 N PITT STREET | ALEXANDRIA, VA



SITE PLAN - BASEMENT LEVEL
128 N PITT STREET | ALEXANDRIA, VA



CAMERON STREET

N PITT STREET

128 N PITT STREET
ALEXANDRIA, VA



RAPPAPORT

128 N PITT STREET | 128 N PITT STREET, ALEXANDRIA, VA

Melissa Webb | mwebb@rappaportco.com | 571.382.1227

rappaportco.com