

1829 14TH STREET NW
WASHINGTON, DC

RAPPAPORT



T STREET NW

14TH STREET NW 20,700 VPD







CONFIDENTIAL LISTING
DO NOT DISTURB EXISTING TENANT

1829 14TH STREET NW WASHINGTON, DC

Immersed in the popular shopping district of 14th Street, this 2,780-square-foot restaurant space offers incredible visibility to shoppers, residents, tourists and professionals at all hours of the day. With an included 2,200-square-foot basement, 1829 14th Street Northwest is fully built out for a restaurant or retailer to take possession and captivate this bustling urban neighborhood with sought-after retailers such as West Elm, Madewell, Whole Foods and more.

DEMOGRAPHICS 2024

	.25 MILE	.50 MILE	.75 MILE
 POPULATION	6,979	30,672	71,092
 DAYTIME POPULATION	4,496	13,768	50,275
 HOUSEHOLD INCOME	\$162,171	\$155,794	\$137,819
 TRAFFIC COUNTS	20,700 on 14th Street		

AREA RETAILERS





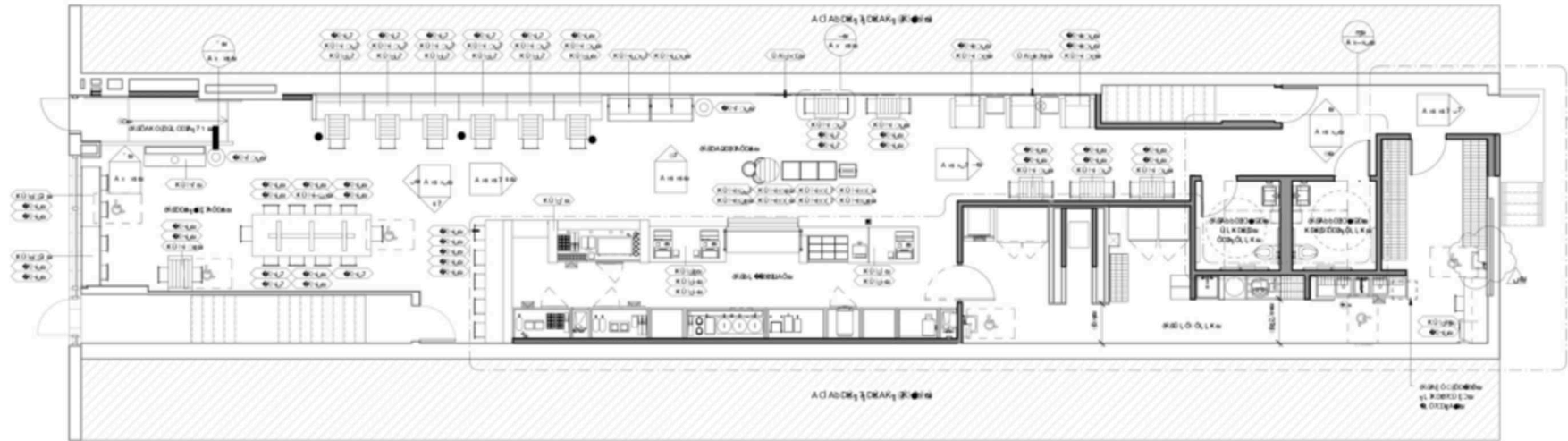




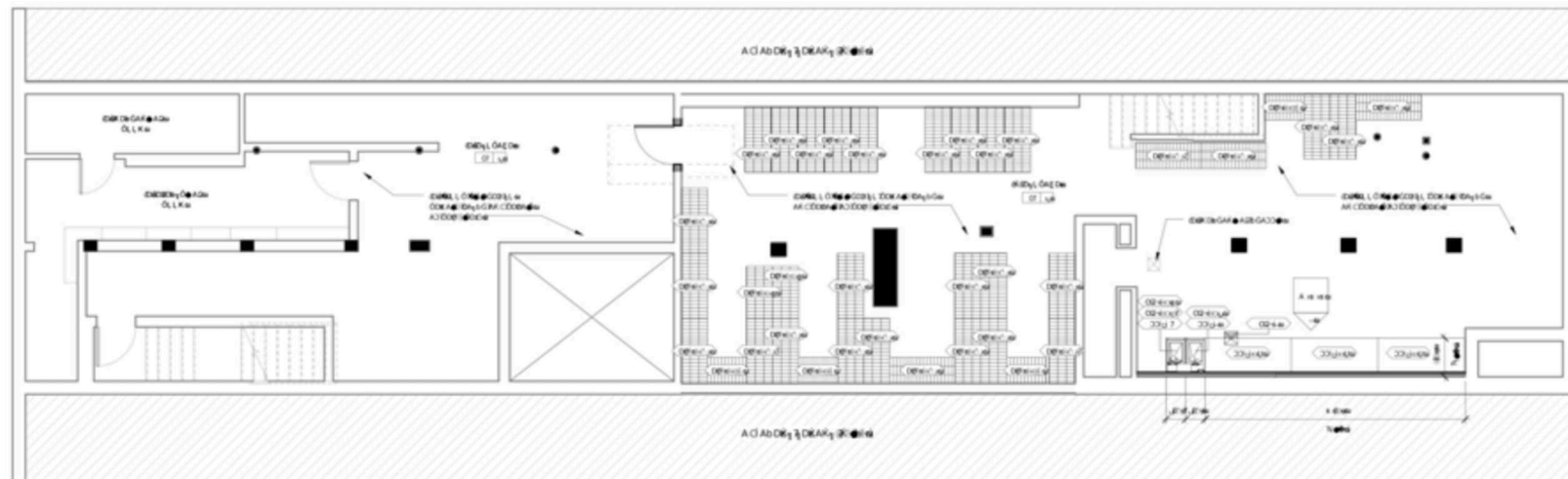
1829 14TH STREET NW | WASHINGTON, DC

1829 14TH STREET NW | WASHINGTON, DC

FIRST FLOOR - 2,780 SF



BASEMENT - 2,200 SF



1829 14TH STREET NW
WASHINGTON, DC



RAPPAPORT

1829 14TH STREET NW | 1829 14TH STREET NW, WASHINGTON, DC

Patrick O'Meara | pomeara@rappaportco.com | 571.382.1218

Bill Dickinson | bdickinson@rappaportco.com | 703.310.6983

rappaportco.com