

2 M STREET NE

WASHINGTON, DC
4,100 SF AVAILABLE







RAPPAPORT



2 M STREET NE WASHINGTON, DC

Positioned in the thriving NoMA neighborhood, this 4,100-square-foot retail opportunity offers easy metro access and impeccable visibility to the tourists, residents and professionals of this D.C. submarket. With a dense daytime population and high pedestrian traffic passing by, the 2M Street project comprises 389,000 square feet within a 12-story super structure and 314 residential units towering above.

DEMOGRAPHICS 2024

	1 MILE	3 MILES	5 MILES
<div>  <div>POPULATION</div> </div>	67,885	376,287	789,157
<div>  <div>DAYTIME POPULATION</div> </div>	146,306	894,465	1,333,106
<div>  <div>HOUSEHOLD INCOME</div> </div>	\$124,124	\$123,787	\$115,815
<div>  <div>TRAFFIC COUNTS</div> </div>	55,300 on New York Avenue		

CO-TENANTS



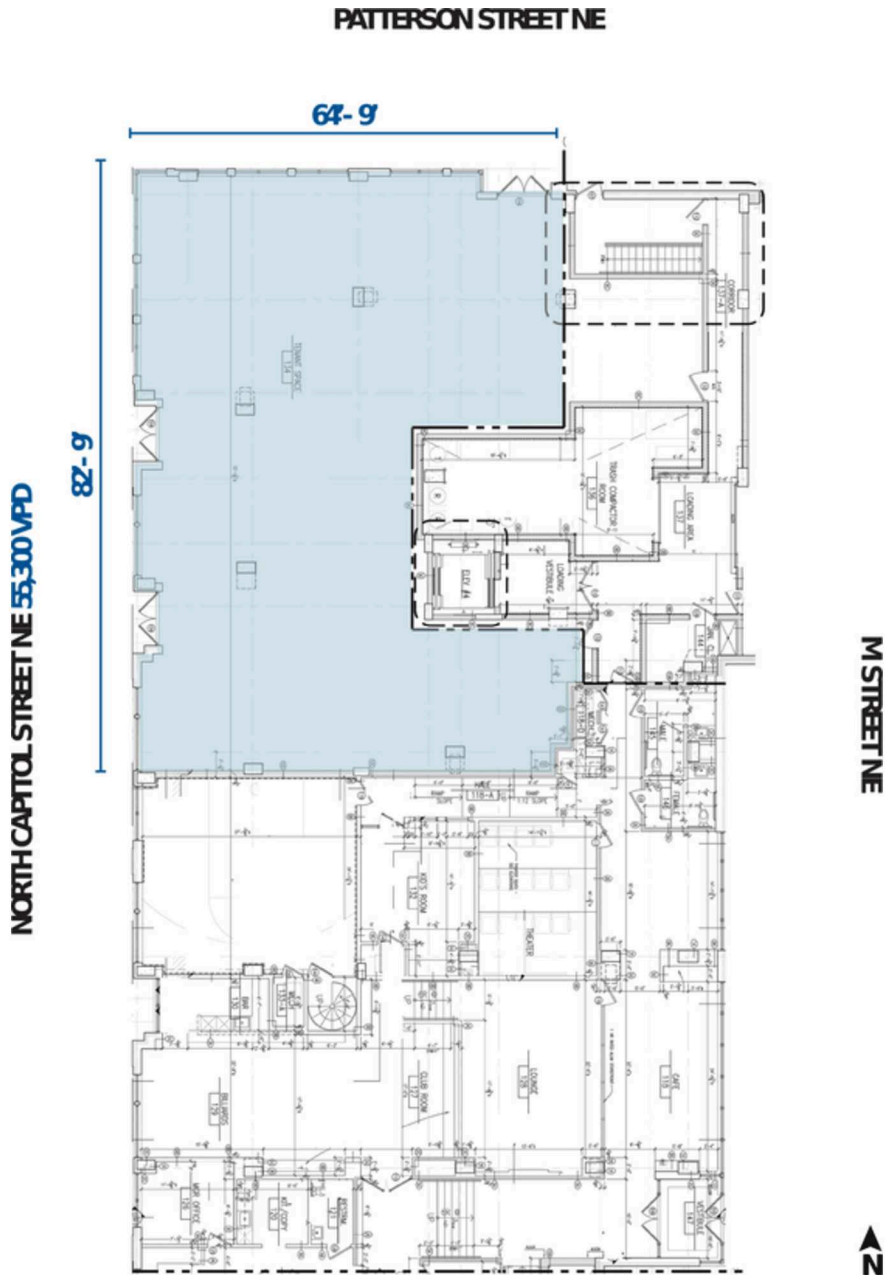
WASHINGTON, DC



SITE PLAN

2 M STREET NE | WASHINGTON, DC

4,100 SF AVAILABLE



2 M STREET NE
WASHINGTON, DC



RAPPAPORT

2 M STREET NE | 2 M STREET NE, WASHINGTON, DC

Bill Dickinson | bdickinson@rappaportco.com | 703.310.6983

Kyle Gamber | kgamber@rappaportco.com | 571.382.1216

rappaportco.com