



RAIPAPORT





FREDERICKSBURG, VA
0 - 0 SF AVAILABLE

CENTRAL PARK CORPORATE CENTER

FREDERICKSBURG, VA

Located at I-95 and Route 3 in Fredericksburg, Virginia, Central Park Corporate Center offers more than 227,444 square-feet of professional office space. Central Park Corporate Center is a well-established address for a variety of business users, including corporate executive offices, government contractors and agencies, medical providers and national insurance and lending establishments. With work and play amenities within walking distance and over 50 restaurants in Central Park, Corporate Center is the best location in Fredericksburg for today's professional.

DEMOGRAPHICS 2024

5 MILES		
	POPULATION	113,167
	DAYTIME POPULATION	61,285
	HOUSEHOLD INCOME	\$85,136
	TRAFFIC COUNTS	80,000 on Central Park Blvd at Route 3

CO-TENANTS

BUILDING 4 PROFESSIONAL SITE PLAN
CENTRAL PARK CORPORATE CENTER | FREDERICKSBURG, VA



GROUND FLOOR SITE PLAN
CENTRAL PARK CORPORATE CENTER | FREDERICKSBURG, VA



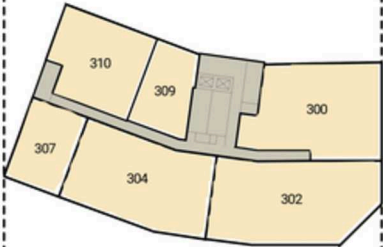
UPPER FLOOR SITE PLAN
CENTRAL PARK CORPORATE CENTER | FREDERICKSBURG, VA



FOURTH LEVEL PLAN



THIRD LEVEL PLAN



SECOND LEVEL PLAN



CENTRAL PARK CORPORATE CENTER
FREDERICKSBURG, VA

RAPPAPORT

CENTRAL PARK CORPORATE CENTER | 1320 CENTRAL PARK BLVD, FREDERICKSBURG, VA

Susan Bourgeois | sbourgeois@rappaportco.com | 571.382.1288

rappaportco.com