

# CODA ON H

WASHINGTON, DC

RAPPAPORT








**CODA ON H**  
**WASHINGTON, DC**

Coda on H is a lifestyle-centered mixed-use community in the heart of Washington, D.C.’s H Street Corridor. This contemporary, yet welcoming, 112-unit residential property benefits from two nationally recognized grocers, Giant Food and Whole Foods, a thriving arts and culture scene, close proximity to Union Market and ease of access to D.C.’s busiest intermodal transportation center, Union Station. Residents, professionals and tourists are flocking to this bustling and artsy neighborhood undergoing a renaissance of sorts, hoping to catch a show at the historic Atlas performing arts center, experience the energy at the popular annual H Street Festival, or discover the exhilarating nightlife arising in the area. The street-front retail opportunities provide ample flexibility and divisible square footages for retailers to design the space they desire.

**DEMOGRAPHICS 2024**

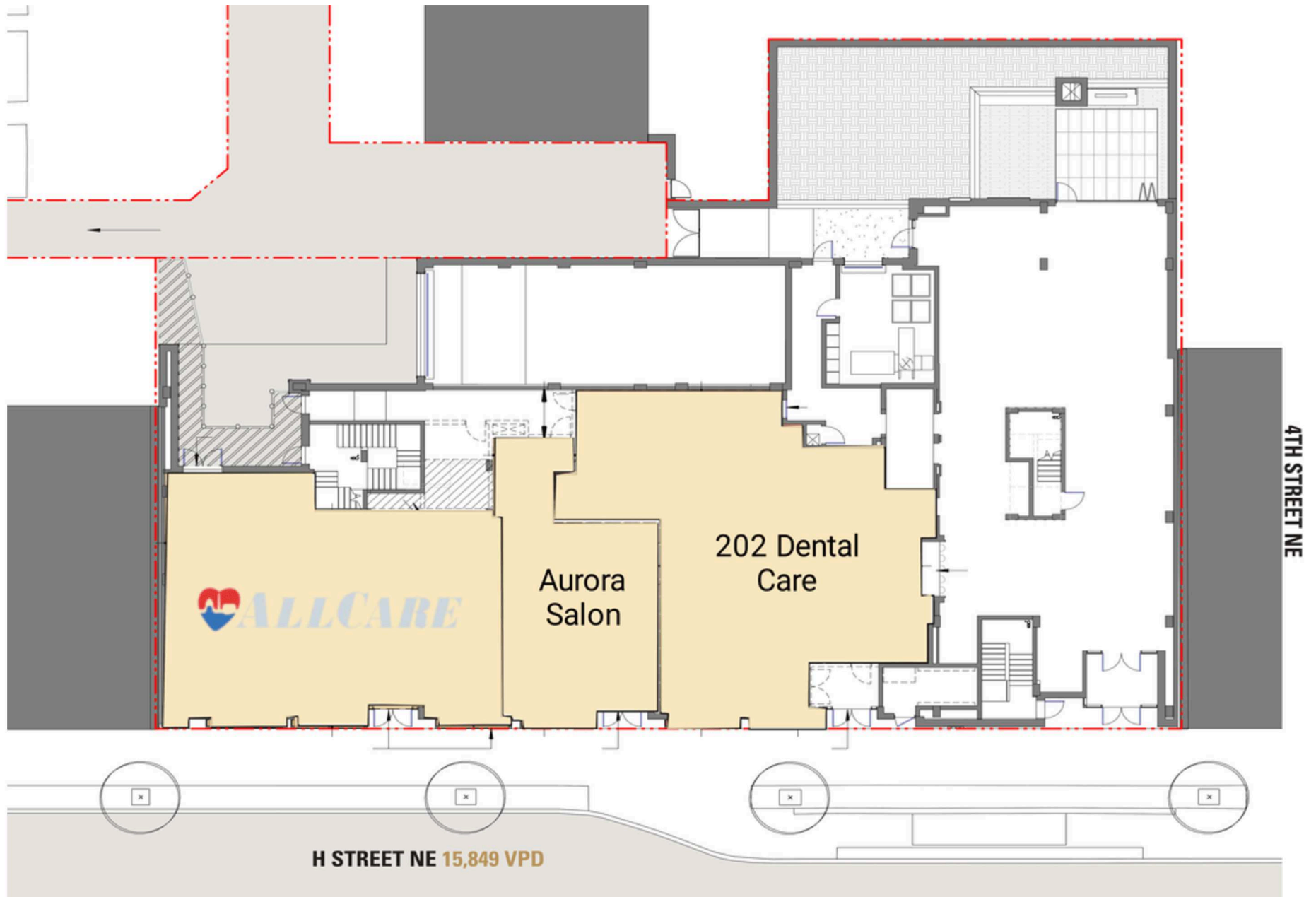
	.25 MILE	.5 MILE	1 MILE
 <b>POPULATION</b>	2,713	8,614	38,288
 <b>DAYTIME POPULATION</b>	5,735	43,532	122,790
 <b>HOUSEHOLD INCOME</b>	\$120,539	\$111,151	\$96,011





## SITE PLAN

CODA ON H | WASHINGTON, DC





**CODA ON H**  
WASHINGTON, DC



# RAPPAPORT

**CODA ON H | 315 H STREET NE , WASHINGTON, DC**

**Jim Farrell | [jfarrell@rappaportco.com](mailto:jfarrell@rappaportco.com) | 571.382.1229**

**Zach Elcano | [zelcano@rappaportco.com](mailto:zelcano@rappaportco.com) | 571.382.1228**

**[rappaportco.com](http://rappaportco.com)**