

3534 EAST CAPITOL NE

WASHINGTON, DC







RAPPAPORT



3534 EAST CAPITOL NE
WASHINGTON, DC

Slated for delivery in July 2019, 3534 East Capitol NE brings 137 multi-family units to a thriving neighborhood with several new and forthcoming mixed-use developments. Within half a mile of the Minnesota Avenue and Benning Road Metro stations, this retail opportunity meets the service needs of a high-density residential area with easy access to over 14,000 VPD along East Capitol Street. Nearby retailers include CVS, Safeway, and Dollar Tree.

DEMOGRAPHICS 2024

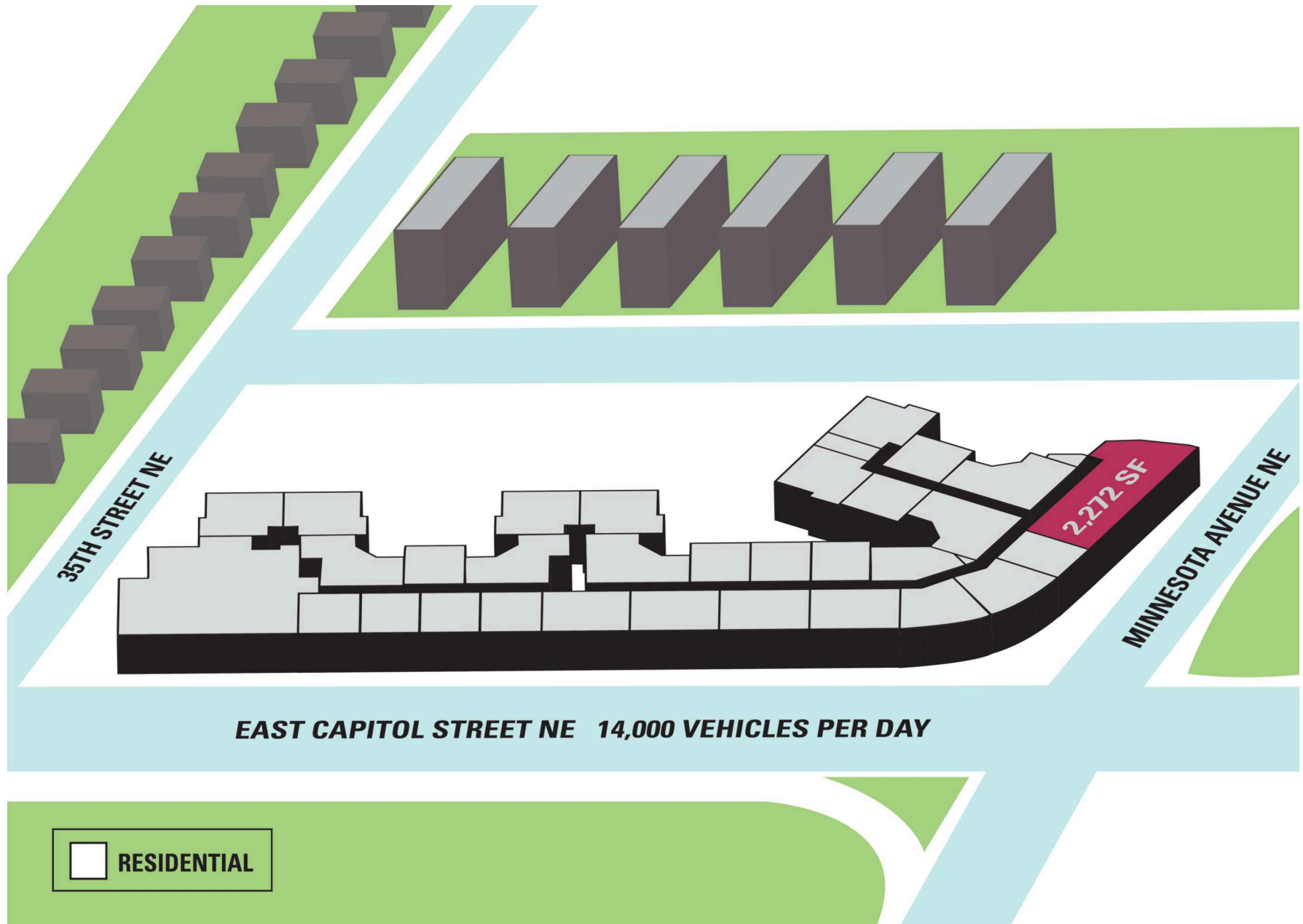
	.5 MILE	1 MILE	2 MILES
 POPULATION	10,306	23,026	120,859
 DAYTIME POPULATION	1,845	6,318	24,219
 HOUSEHOLD INCOME	\$49,707	\$51,269	\$72,180
 TRAFFIC COUNTS	14,000 on East Capitol Street NE		

AREA RETAILERS

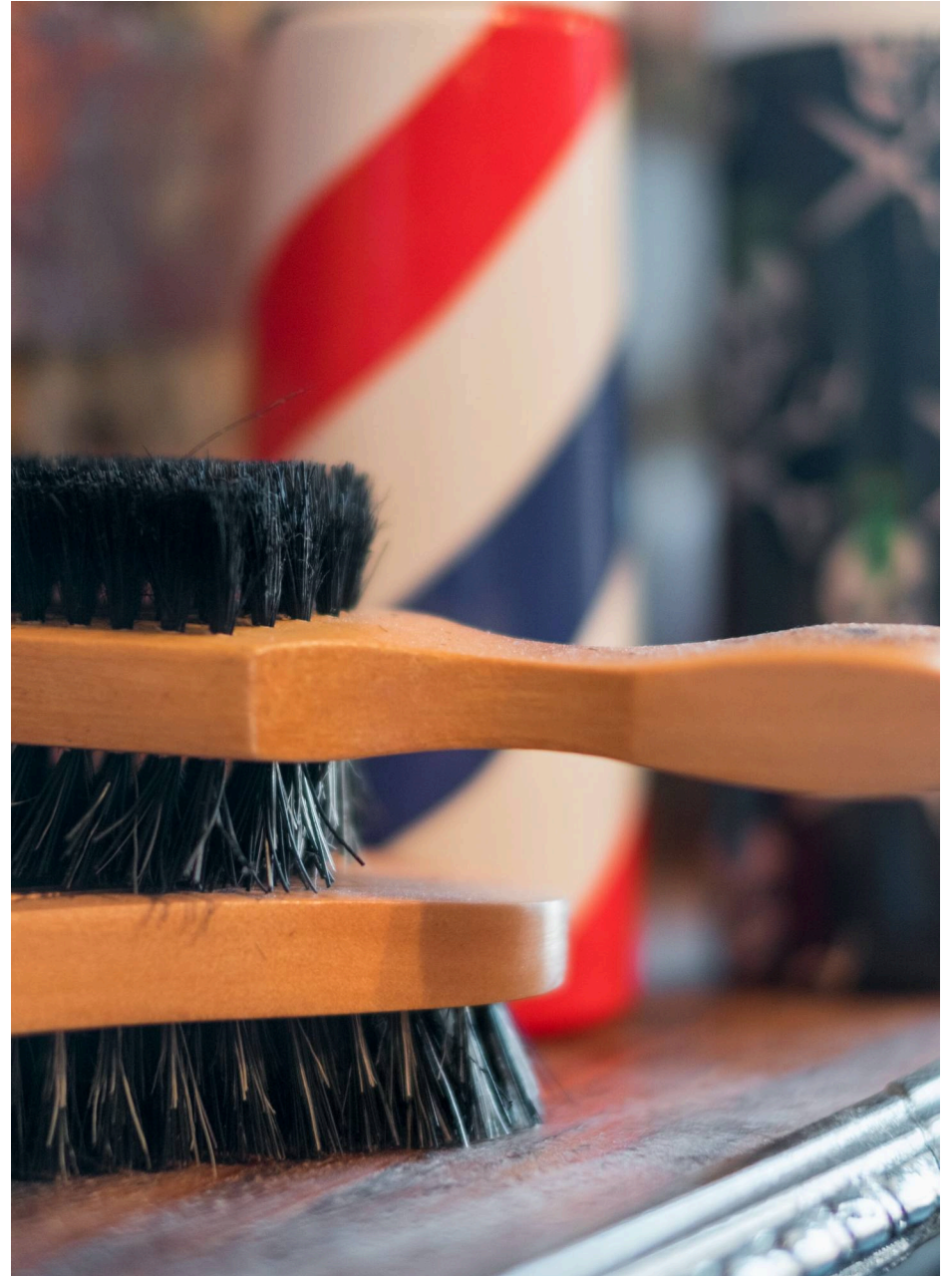
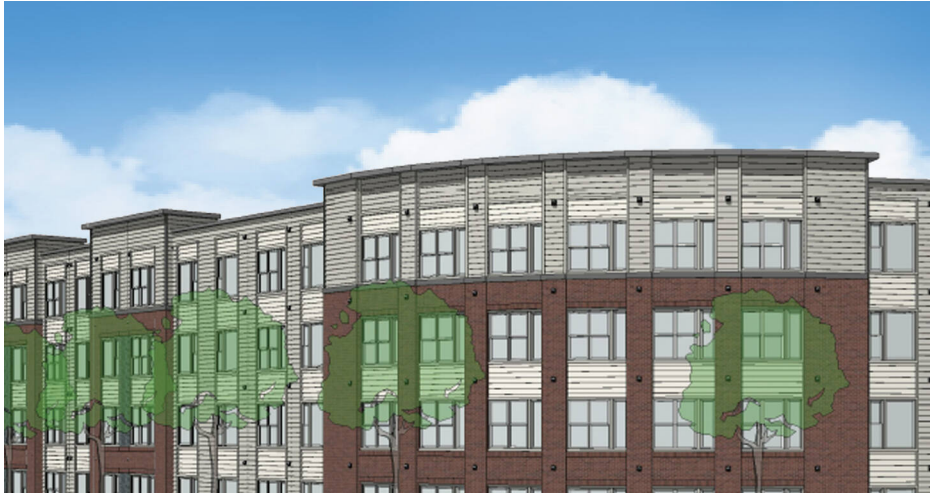


SITE PLAN

3534 EAST CAPITOL NE | WASHINGTON, DC



3534 EAST CAPITOL NE
WASHINGTON, DC



RAPPAPORT

3534 EAST CAPITOL NE | 3534 EAST CAPITOL STREET NE, WASHINGTON, DC

Zach Elcano | zelcano@rappaportco.com | 571.382.1228

rappaportco.com