

UNION PLACE

WASHINGTON, DC
6,952 SF AVAILABLE





RAPPAPORT



UNION PLACE WASHINGTON, DC

Streetfront retail available in a new 525-unit apartment development in NoMa, adjacent to the H street corridor and just minutes away from Union Station, Union Market and the NoMa Gallaudet metro station. This location has a dedicated day care space with outdoor play area available as well as a vented restaurant opportunity with an amazing outdoor cafe space. There is over 8 million SF of office in surrounding NoMa and 14.8 Million SF of planned development immediately surrounding the project.

DEMOGRAPHICS 2024

	0.25 MILE	0.5 MILE	1 MILE
 POPULATION	5,864	18,301	64,516
 DAYTIME POPULATION	2,340	26,573	83,380
 HOUSEHOLD INCOME	\$144,042	\$120,748	\$122,150
 TRAFFIC COUNTS	14,000 on L Street NE		

AREA RETAILERS



SPACE PLAN

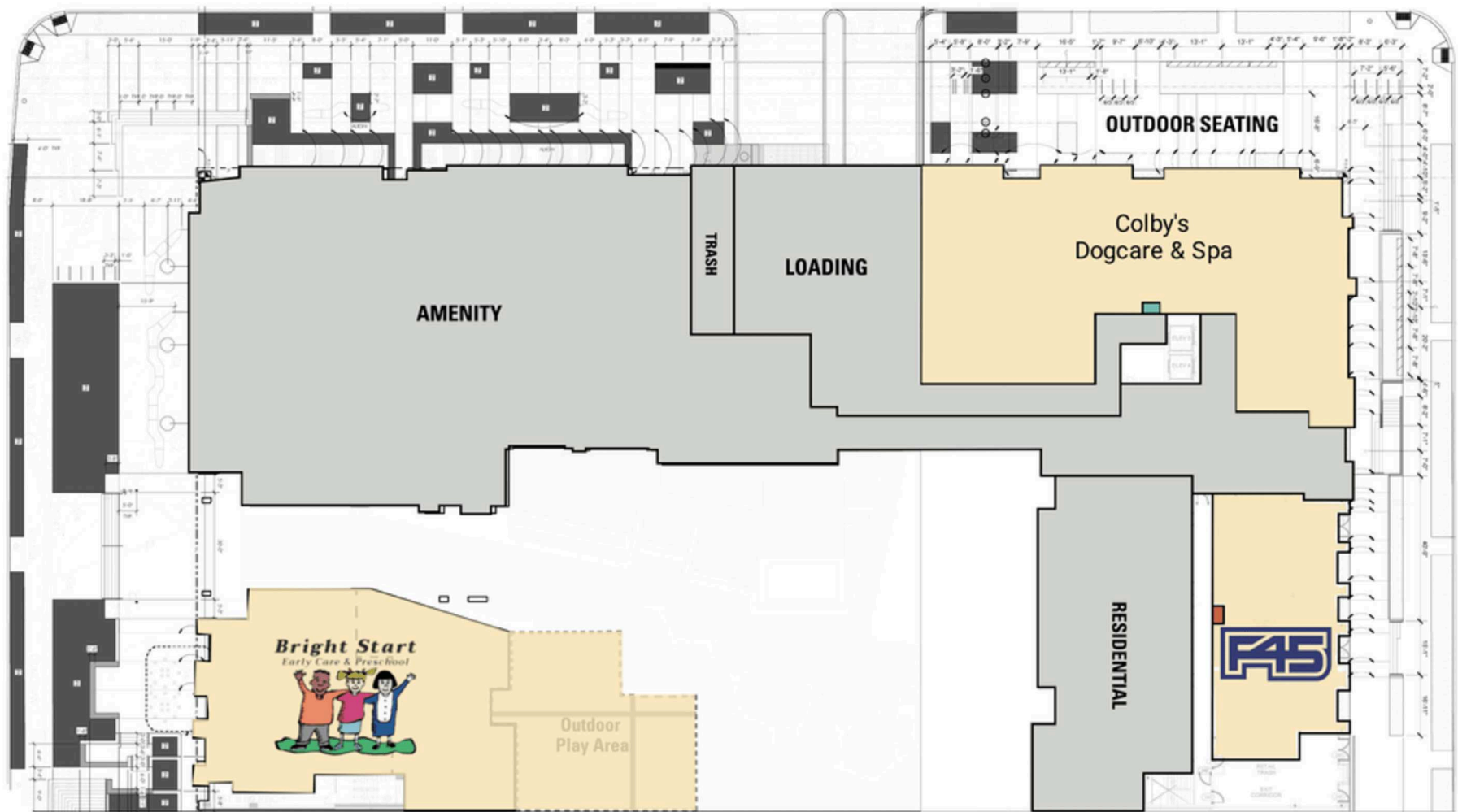
UNION PLACE | WASHINGTON, DC

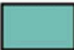

6,952 SF AVAILABLE

2ND STREET, NE

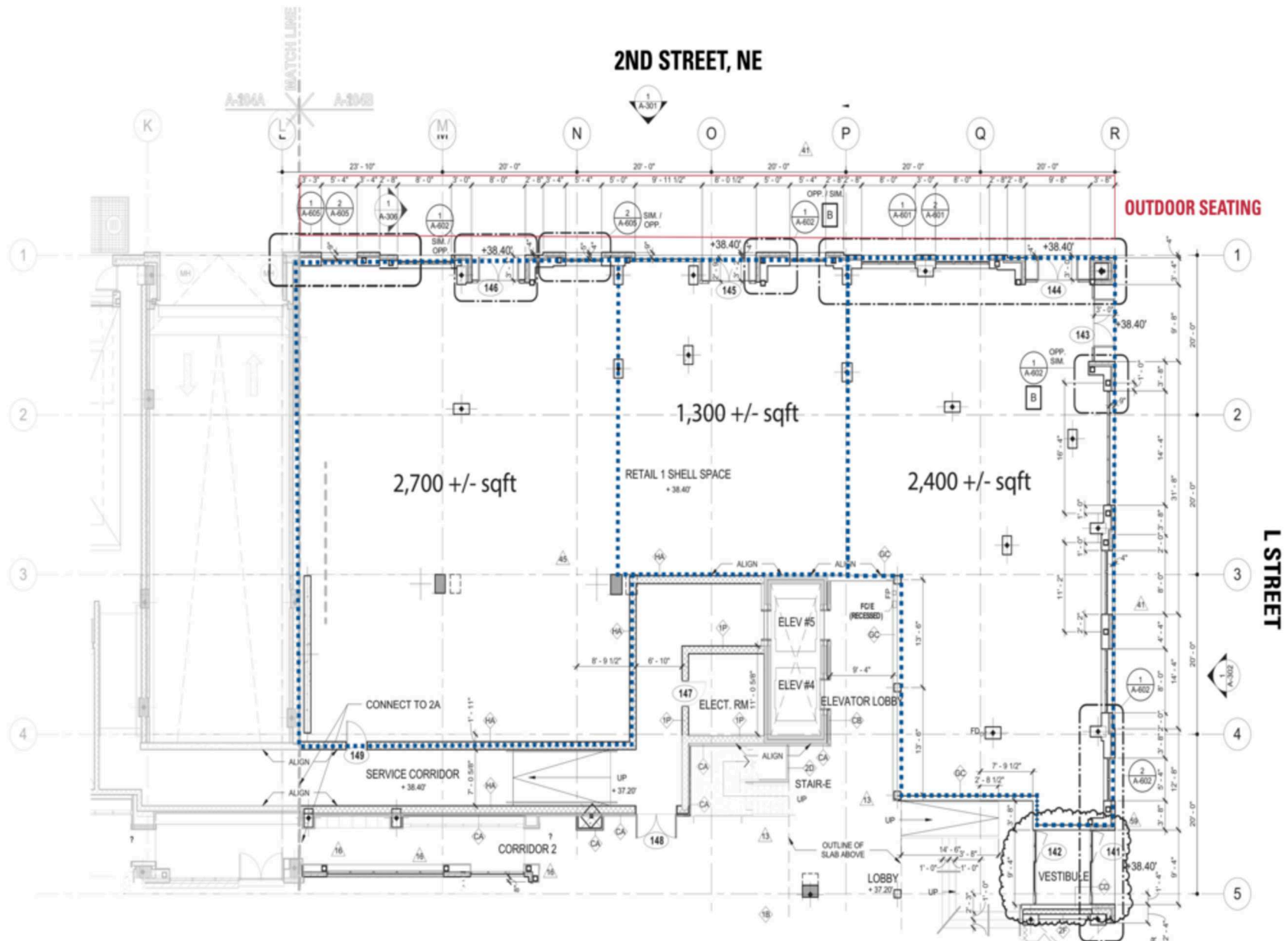
K STREET

L STREET



-  24" x 36" Exhaust Shaft
-  48" x 18" Exhaust Shaft

UNION PLACE | WASHINGTON, DC



UNION PLACE
WASHINGTON, DC



RAPPAPORT

UNION PLACE | 200 K ST NE, WASHINGTON, DC

Bill Dickinson | bdickinson@rappaportco.com | 703.310.6983

Jim Farrell | jfarrell@rappaportco.com | 571.382.1229

rappaportco.com