

ADAIRE

MCLEAN, VA
979,879 SF AVAILABLE





RAPPAPORT



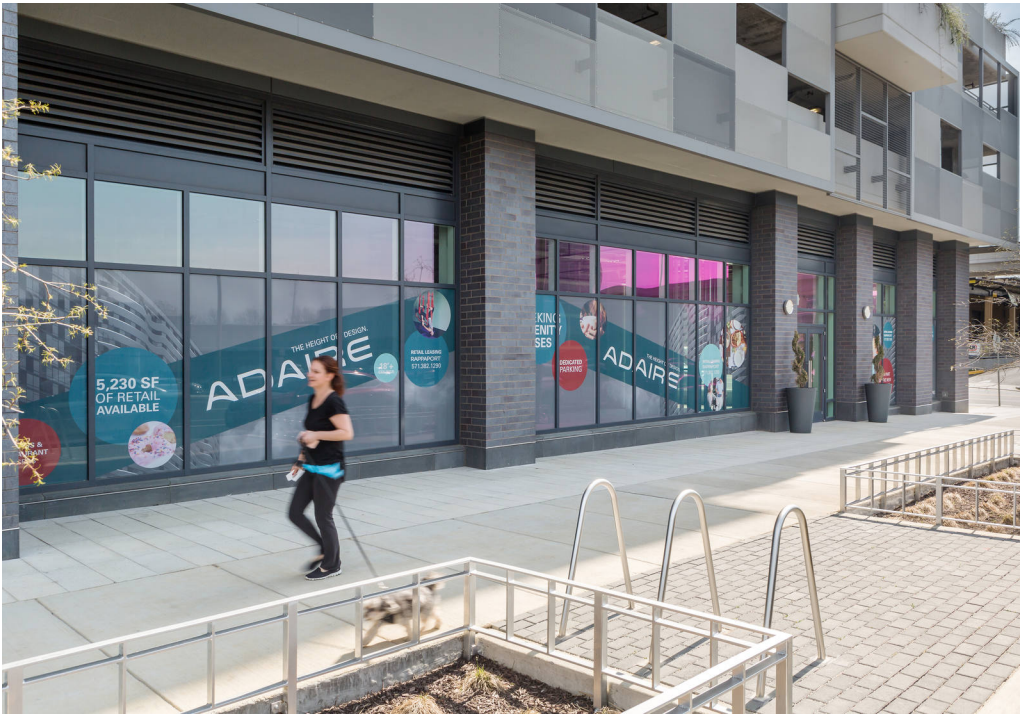
ADAIRE MCLEAN, VA

Space in 400-unit high-rise located in developing Tysons Corner, with one of the largest retail concentrations in the region. The project is one of the tallest residential buildings in greater Washington with 35 floors (27 floors of residential) The location is highly accessible along Route 7 and to the Spring Hill Metro. The Adaire is one of the first phases of the Spring Hill Station development which will feature 1.3 million SF of office, 200,000 SF of retail and 4.4 million SF of residential.

DEMOGRAPHICS 2024

	0.5 MILE	1 MILE
<div> <div>  </div> <div>POPULATION</div> </div>	5,035	11,955
<div> <div>  </div> <div>DAYTIME POPULATION</div> </div>	11,870	43,637
<div> <div>  </div> <div>HOUSEHOLD INCOME</div> </div>	\$115,925	\$11,955
<div> <div>  </div> <div>TRAFFIC COUNTS</div> </div>	65,062 on Route 7/Leesburg Pike	

AREA RETAILERS



LIVE ADAIRE.COM
GREYSTAR
ADAIRE
MCLEAN, VA



LIVE ADAIRE.COM

NOW LEASING
2018

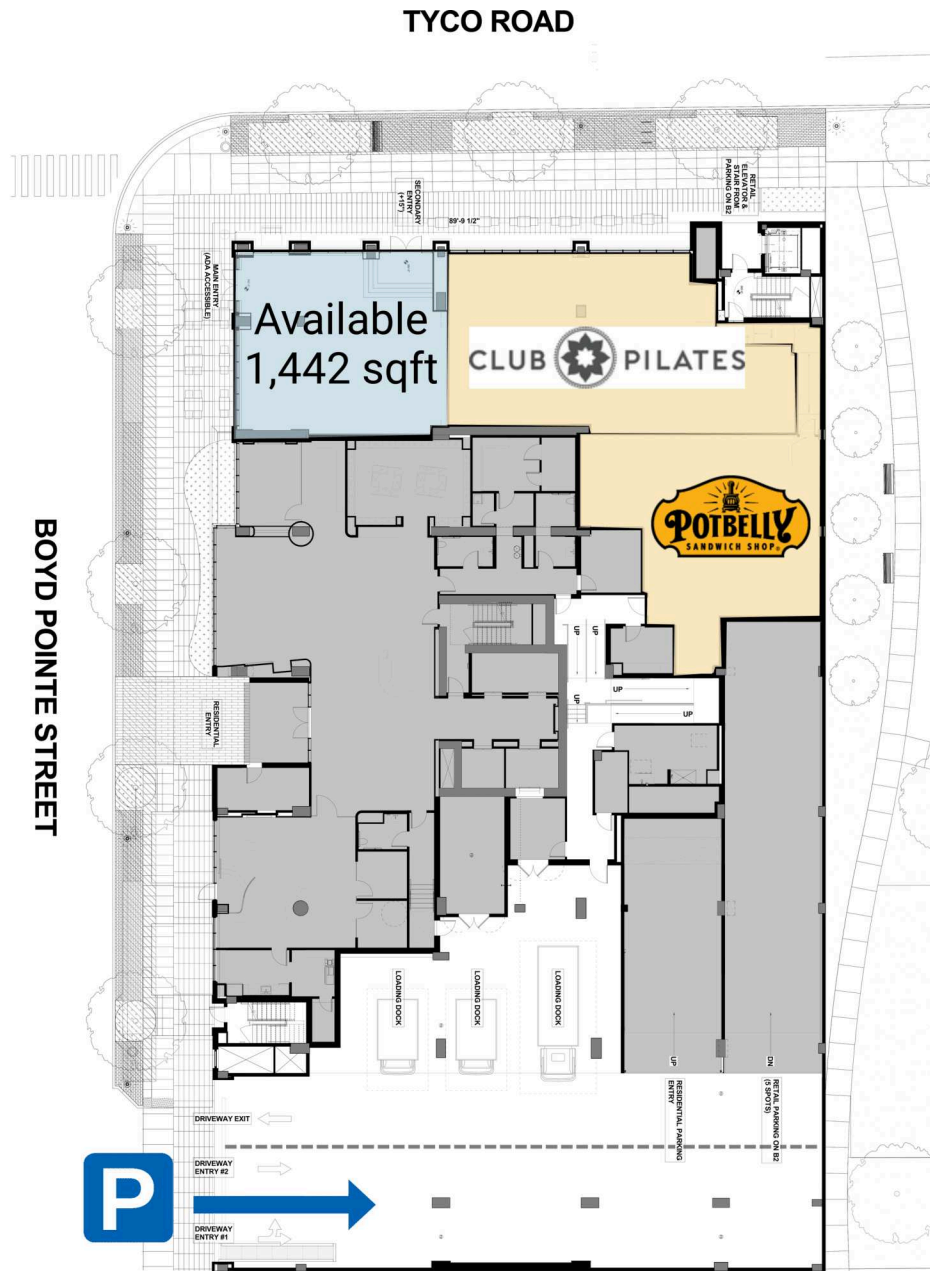
ADAIRE
5,230 SF AVAILABLE
RENTAL LEASING
HOURS: 971.580.1200
BE A PART
OF THE NEW
TYSONS

18+
FULLY
VENTED

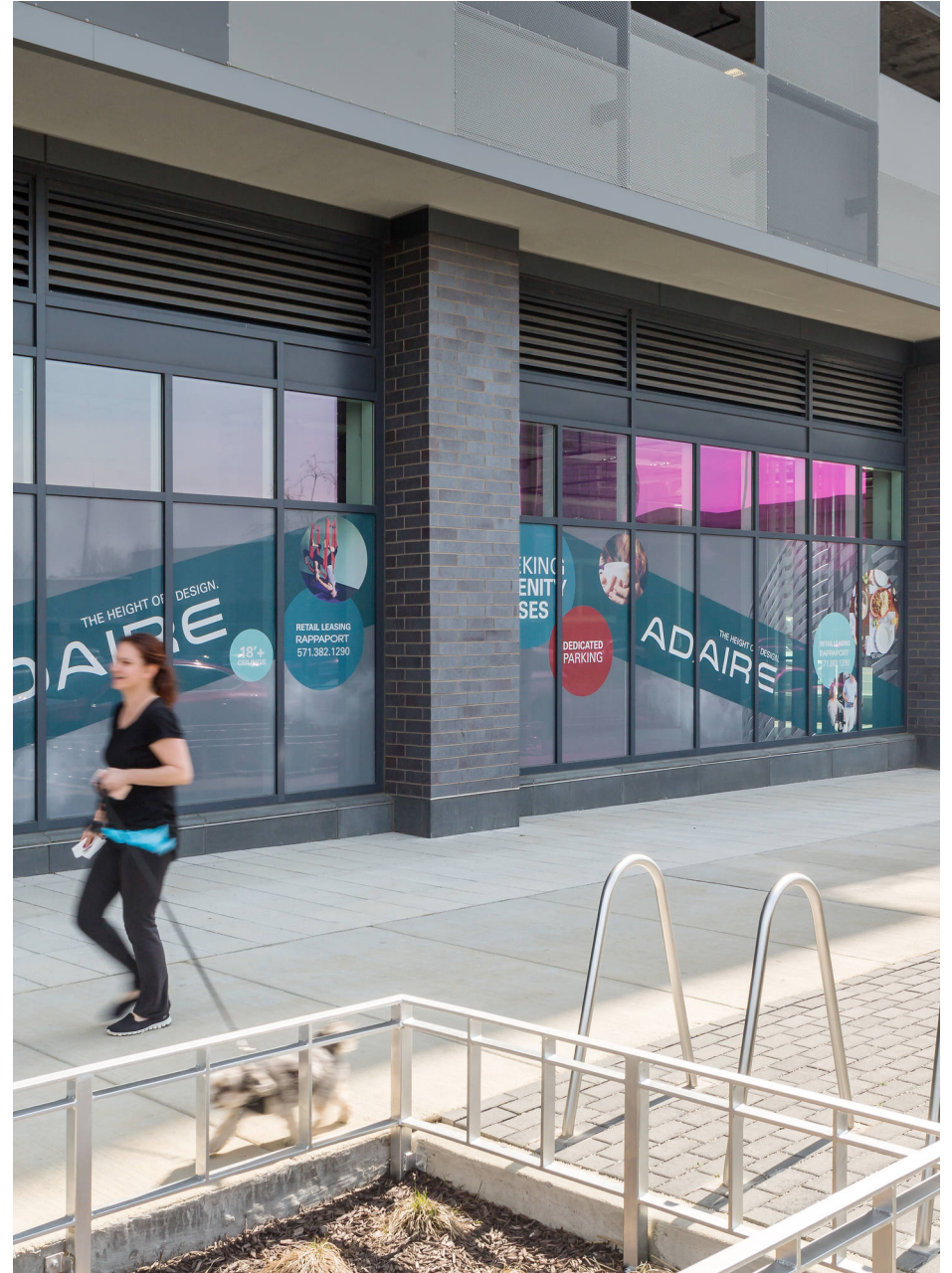
SITE PLAN

ADAIRE | MCLEAN, VA

979,879 SF AVAILABLE



ADAIRE
MCLEAN, VA



RAPPAPORT

ADAIRE | TYCO ROAD, MCLEAN, VA

rappaportco.com