

1800 M STREET NW

WASHINGTON, DC

2,183 - 6,821 SF AVAILABLE





RAPPAPORT



1800 M STREET NW WASHINGTON, DC

Former restaurant space located on M street in DuPont’s hot fast casual trade area just south of DuPont Circle. This 6,821 SF divisible space is surrounded by almost 50 million SF of office within just half a mile of the site. The former medical space can be vented for restaurant use and has a potential outdoor patio area.

DEMOGRAPHICS 2024

	0.25 MILE	0.5 MILE	1 MILE
 POPULATION	1,072	14,508	71,149
 DAYTIME POPULATION	17,320	140,074	265,710
 HOUSEHOLD INCOME	\$89,615	\$216,643	\$143,962
 TRAFFIC COUNTS	20,800 on M Street NW		

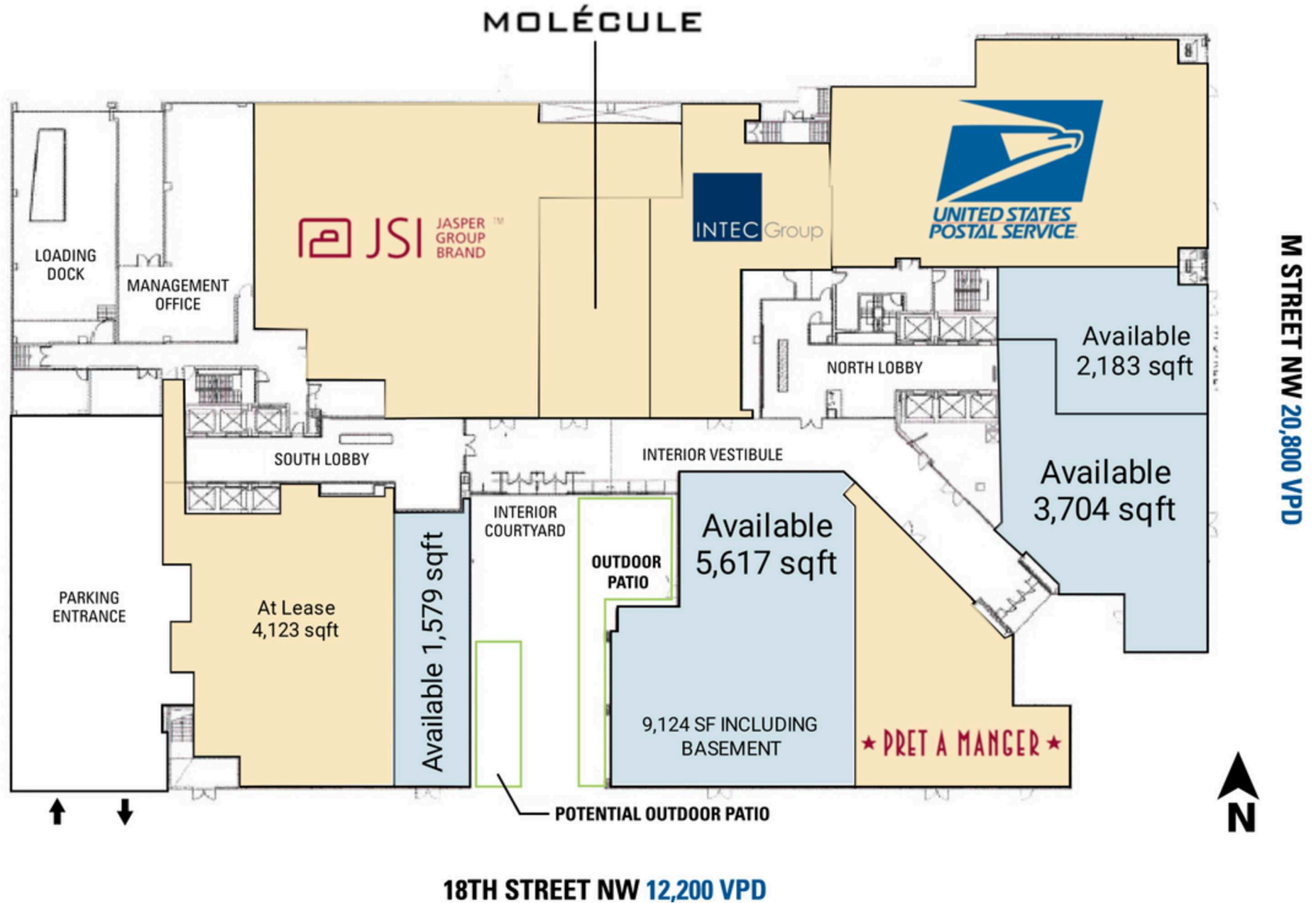
AREA RETAILERS



FIRST FLOOR RETAIL

1800 M STREET NW | WASHINGTON, DC

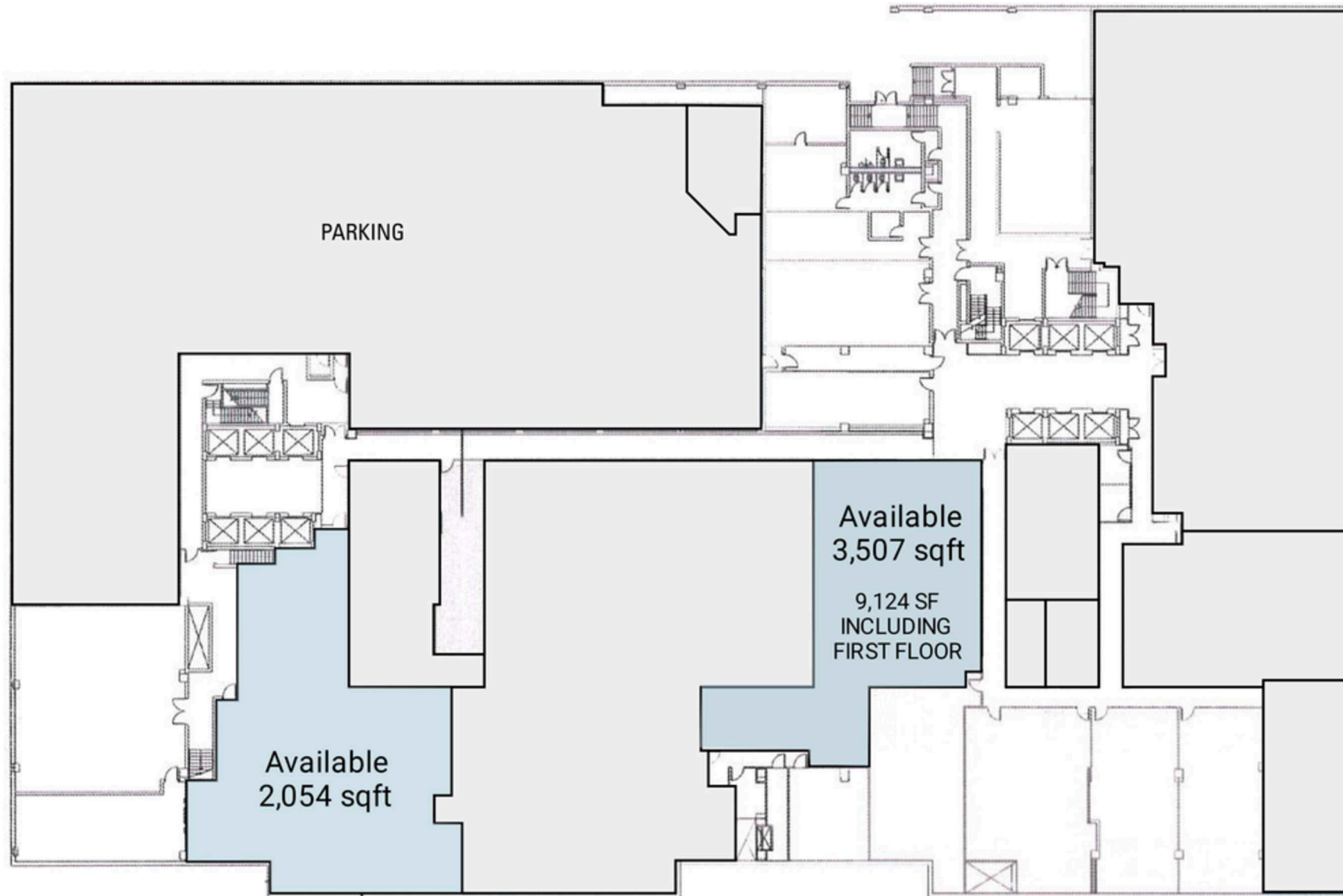
2,183 - 6,821 SF AVAILABLE



LOWER LEVEL RETAIL

1800 M STREET NW | WASHINGTON, DC

2,054 SF AVAILABLE

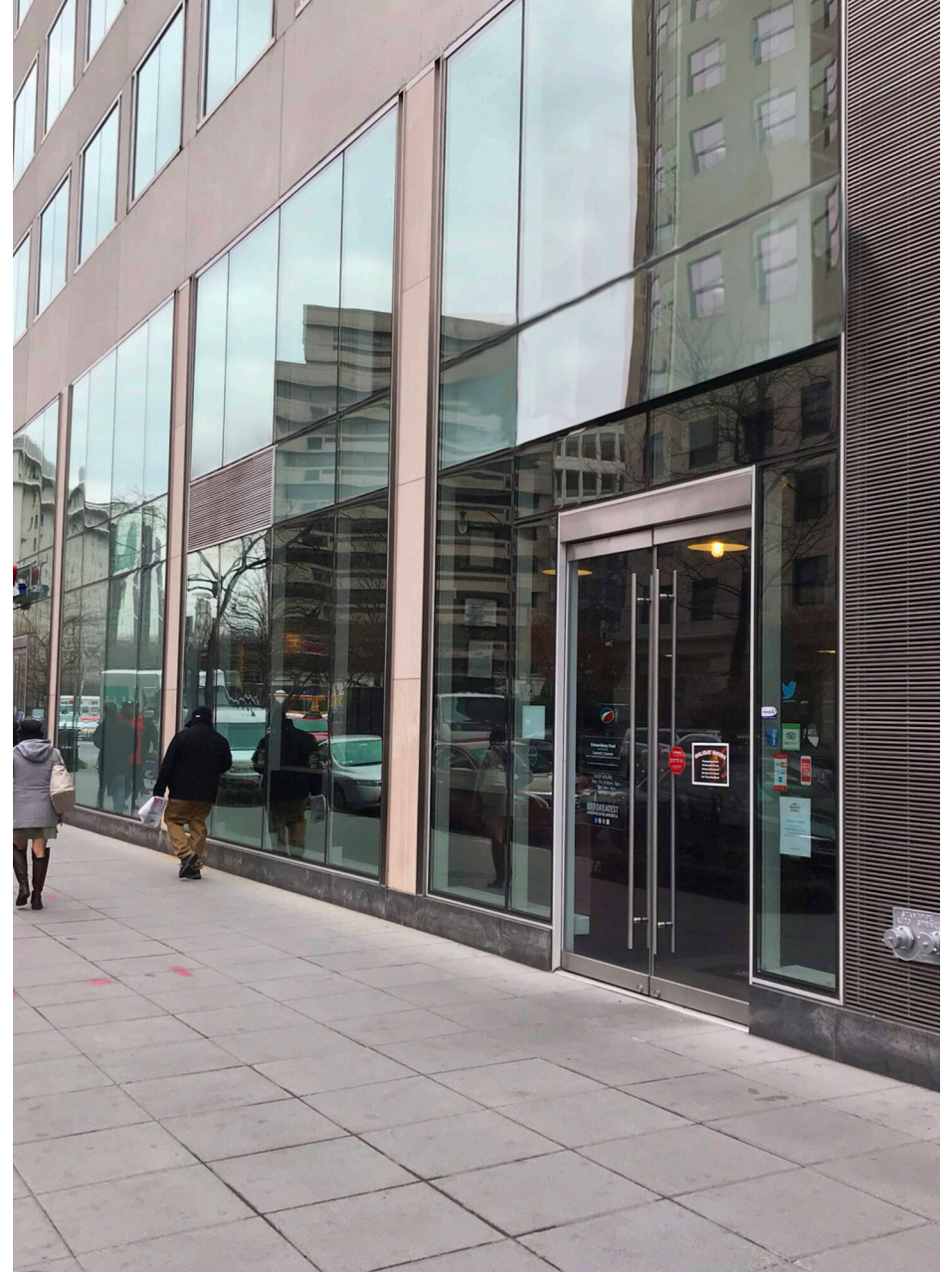


M STREET NW 20,800 VPD

18TH STREET NW 12,200 VPD



1800 M STREET NW
WASHINGTON, DC



RAPPAPORT

1800 M STREET NW | 1800 M ST NW, WASHINGTON, DC

Bill Dickinson | bdickinson@rappaportco.com | 703.310.6983

Patrick O'Meara | pomeara@rappaportco.com | 571.382.1218

rappaportco.com