

1330 7TH STREET NW

WASHINGTON, DC
693 - 2,378 SF AVAILABLE




RAPPAPORT



1330 7TH STREET NW
WASHINGTON, DC

Steps from Logan Circle and the Mount Vernon Square Metro Station, 1330 7th Street provides rare small shop retail space and streetfront visibility to the 11,500 vehicles traveling along 7th Street NW daily. This 10-story mixed-use development offers a prime location in one of D.C.'s fastest growing neighborhoods, with over 1,400 apartments planned for the submarket and 6.4M-square-feet of office within six blocks. Shadow anchored by Giant, this property benefits from the proximal D.C. Convention Center, which hosts over a thousand events and one million attendees annually.

DEMOGRAPHICS 2024

	0.25 MILE	0.5 MILE	1 MILE
 POPULATION	5,691	28,221	88,338
 DAYTIME POPULATION	1,930	29,187	189,419
 HOUSEHOLD INCOME	\$101,110	\$112,045	\$123,322

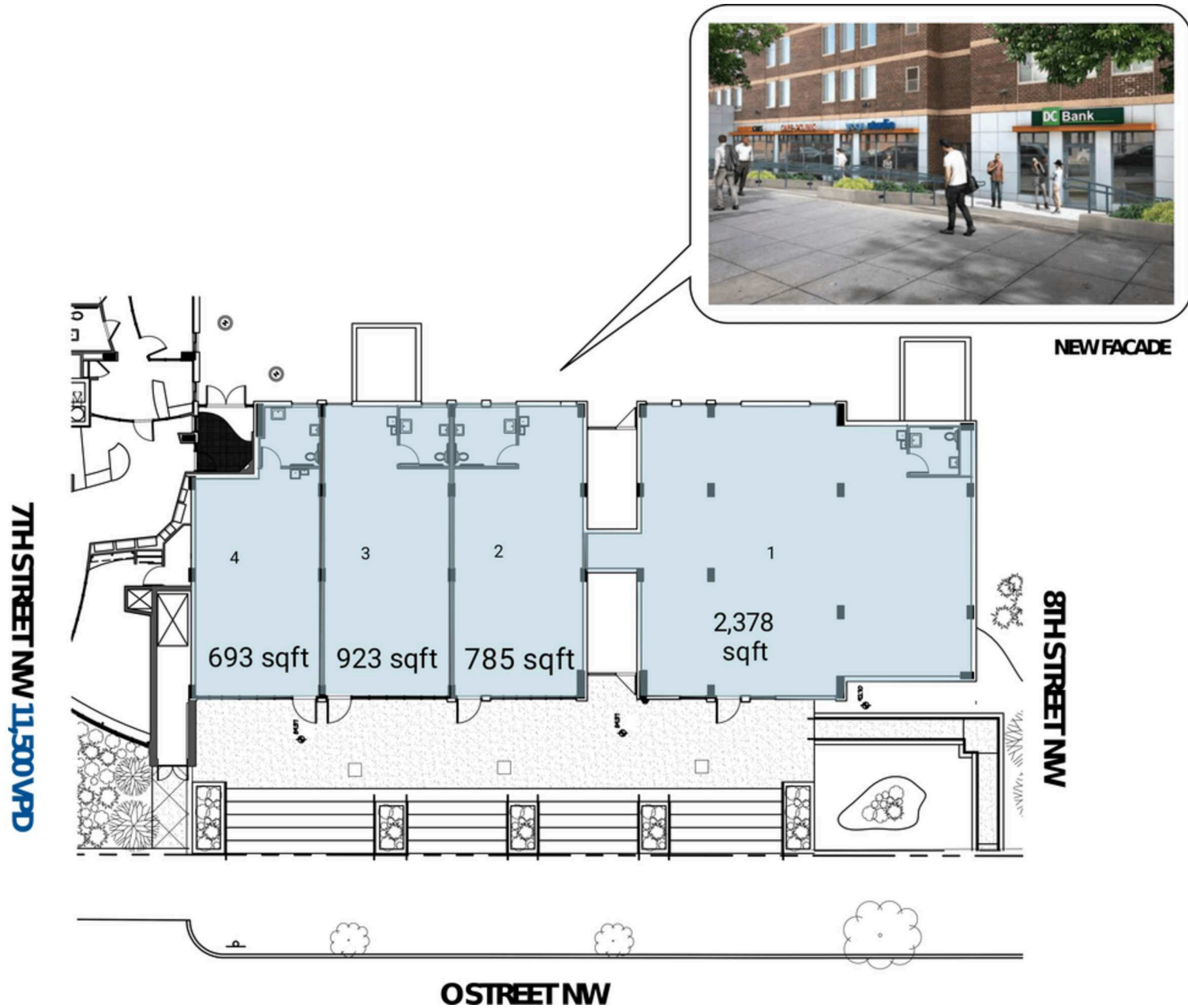
AREA RETAILERS



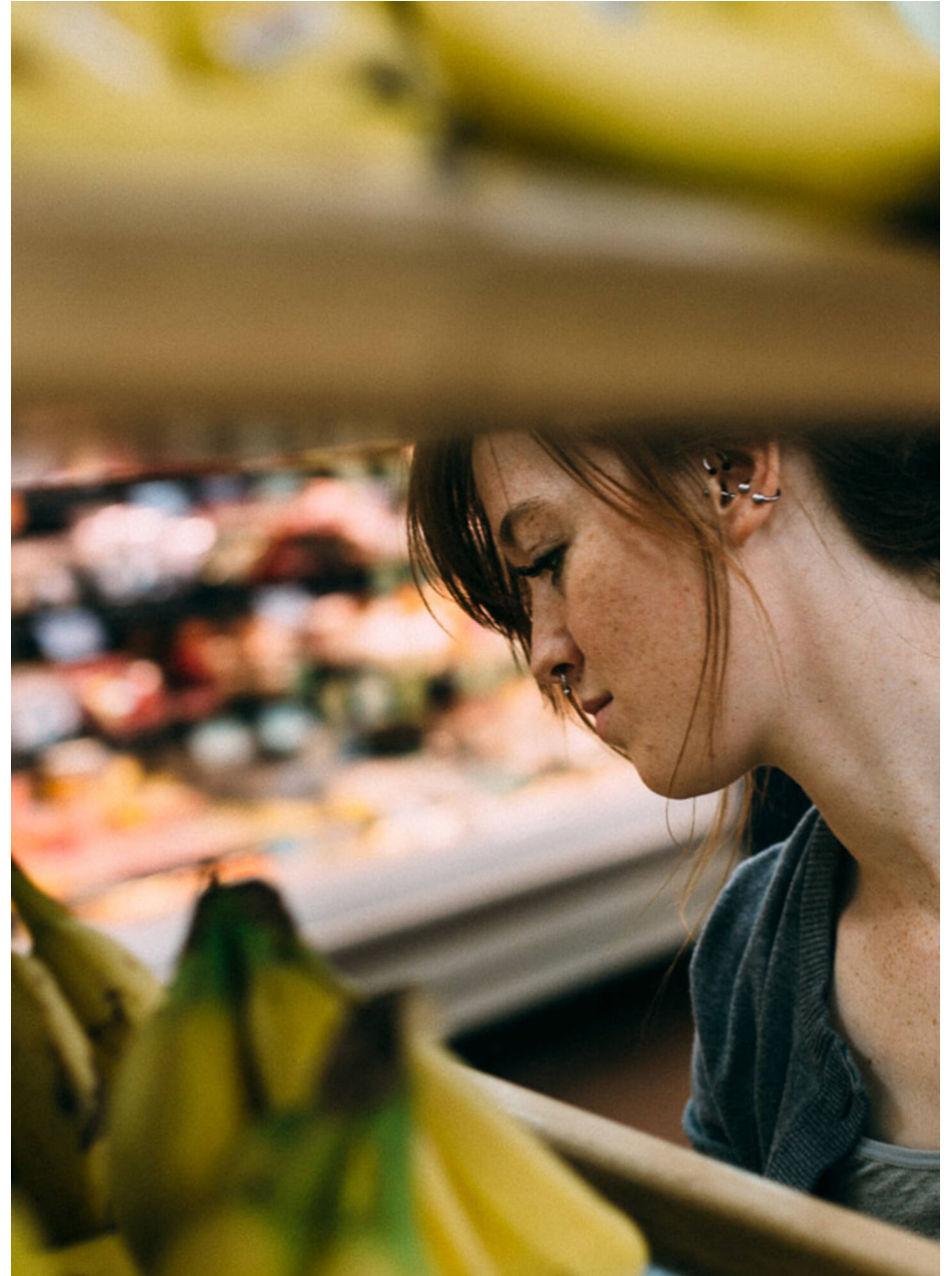
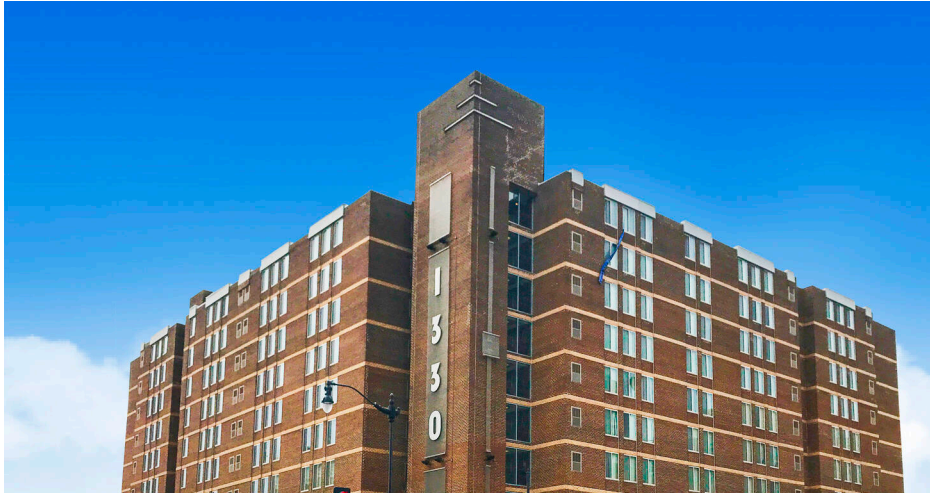
SITE PLAN

1330 7TH STREET NW | WASHINGTON, DC

693 - 2,378 SF AVAILABLE



1330 7TH STREET NW
WASHINGTON, DC



RAPPAPORT

1330 7TH STREET NW | 1330 7TH STREET NW, WASHINGTON, DC

Patrick O'Meara | pomeara@rappaportco.com | 571.382.1218

Kyle Gamber | kgamber@rappaportco.com | 571.382.1216

rappaportco.com