

# 10200 REISTERSTOWN ROAD

OWINGS MILLS, MD

4,923 - 31,517 SF AVAILABLE

RAPPAPORT









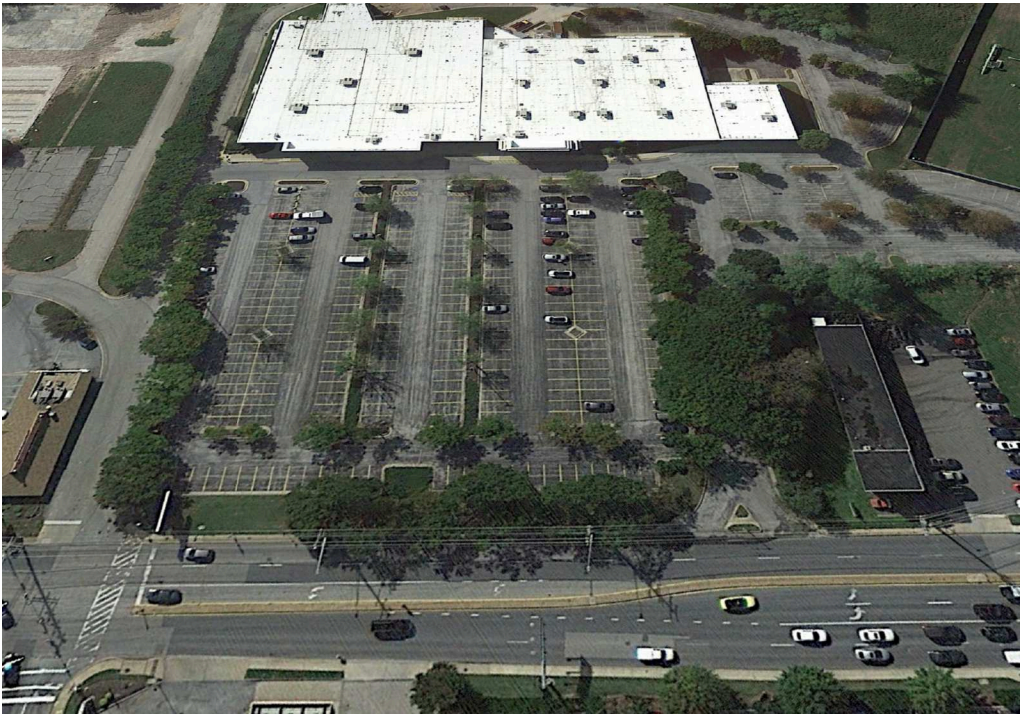
10200 REISTERSTOWN ROAD  
OWINGS MILLS, MD

This is an 81,891 SF collection of stores located just north of Baltimore, MD. It is situated in a pocket of Owings Mills near the crossing of Reisterstown Road and Owings Mills Blvd with highly trafficked tenants, such as Safeway, Wegmans, Home Depot, Walmart, Best Buy, multiple fast-food chains, and more. The plot of land is 9.4 acres total with currently 280 parking spaces and 168’ front. This is available for lease or sale.

DEMOGRAPHICS 2024

	1 MILE	3 MILES	5 MILES
 POPULATION	100,001	75,319	167,276
 DAYTIME POPULATION	20,432	70,915	144,280
 HOUSEHOLD INCOME	\$69,054	\$105,161	\$107,475
 TRAFFIC COUNTS	33,360 on Reisterstown Road		

AREA RETAILERS

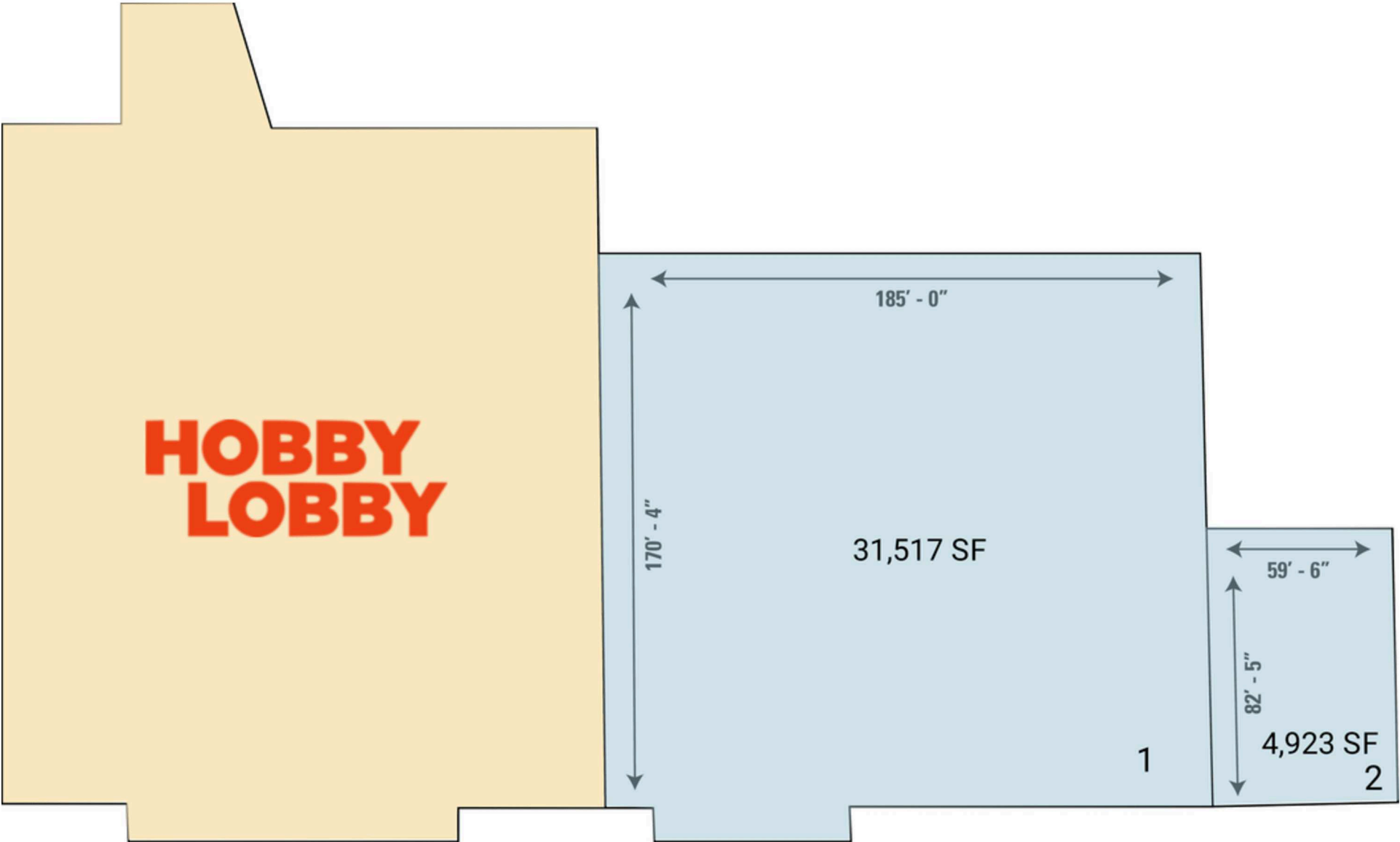




**SITE PLAN (SPACES)**

10200 REISTERSTOWN ROAD | OWINGS MILLS, MD

4,923 - 31,517 SF AVAILABLE



## SITE PLAN

10200 REISTERSTOWN ROAD | OWINGS MILLS, MD

### PARKING REQUIREMENTS

OWINGS MILLS, MD  
EXISTING RETAIL (SHARED)

GLA: 77,172

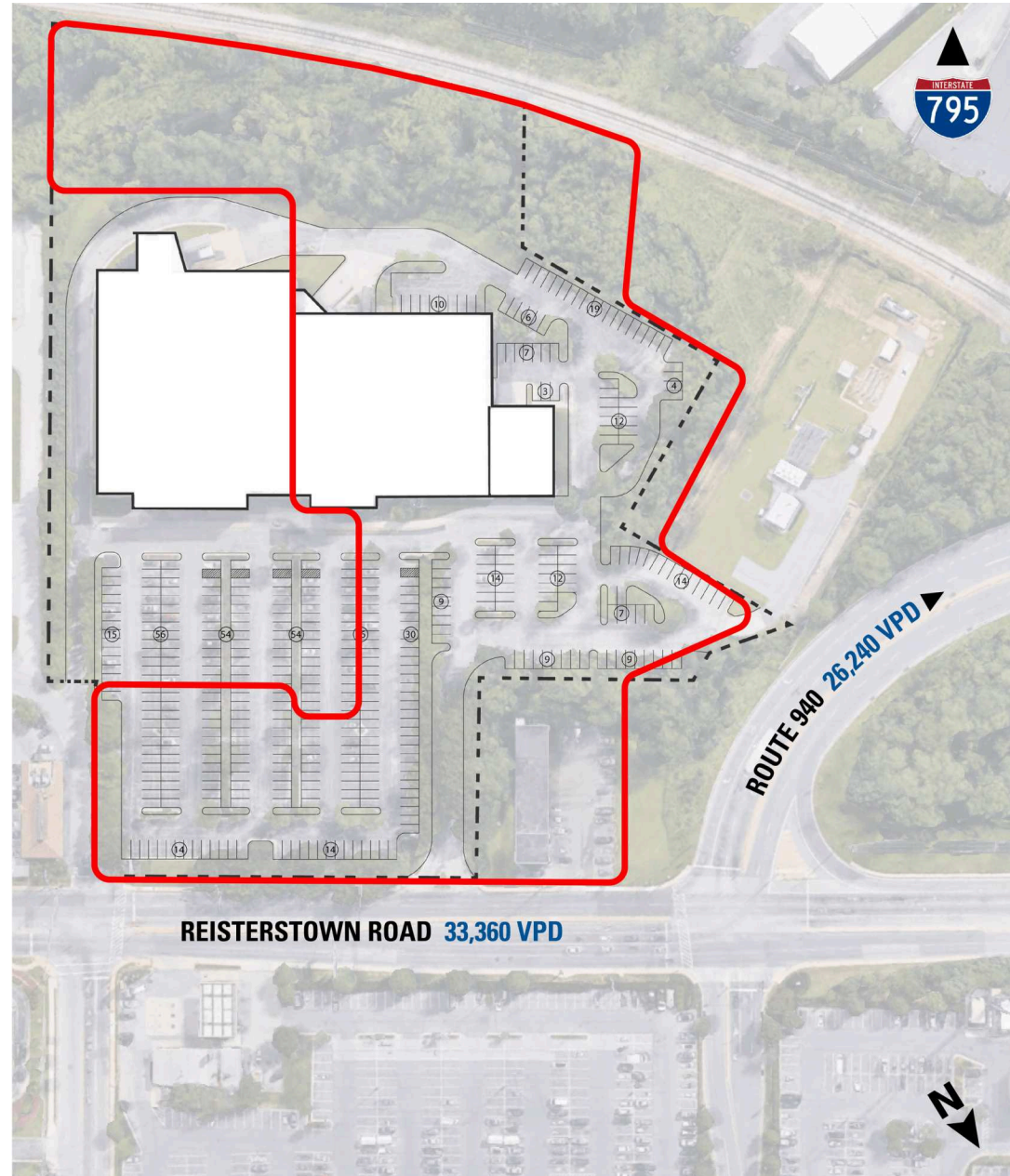
PARKING SPACES: 428

PARKING RATIO ON SITE (/1,000 SF): 5.55

### CODE REQUIRES

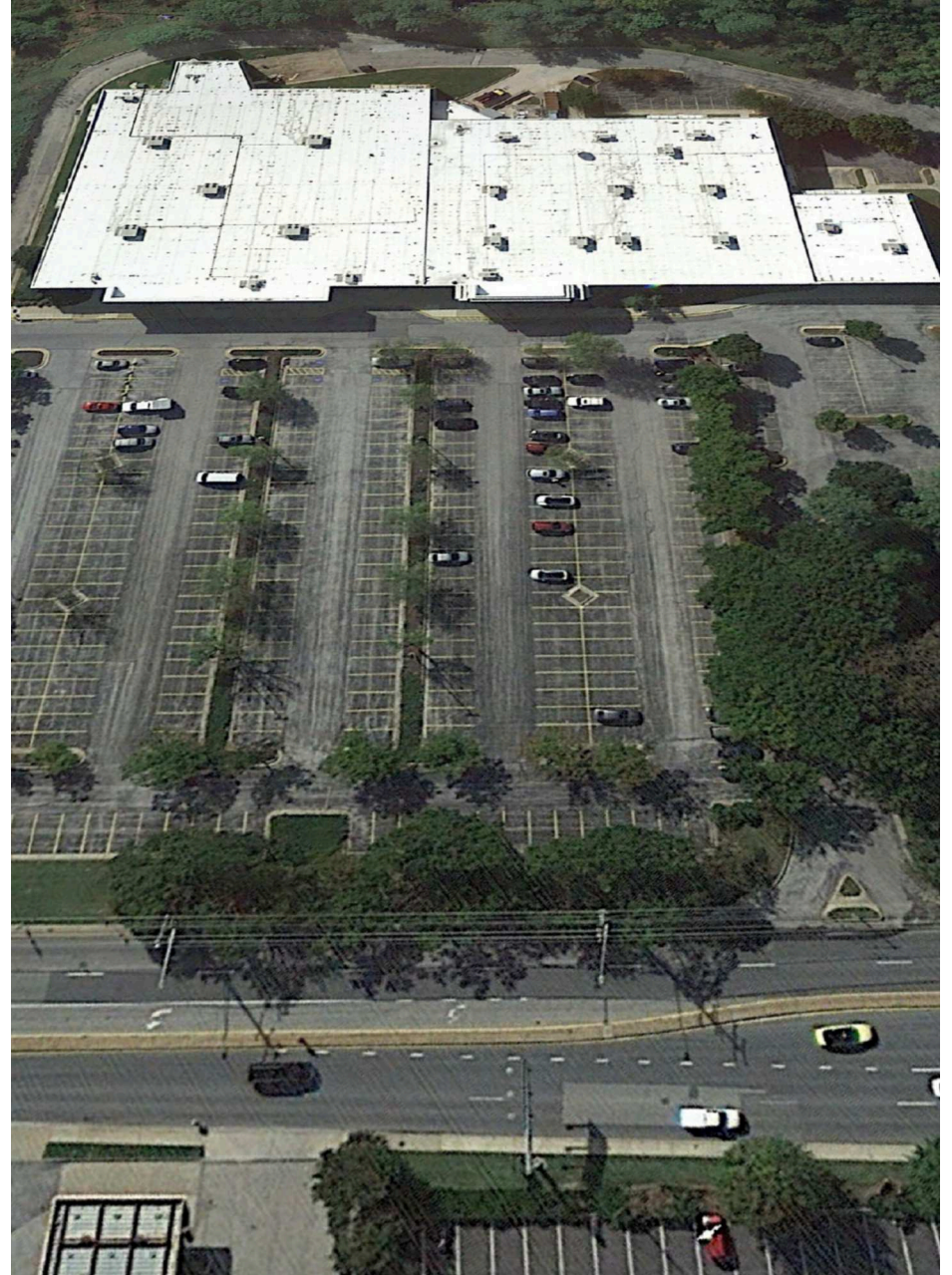
RATIO (/1,000 SF): 5.00

# OF PARKING SPACES: 386





**10200 REISTERSTOWN  
ROAD**  
OWINGS MILLS, MD



# RAPPAPORT

10200 REISTERSTOWN ROAD | 10200 REISTERSTOWN ROAD, OWINGS MILLS, MD

Michael Howard | [mhoward@rappaportco.com](mailto:mhoward@rappaportco.com) | 571.382.1219

[rappaportco.com](http://rappaportco.com)