

THE LANDING

MANASSAS, VA

0 - 0 SF AVAILABLE







RAPPAPORT



THE LANDING
MANASSAS, VA

The Landing is a new 40 acre mixed-use development located at the intersection of Prince William County Parkway and Route 28 (Nokesville Rd) and has build-to-suit opportunities for retail, restaurant, fitness and offices. The opportunity includes 1-8 acre land bays that are available for sale or ground lease. Retail and office buildings will also be available for lease. The project will attract visitors from Manassas Regional Airport as well as commuters from Broad Run Station. The Landing offers great visibility and will benefit from a 110-room hotel, office space and the surrounding residential development.

DEMOGRAPHICS 2024

	3 MILES	5 MILES
 POPULATION	63,936	159,828
 DAYTIME POPULATION	39,293	73,525
 HOUSEHOLD INCOME	\$106,793	\$107,283
 TRAFFIC COUNTS	40,000 on Prince William Parkway	

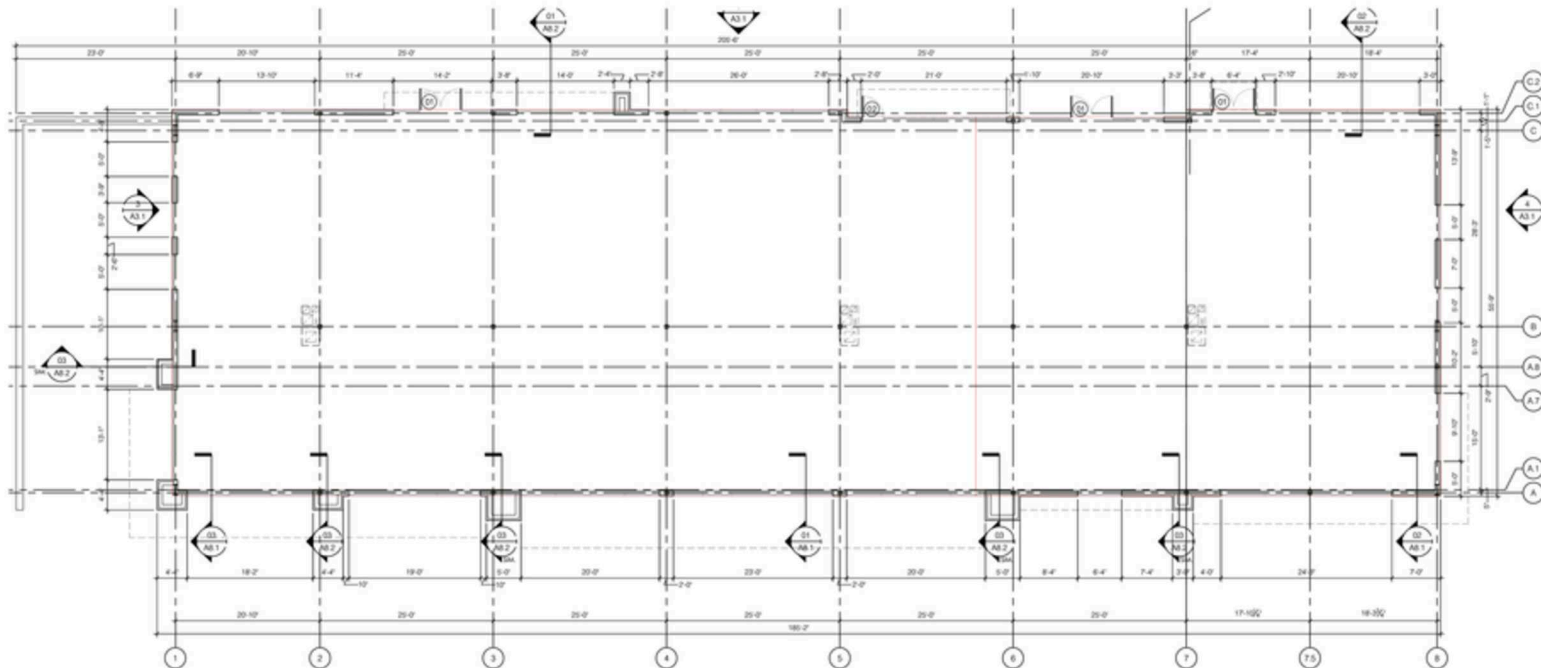
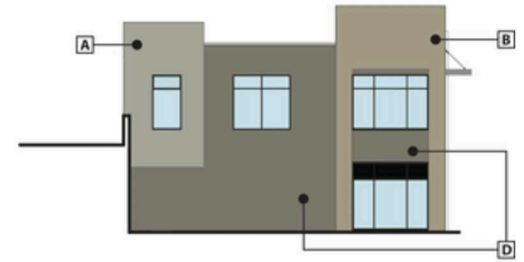
AREA RETAILERS



SITE PLAN

THE LANDING | MANASSAS, VA

RETAIL & OFFICE BUILDING SOUTH ELEVATION



THE LANDING

MANASSAS, VA



RAPPAPORT

THE LANDING | 9800 GODWIN DR, MANASSAS, VA

Susan Bourgeois | sbourgeois@rappaportco.com | 571.382.1288

rappaportco.com