



RAPIDREPORT





**FALLS CHURCH, VA**  
4,357 - 4,480 SF AVAILABLE

# CROSSROADS PLACE

## FALLS CHURCH, VA

Located directly adjacent to Leesburg Pike (Route 7), Crossroads Place offers Falls Church residents, visitors and professionals a convenient and easily accessible town center with popular nationally recognized retailers. Highly visible from the signalized intersection of Leesburg Pike (38K VPD) and South Jefferson Street, Crossroads Place boasts four prominent curb cuts, ample surface parking and multiple essential and destination retailers such as Giant Food, TJ Maxx, Office Depot and HomeGoods.

### DEMOGRAPHICS 2024

	1 MILE	3 MILES	5 MILES
 POPULATION	43,480	285,907	588,093
 DAYTIME POPULATION	13,122	111,053	361,466
 HOUSEHOLD INCOME	\$87,753	\$117,733	\$135,148
 TRAFFIC COUNTS	38,000 on Leesburg Pike (Route 7)		

### CO-TENANTS





## SITE PLAN

CROSSROADS PLACE | FALLS CHURCH, VA

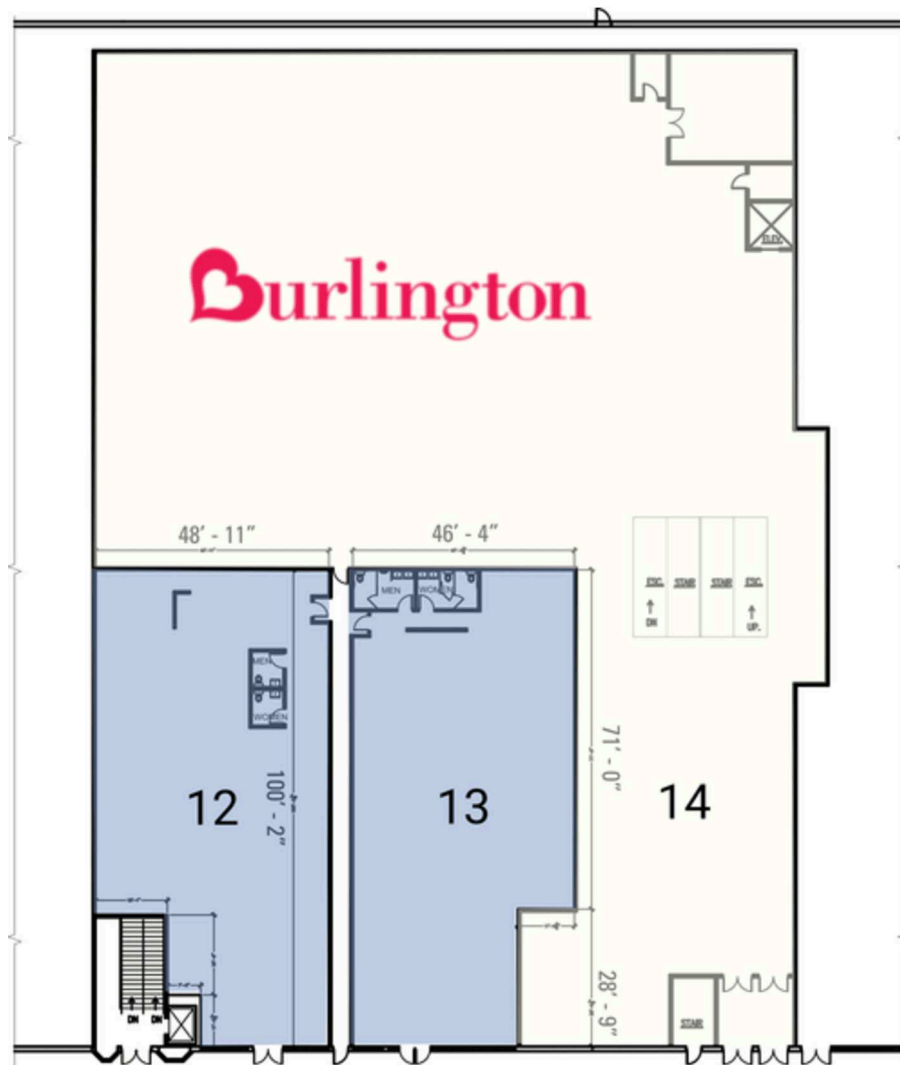
4,357 - 4,480 SF AVAILABLE



## SPACES 12 & 13 - OPTIONS

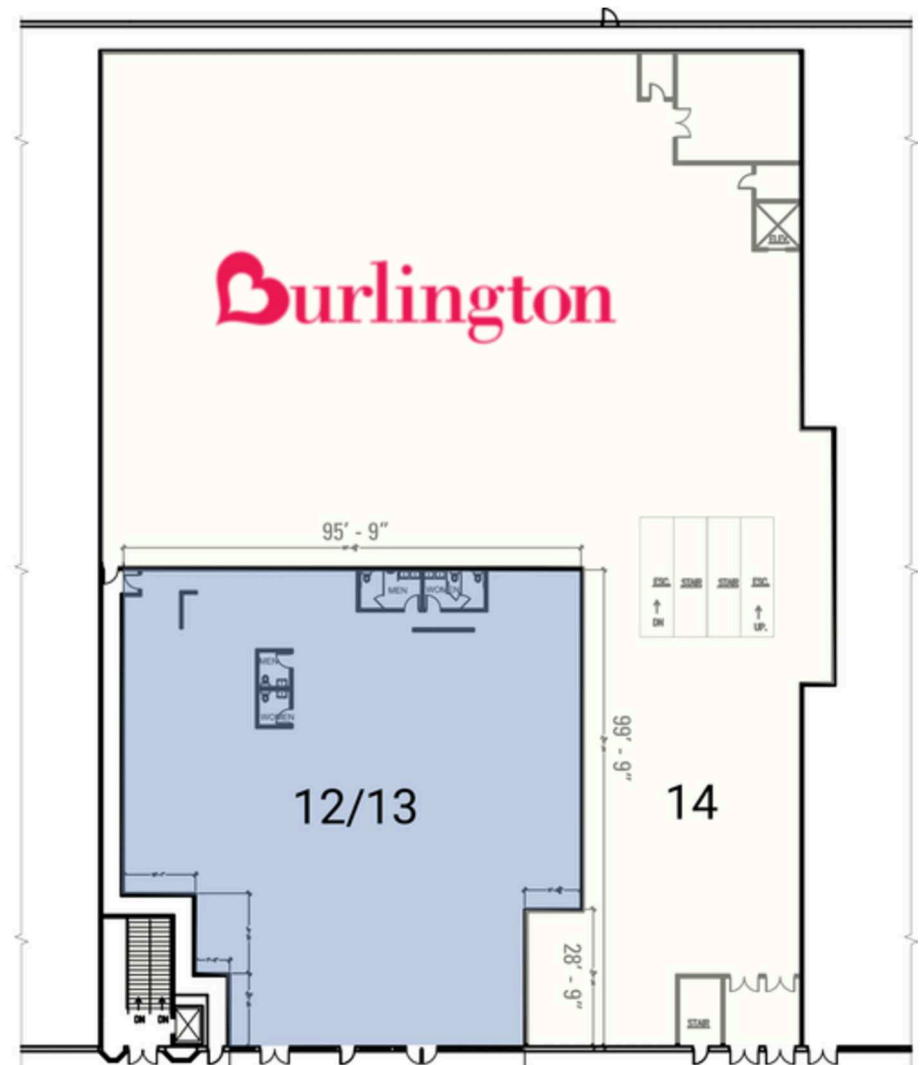
CROSSROADS PLACE | FALLS CHURCH, VA

4,357 - 8,718 SF AVAILABLE



STAIRWELL TO  
MATTRESS WAREHOUSE

OPTION 1



STAIRWELL TO  
MATTRESS WAREHOUSE

OPTION 2

**CROSSROADS PLACE**  
**FALLS CHURCH, VA**

# RAPPAPORT

**CROSSROADS PLACE | 3516 SOUTH JEFFERSON STREET, FALLS CHURCH, VA**

**Bill Dickinson | [bdickinson@rappaportco.com](mailto:bdickinson@rappaportco.com) | 703.310.6983**

**Melissa Webb | [mwebb@rappaportco.com](mailto:mwebb@rappaportco.com) | 571.382.1227**

**[rappaportco.com](http://rappaportco.com)**