

GARRETT PLACE

ANNAPOLIS, MD

0 SF AVAILABLE

RAPPAPORT







GARRETT PLACE

ANNAPOLIS, MD

Surrounded by 18th-century brick houses within the waterfront capital city of Annapolis, Maryland, Garrett Place delivers an idyllic and walkable dining opportunity for residents and employees of the nearby Maryland State House, the Circuit Court for Anne Arundel County, and multiple law offices just blocks away. Featuring a walk-in freezer, an abundant 4,037 square feet of space, and charming brick-laden sidewalks out front, Garrett Place is effortlessly spotted along the primary roadway in and out of downtown Annapolis on West Street.

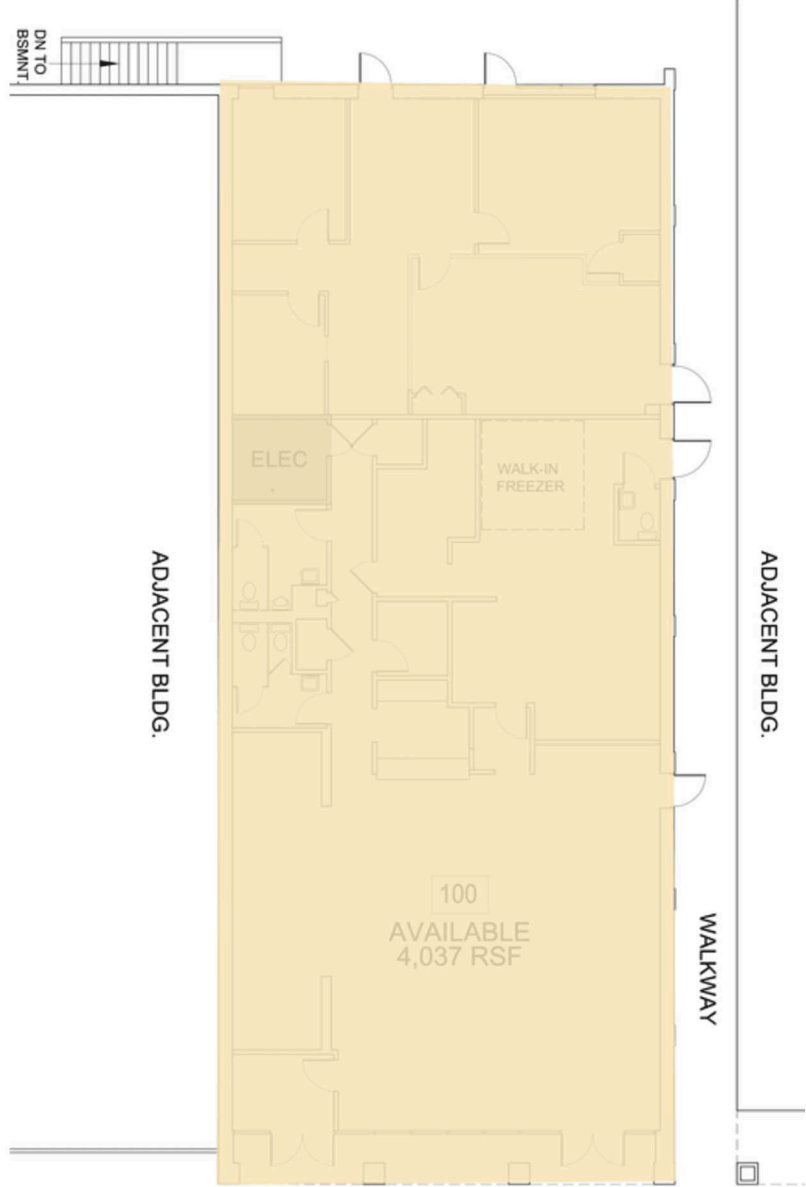
DEMOGRAPHICS 2024

	1 MILE	3 MILES	5 MILES
 POPULATION	15,857	65,212	113,536
 DAYTIME POPULATION	32,484	105,525	157,105
 HOUSEHOLD INCOME	\$117,783	\$127,385	\$135,972
 TRAFFIC COUNTS	37,000 on West Street		

AREA RETAILERS

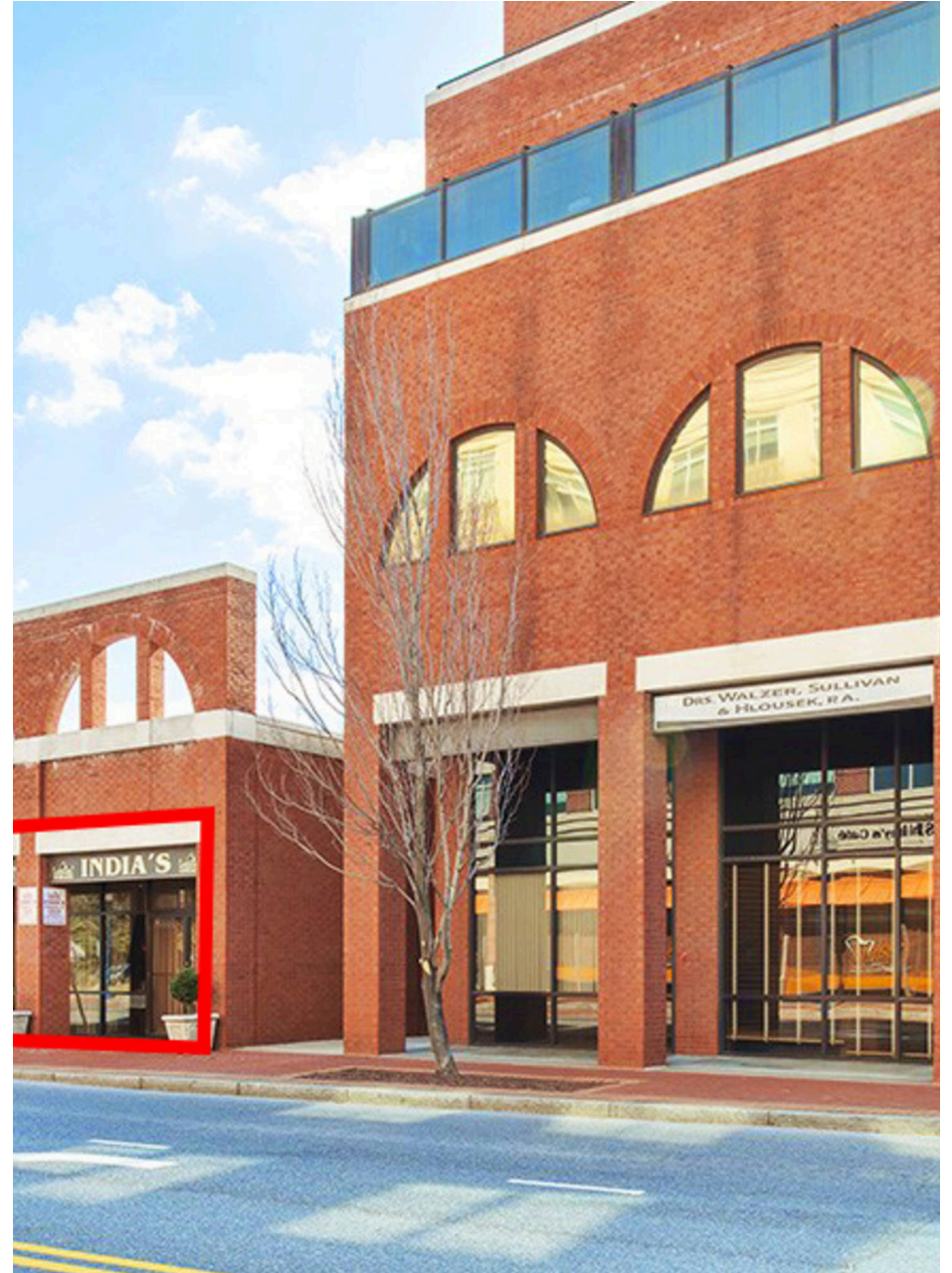


SITE PLAN
GARRETT PLACE | ANNAPOLIS, MD



WEST STREET 37,000 VPD

GARRETT PLACE
ANNAPOLIS, MD



RAPPAPORT

GARRETT PLACE | 257 WEST STREET, ANNAPOLIS, MD

Bill Dickinson | bdickinson@rappaportco.com | 703.310.6983

Melissa Webb | mwebb@rappaportco.com | 571.382.1227

Michael Howard | mhoward@rappaportco.com | 571.382.1219

rappaportco.com