

332 MAPLE AVENUE E
VIENNA, VA





RAPPAPORT



332 MAPLE AVENUE E
VIENNA, VA

XXXX SF former Peet’s Coffee space directly on Maple Avenue E in Vienna, VA. This building has direct access from the main road with a drive-thru lane and on-site parking availabilities. It is located in the dense shopping district of Vienna near multiple shopping centers and stand-alone buildings, including Giant, Michaels, CVS Pharmacy, Walgreens, Whole Foods, Starbucks, Jammin Java, and The Fresh Market all within a three-block radius.

DEMOGRAPHICS 2024

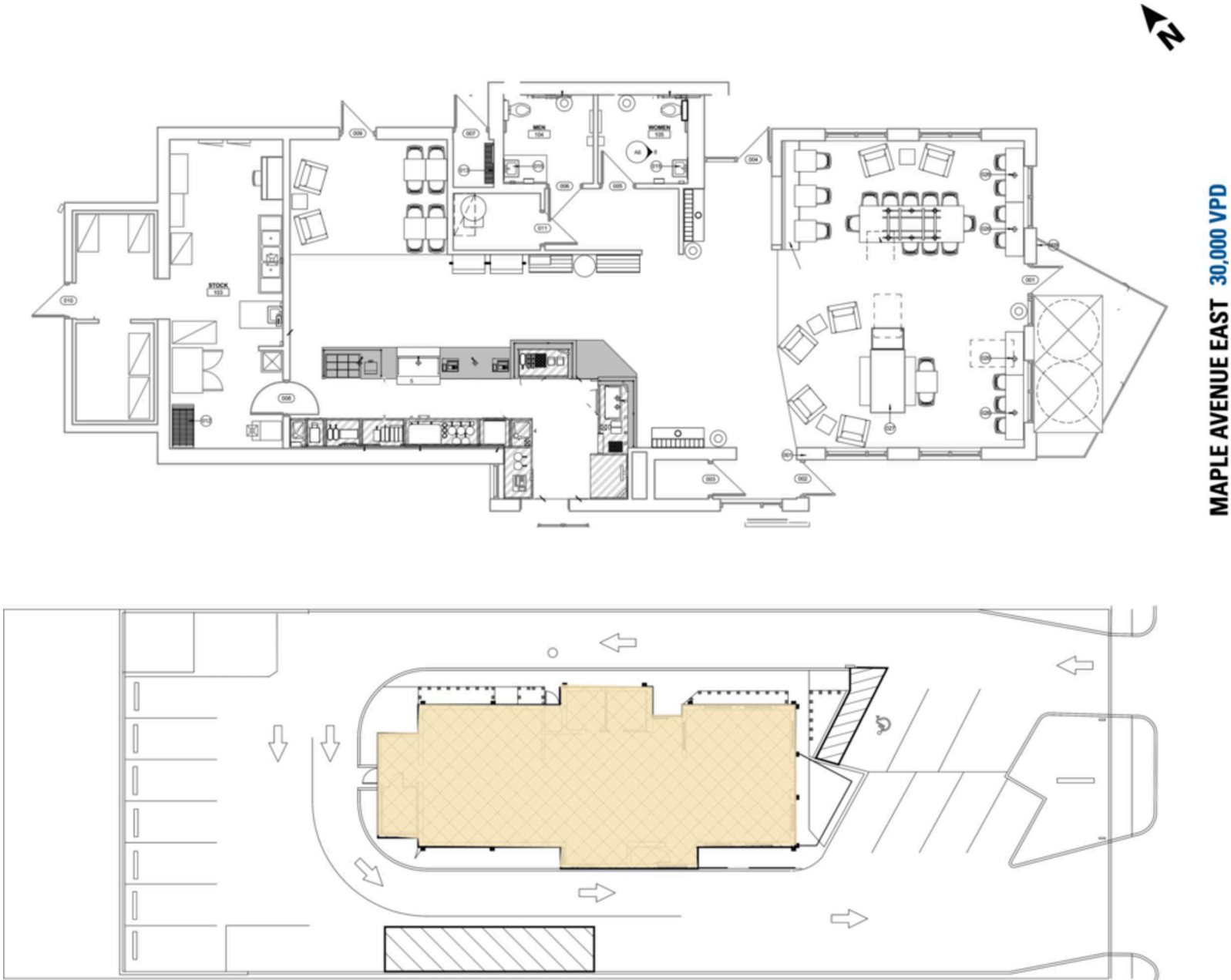
	1 MILE	3 MILES	5 MILES
 POPULATION	9,654	116,898	262,977
 DAYTIME POPULATION	14,715	192,434	361,432
 HOUSEHOLD INCOME	\$222,946	\$174,773	\$179,764
 TRAFFIC COUNTS	30,000 on Maple Avenue		

CO-TENANTS



SITE PLAN

332 MAPLE AVENUE E | VIENNA, VA



332 MAPLE AVENUE
E
VIENNA, VA



RAPPAPORT

332 MAPLE AVENUE E | 332 MAPLE AVENUE E, VIENNA, VA

Bill Dickinson | bdickinson@rappaportco.com | 703.310.6983

Patrick O'Meara | pomeara@rappaportco.com | 571.382.1218

rappaportco.com