

1801 PENNSYLVANIA AVE NW

WASHINGTON, DC
4,200 SF AVAILABLE

RAPPAPORT



1801 PENNSYLVANIA AVE NW

WASHINGTON, DC

Ideally situated on the corner of H and 18th Streets, 1801 Pennsylvania Avenue NW is a central attraction in the heart of Washington, D.C.. Just two blocks from the White House and steps from Farragut West Metro station (Blue, Orange and Silver lines), this 4,200-square-foot retail space boasts high ceilings, expansive outdoor patio space, views of Edward R. Murrow Park and incredible glass frontage easily seen from several high-traffic District streets. With 23 million square feet of office space within a quarter mile and over \$136K average household incomes, 1801 Pennsylvania Avenue NW benefits from a highly educated, high-income immediate trade area with significant spending power.

DEMOGRAPHICS 2024

1 MILE



POPULATION 54,812



**DAYTIME
POPULATION** 266,644

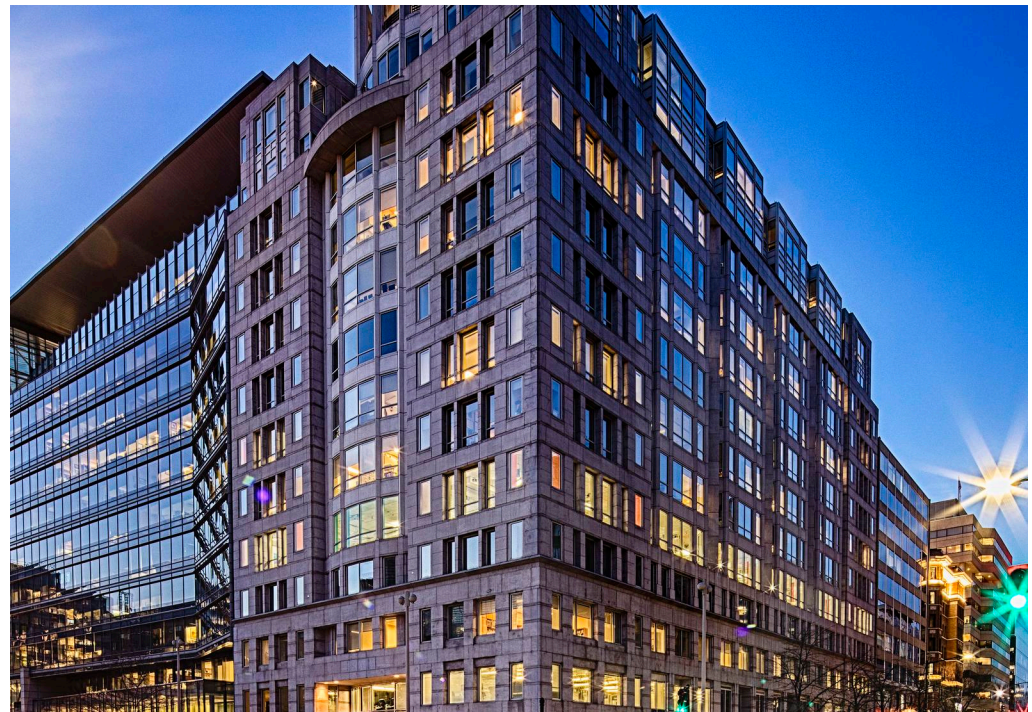


**HOUSEHOLD
INCOME** \$136,639



**TRAFFIC
COUNTS** 9,500 on 18th Street NW

CO-TENANTS

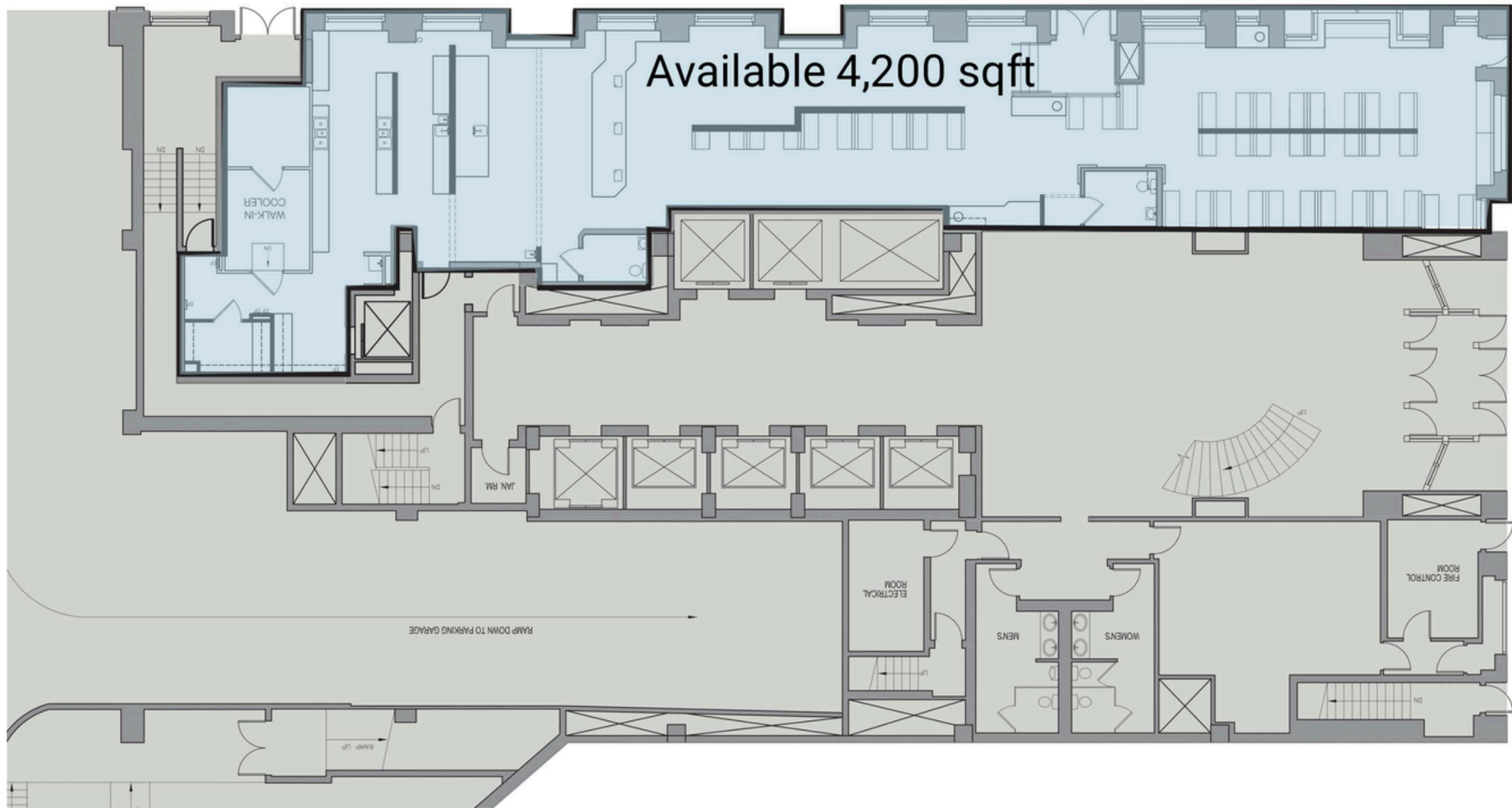


SITE PLAN

1801 PENNSYLVANIA AVE NW | WASHINGTON, DC

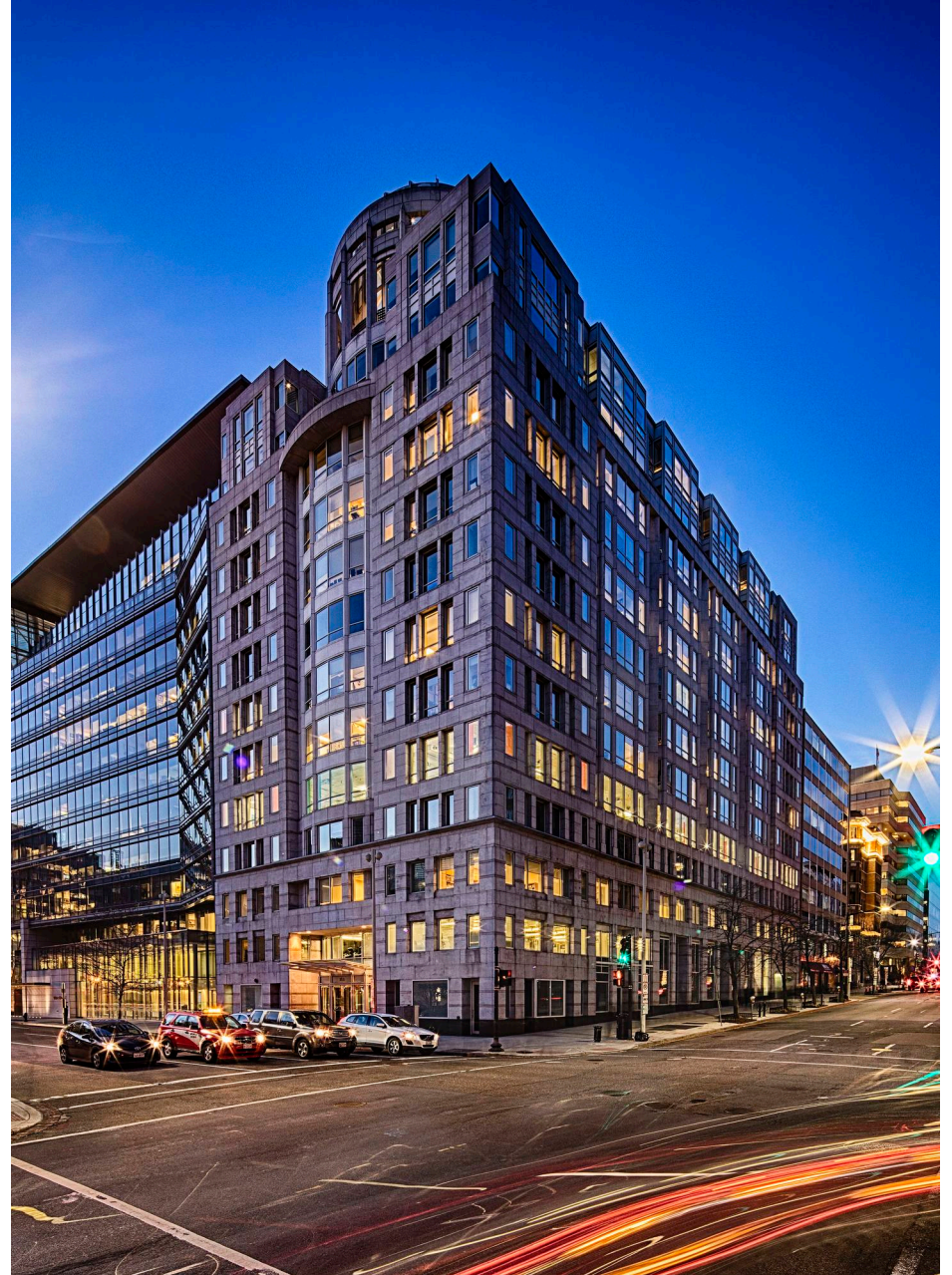
4,200 SF AVAILABLE

18TH STREET NW 9,500 VPD



H STREET NW

1801 PENNSYLVANIA AVE
NW
WASHINGTON, DC



RAPPAPORT

1801 PENNSYLVANIA AVE NW | 1801 PENNSYLVANIA AVE NW, WASHINGTON, DC

Bill Dickinson | bdickinson@rappaportco.com | 703.310.6983

Michael Howard | mhoward@rappaportco.com | 571.382.1219

rappaportco.com