



RAPID RAPPORT

LAKE RIDGE, VA
841 - 6,182 SF AVAILABLE

TACKETT'S MILL LAKESIDE CAFE

LAKE RIDGE, VA

Located along an idyllic lake in this prominently positioned mixed-use shopping center, this 7,052-square-foot lakeside café creates a serene setting for dining and socializing in the prospering Lake Ridge community. Fully built out and equipped second-generation café space, the Tackett’s Mill lakeside café is easily accessible with ample surface parking and multiple curb cuts to the dense residential and daytime populations nearby as well as the commuters traveling along Old Bridge Road (40K VPD).

DEMOGRAPHICS 2024



POPULATION

1 MILE

15,041

3 MILES

89,284



TRAFFIC COUNTS

40,000 on Old Bridge Road

CO-TENANTS



TACKETT'S MILL LAKESIDE
LAKE RIDGE, VA

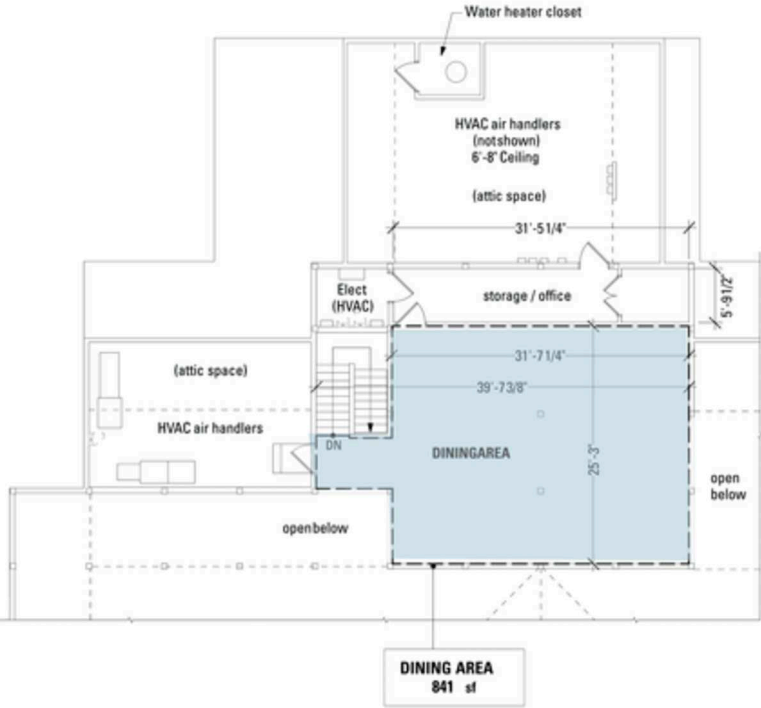


SITE PLAN

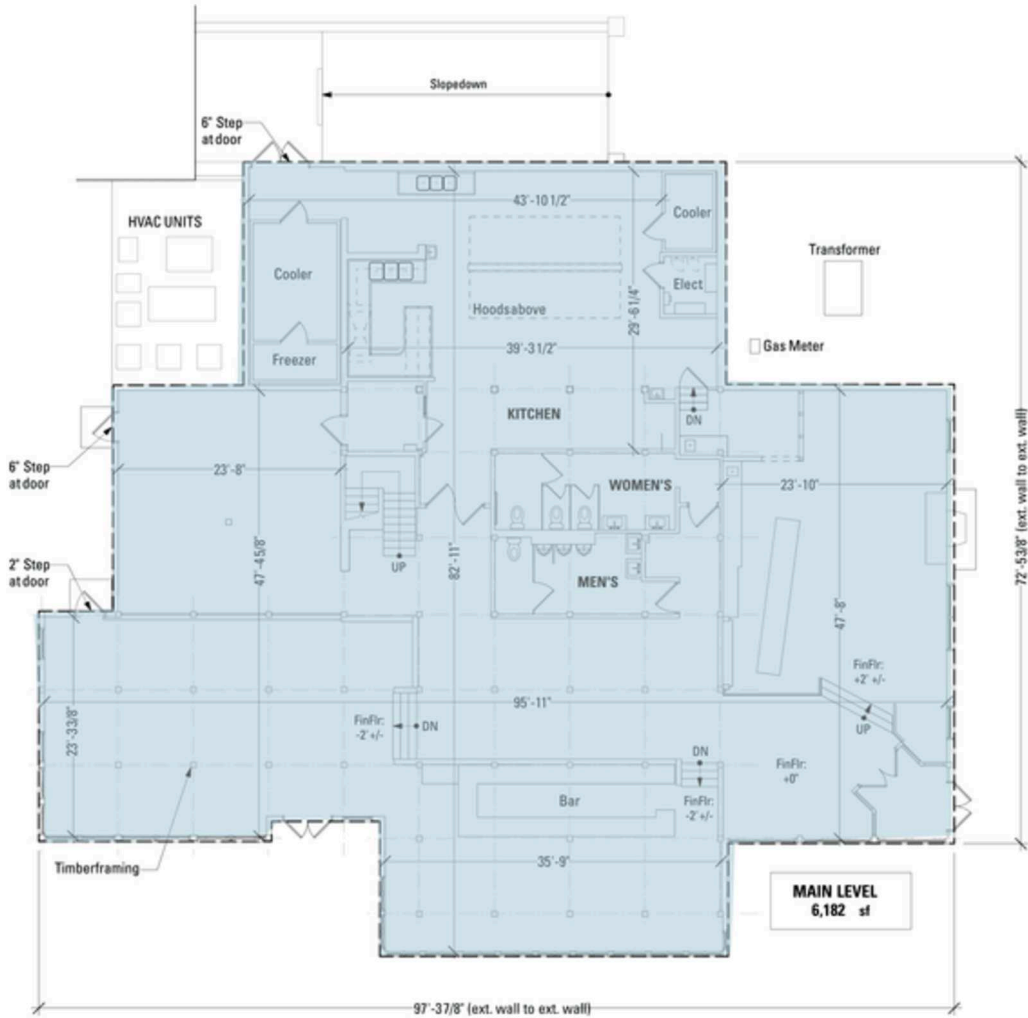
TACKETT'S MILL LAKESIDE CAFE | LAKE RIDGE, VA

841 - 6,182 SF AVAILABLE

UPPER LEVEL

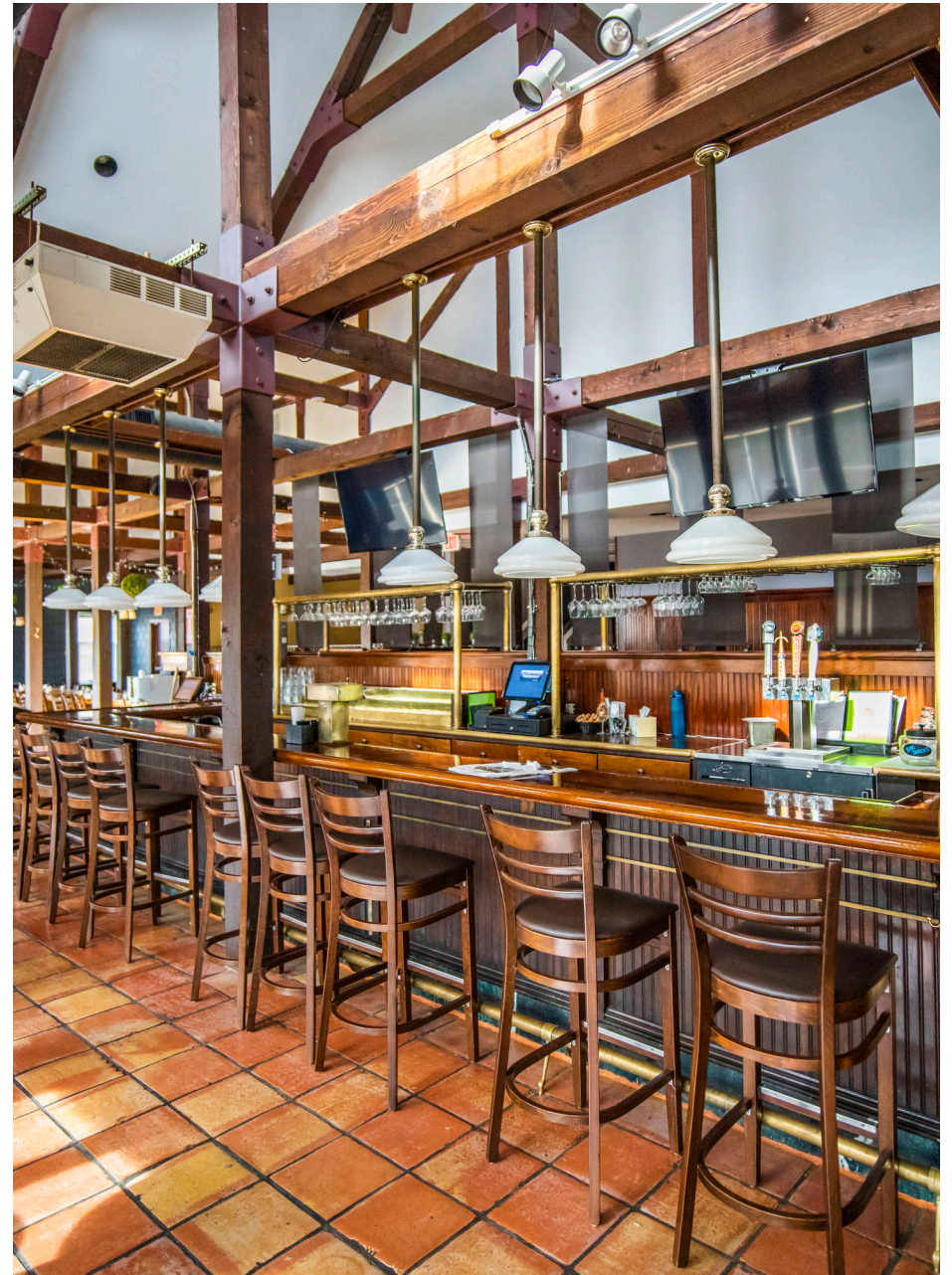


MAIN LEVEL



TACKETT'S MILL LAKESIDE CAFE

LAKE RIDGE, VA



RAPPAPORT

TACKETT'S MILL LAKESIDE CAFE | 2205 OLD BRIDGE ROAD, LAKE RIDGE, VA

Christian Kingston | ckingston@rappaportco.com | 571.382.1255

rappaportco.com