



METROPOLITAN SQUARE |

Washington, DC



Washington, DC

Located on 14th St NW, Metropolitan Square is a 12-story office and retail building that offers dramatic views of The White House, U.S. Treasury and The Mall. With a full-height interior atrium, a three-level underground parking garage, and easy access to the Metro Center rail station.



2024 Demographics

	.5 mi.	1 mi.	2 mi.
Population	3,441	54,302	199,326
Daytime Population	126,874	302,464	468,912
Household Income	\$137,611	\$121,837	\$131,279
Traffic Counts	19000 on 15th Street NW		

Area Retailers



Washington, DC

Located on 14th St NW, Metropolitan Square is a 12-story office and retail building that offers dramatic views of The White House, U.S. Treasury and The Mall. With a full-height interior atrium, a three-level underground parking garage, and easy access to the Metro Center rail station.



2024 Demographics

	.5 mi.	1 mi.	2 mi.
Population	3,441	54,302	199,326
Daytime Population	126,874	302,464	468,912
Household Income	\$137,611	\$121,837	\$131,279
Traffic Counts	19000 on 15th Street NW		

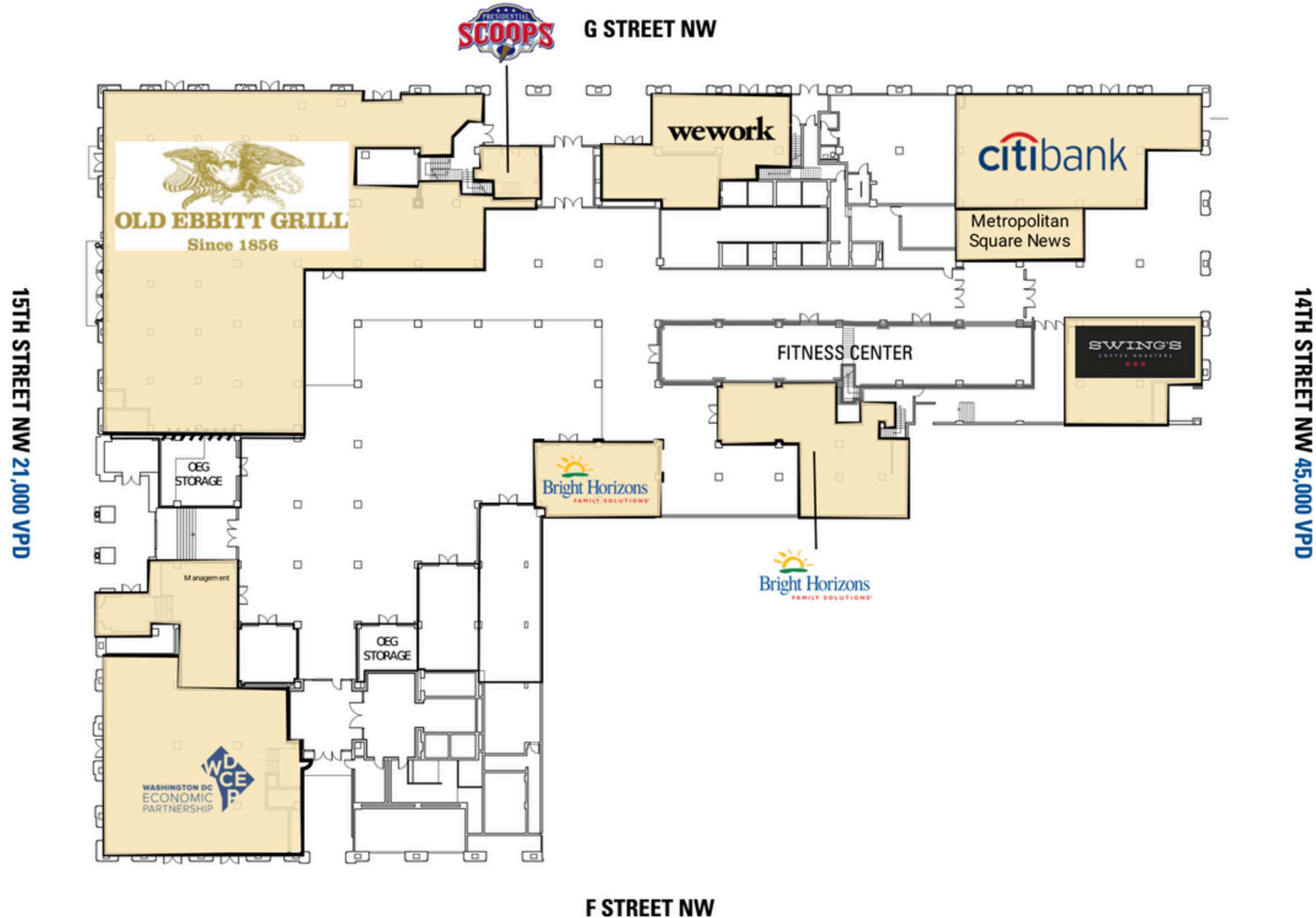
Area Retailers



The Area

Site Plan

● Space Available



The Property



Discover your next retail opportunity at
rappaportco.com



WASHINGTON, D.C. | MARYLAND | VIRGINIA

METROPOLITAN SQUARE | 655 15TH STREET NW, WASHINGTON, DC

Michael Howard | mhoward@rappaportco.com | 571.382.1219