



LEGACY PROPERTY OFFICIAL

Chicago, IL

1,500 - 8,650 SF available

RAPPAPORT
CULTIVATING PLACES

Chicago, IL

Renovated storefronts and facade with excellent opportunity for a fast casual restaurant with wide pedestrian friendly sidewalks and outdoor seating. Located in highly underserved downtown area with limited food options and dense daytime demographics. Exceptional daytime demographics with more than 50,000 employees within a 1/4-mile radius. Located within walking distance to several hotels including: The Westin, Residence Inn, Washington Plaza and Crowne Plaza.

2025 Demographics

	1 mi.	3 mi.	5 mi.
Population	765,432	54,321	4,321
Daytime Population	4,321	4,321	4,321
Household Income	\$65,432	\$765,432	\$8,765,43
Traffic Counts	123 on A1 456 on A2		

Co-Tenants



Siteplan1

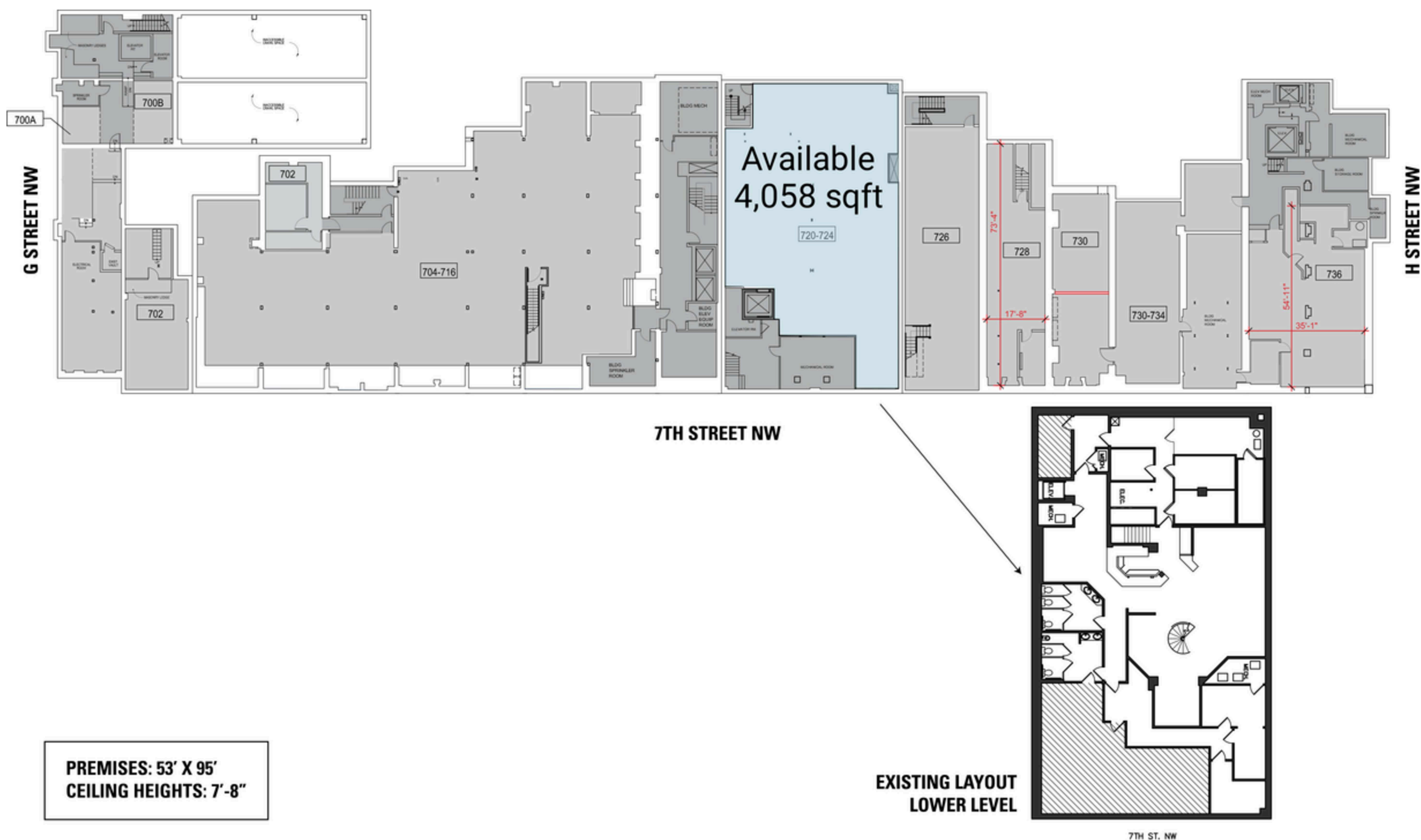
1,500 - 8,650 SF available

● Space Available



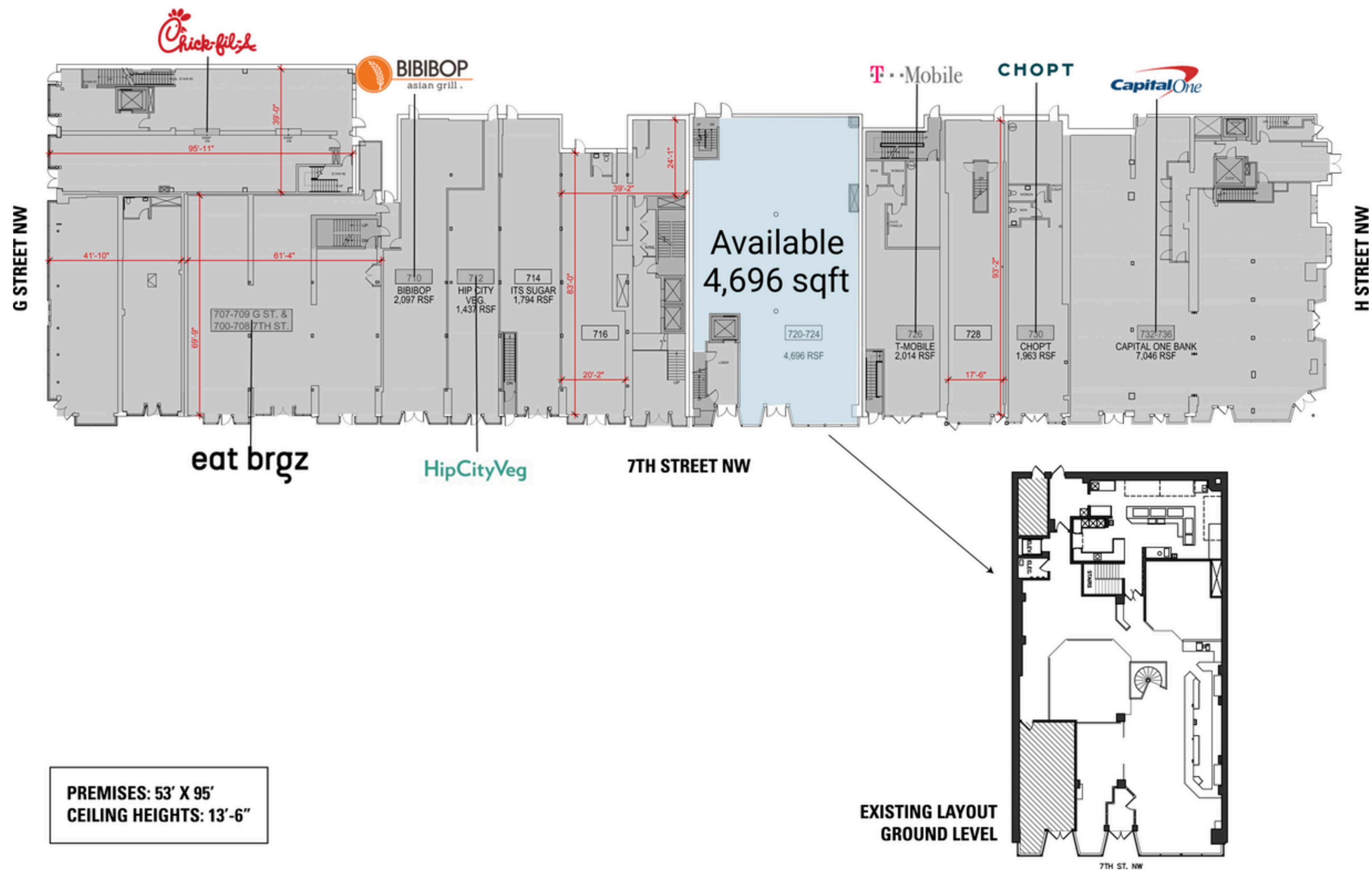
siteplan2

● Space Available



(Untitled)

● Space Available



The Property

Discover your next retail opportunity at
rappaportco.com



WASHINGTON, D.C. | MARYLAND | VIRGINIA

LEGACY PROPERTY OFFICIAL | 119TH STREET, CHICAGO, IL