



GARRETT PLACE

Annapolis, MD

0 SF available

RAPPAPORT
CULTIVATING PLACES

Annapolis, MD

Surrounded by 18th-century brick houses within the waterfront capital city of Annapolis, Maryland, Garrett Place delivers an idyllic and walkable dining opportunity for residents and employees of the nearby Maryland State House, the Circuit Court for Anne Arundel County, and multiple law offices just blocks away. Featuring a walk-in freezer, an abundant 4,037 square feet of space, and charming brick-laden sidewalks out front, Garrett Place is effortlessly spotted along the primary roadway in and out of downtown Annapolis on West Street.



2025 Demographics

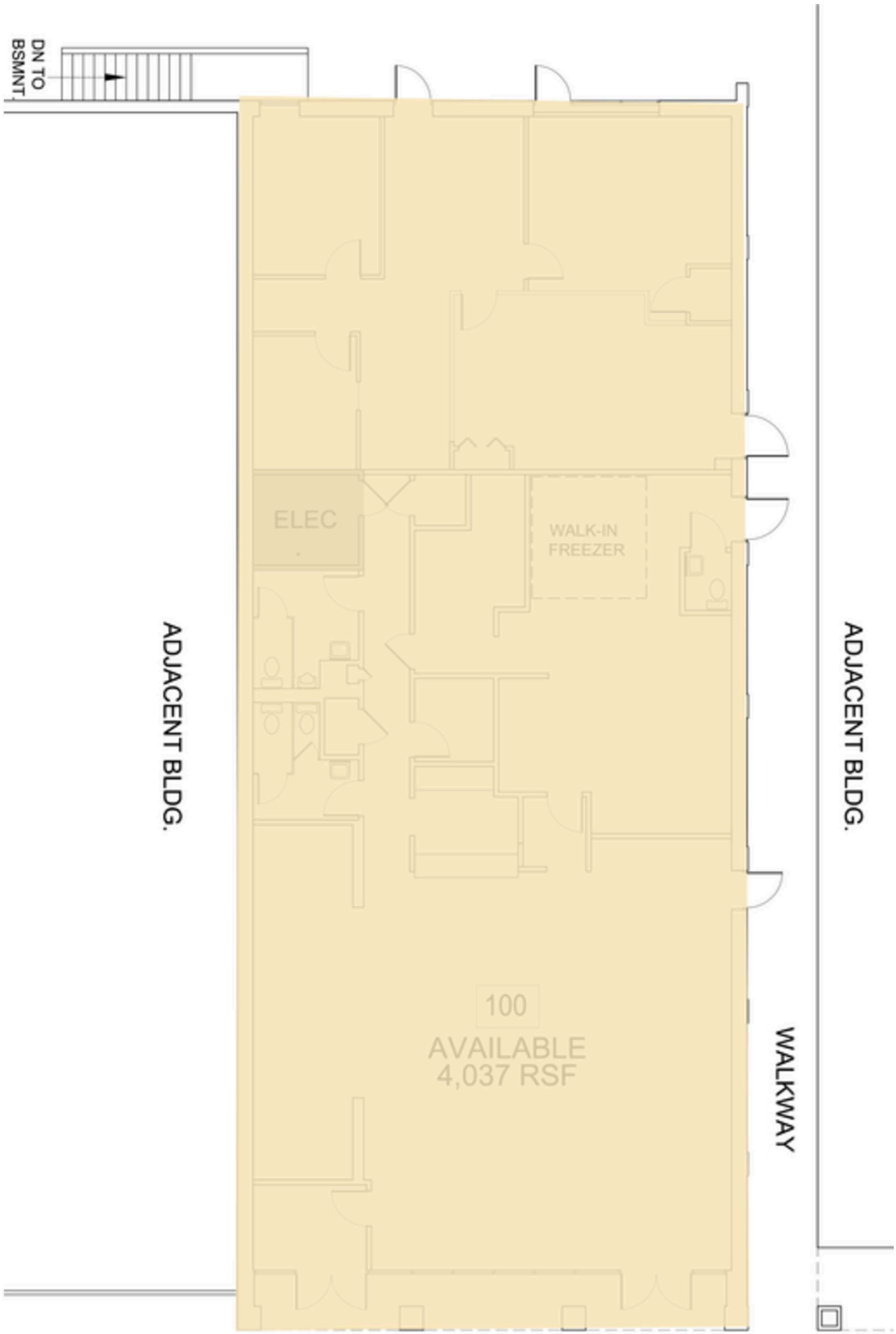
	1 mi.	3 mi.	5 mi.
Population	15,857	65,212	113,536
Daytime Population	32,484	105,525	157,105
Household Income	\$117,783	\$127,385	\$135,972
Traffic Counts	37,000 on West Street		

Area Retailers



Site Plan

- Space Available



The Property



Discover your next retail opportunity at
rappaportco.com



WASHINGTON, D.C. | MARYLAND | VIRGINIA

GARRETT PLACE | 257 WEST STREET, ANNAPOLIS, MD

Bill Dickinson | bdickinson@rappaportco.com | 703.310.6983