



2931 PLANK ROAD
Fredericksburg, VA

5,677 SF available

RAPPAPORT
CULTIVATING PLACES

Fredericksburg, VA

Right next door to one of the top retail destinations in bustling Fredericksburg containing major national retailers such as DSW, Target, and Kohl's, 2931 Plank Road provides a retreat to the Central Park Center shoppers as well as area residents looking for a place to relax and dine both during or after a long day. As a 5,677 SF second-generation restaurant pad site, this dining opportunity sits on 1.4 acres and offers plenty of parking to its patrons with 133 spaces and prominent visibility and pylon signage on Plank Road.



2025 Demographics

	1 mi.	3 mi.	5 mi.
Population	4,482	54,851	128,961
Daytime Population	11,984	43,824	68,833
Household Income	\$112,351	\$89,704	\$99,752
Traffic Counts	76,000 on Plank Road		

Co-Tenants



5,677 SF available

- Space Available

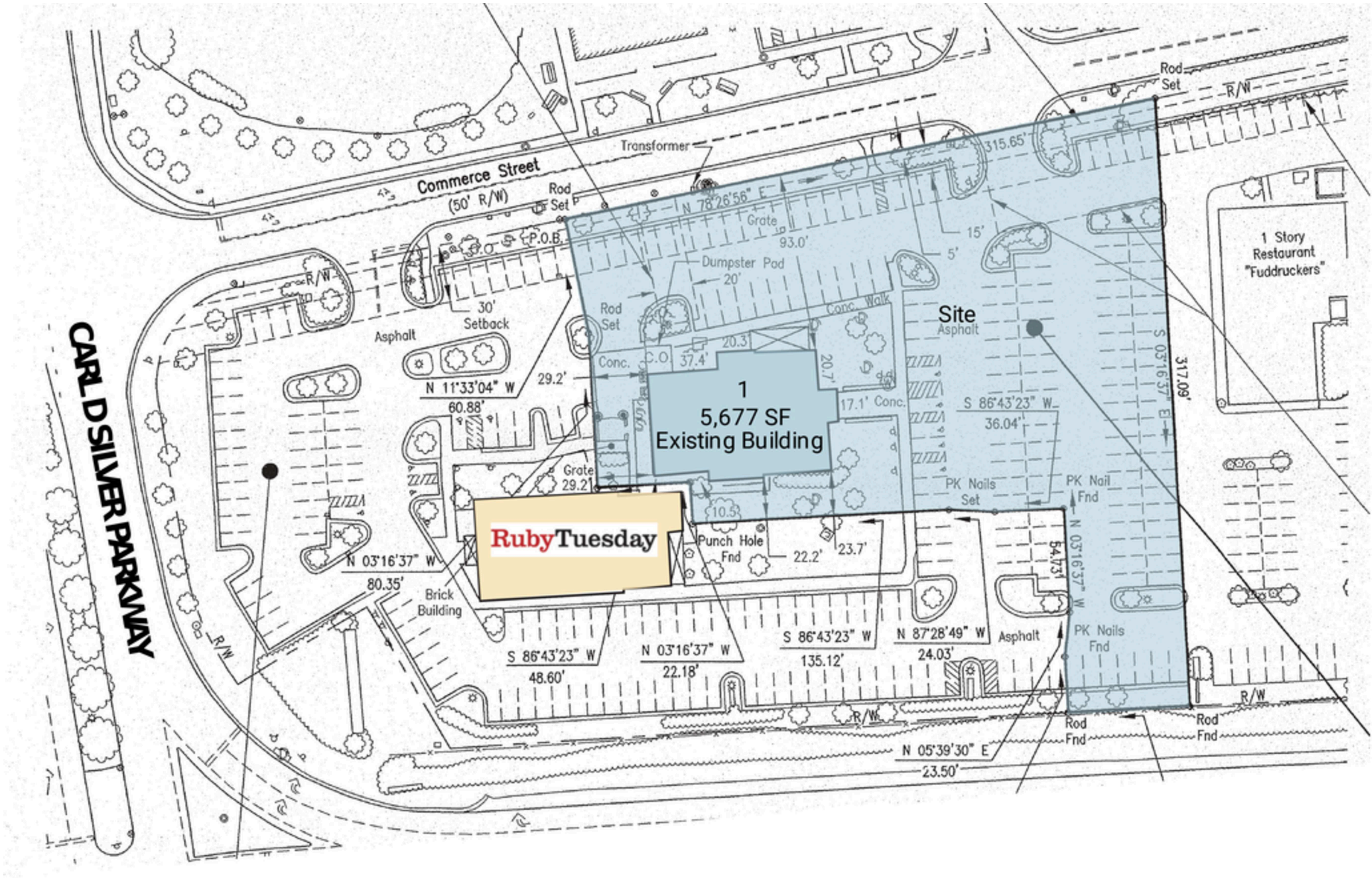


2931 Plank Road

5,677 SF Available

5,677 SF available

● Space Available



PLANK ROAD 76,000 VPD

2931 Plank Road

The Property



2931 Plank Road

Discover your next retail opportunity at
rappaportco.com



WASHINGTON, D.C. | MARYLAND | VIRGINIA

2931 PLANK ROAD | 2931 PLANK ROAD, FREDERICKSBURG, VA

Susan Bourgeois | sbourgeois@rappaportco.com | 571.382.1288