

10200 REISTERSTOWN ROAD

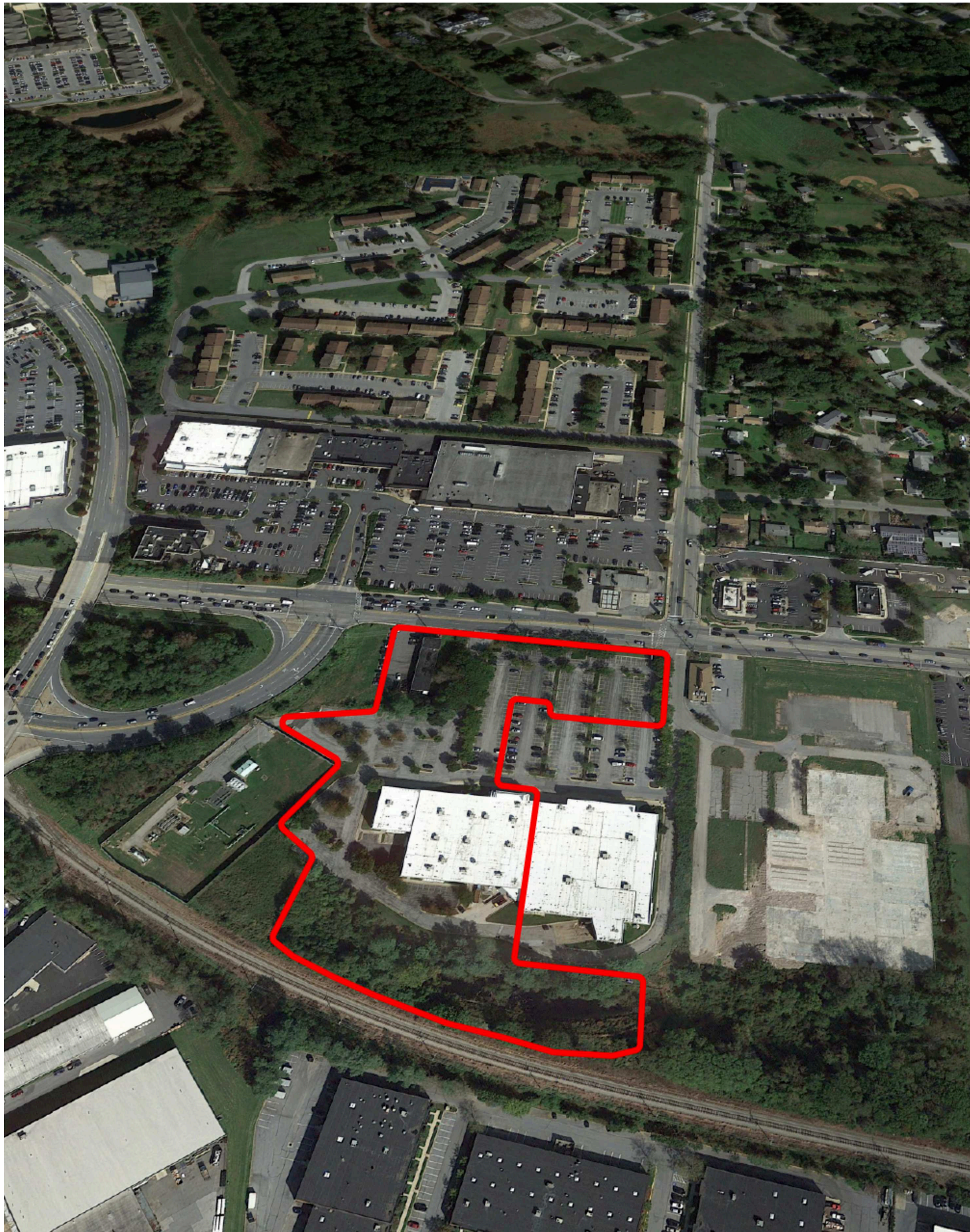
Owings Mills, MD

4,923 - 31,517 SF available

RAPPAPORT
CULTIVATING PLACES

Owings Mills, MD

This is an 81,891 SF collection of stores located just north of Baltimore, MD. It is situated in a pocket of Owings Mills near the crossing of Reisterstown Road and Owings Mills Blvd with highly trafficked tenants, such as Safeway, Wegmans, Home Depot, Walmart, Best Buy, multiple fast-food chains, and more. The plot of land is 9.4 acres total with currently 280 parking spaces and 168' front. This is available for lease or sale.



2025 Demographics

	1 mi.	3 mi.	5 mi.
Population	100,001	75,319	167,276
Daytime Population	20,432	70,915	144,280
Household Income	\$69,054	\$105,161	\$107,475
Traffic Counts	33,360 on Reisterstown Road		

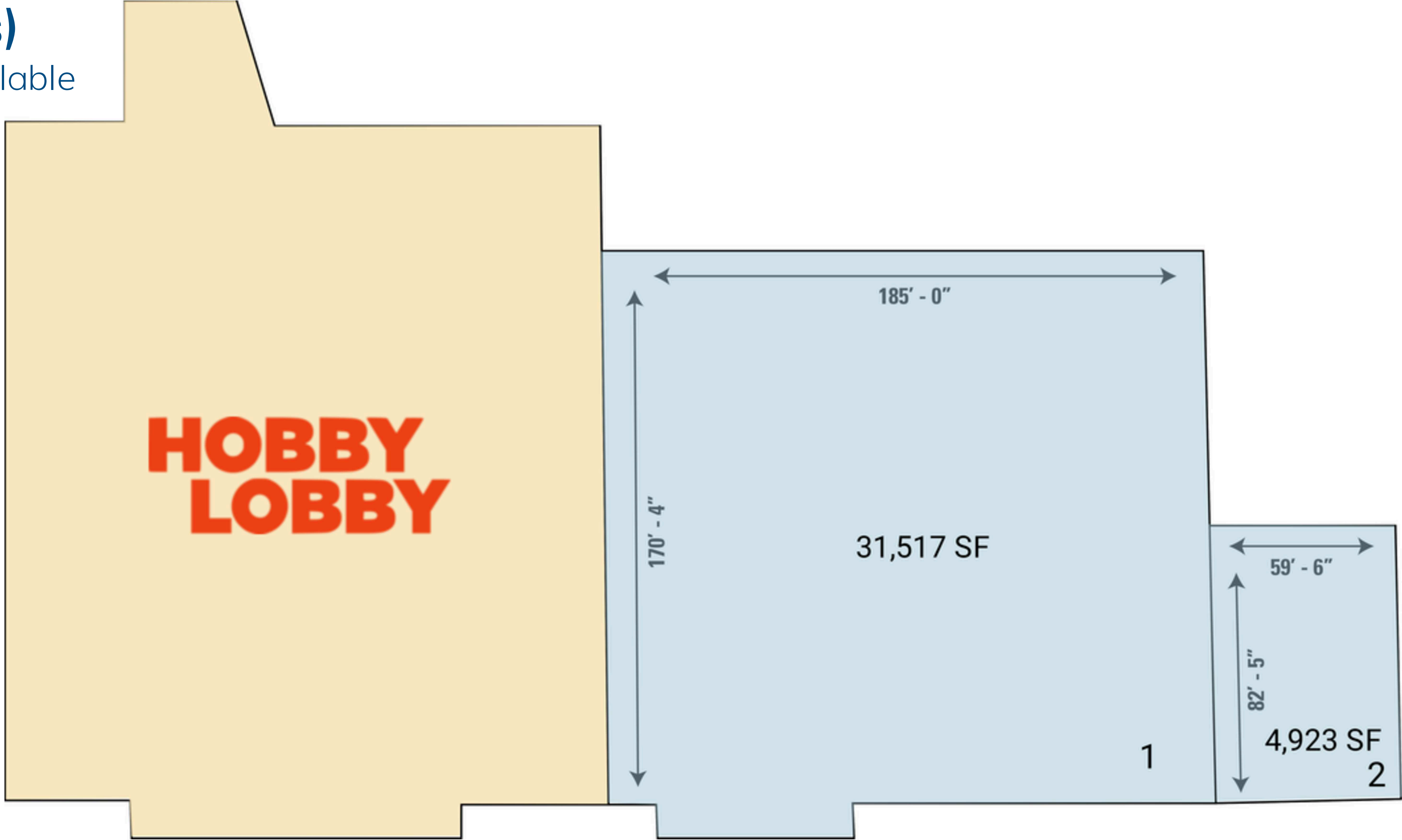
Area Retailers



Site Plan (Spaces)

4,923 - 31,517 SF available

● Space Available



Site Plan

● Space Available

PARKING REQUIREMENTS

OWINGS MILLS, MD
EXISTING RETAIL (SHARED)

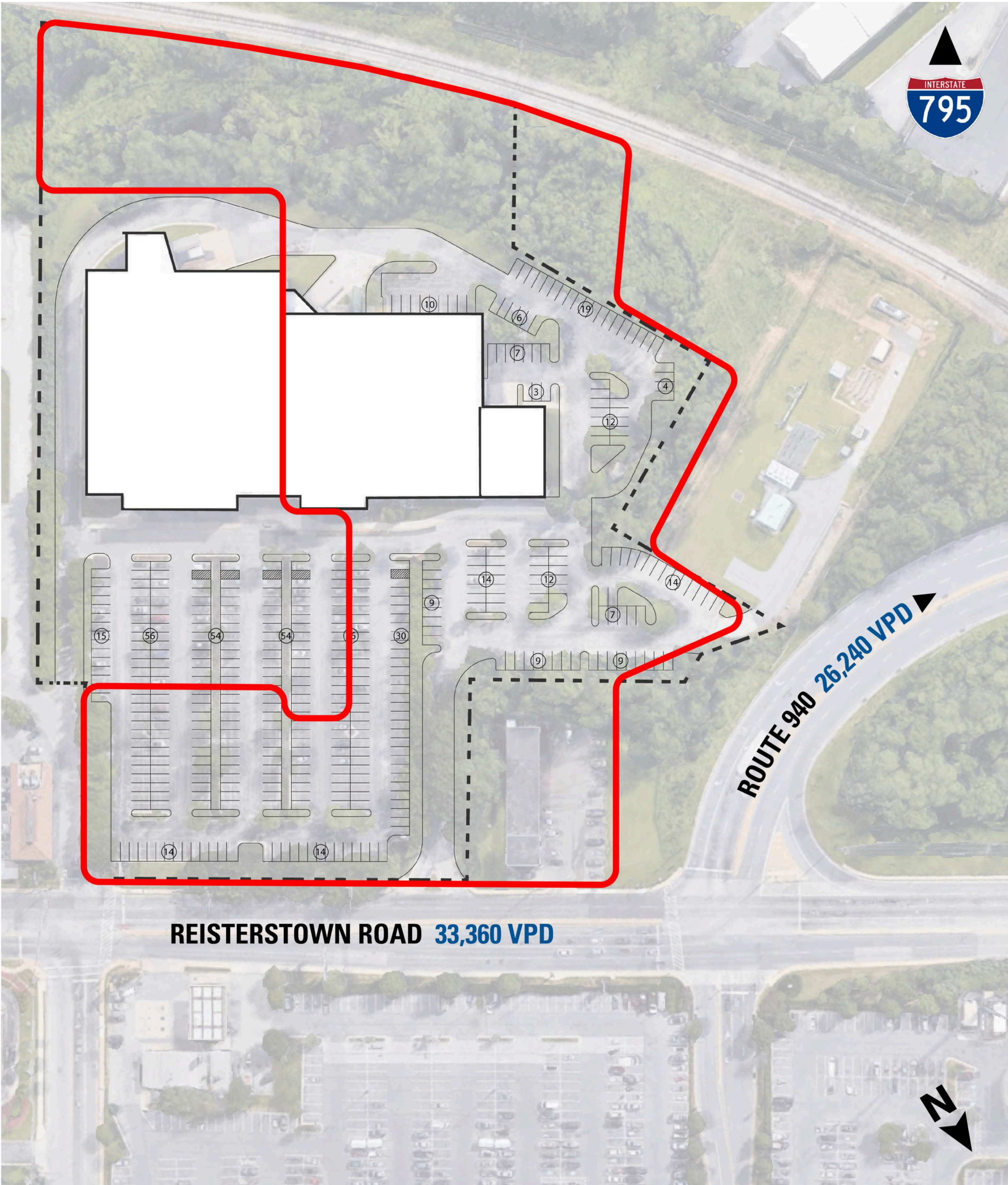
GLA: 77,172

PARKING SPACES: 428

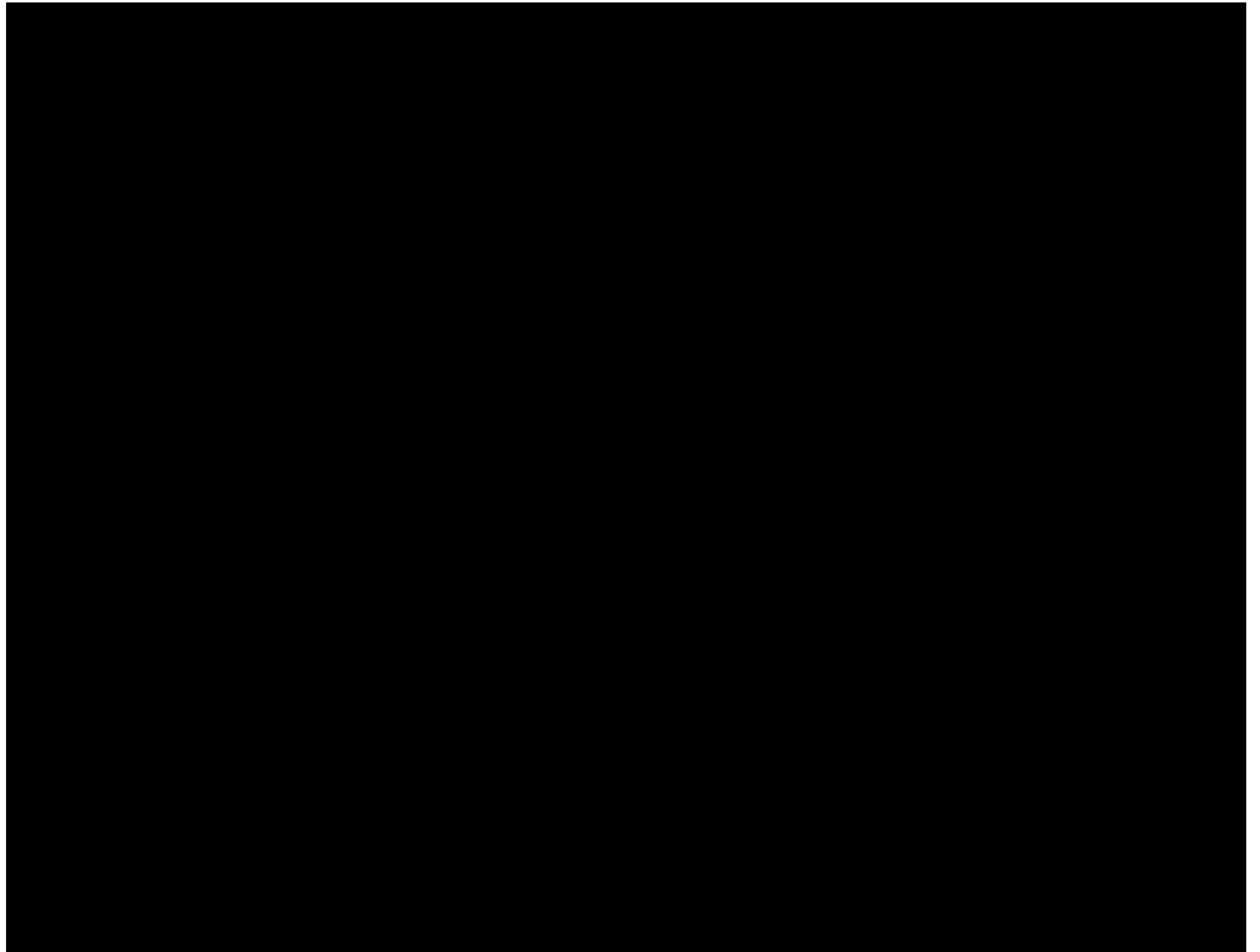
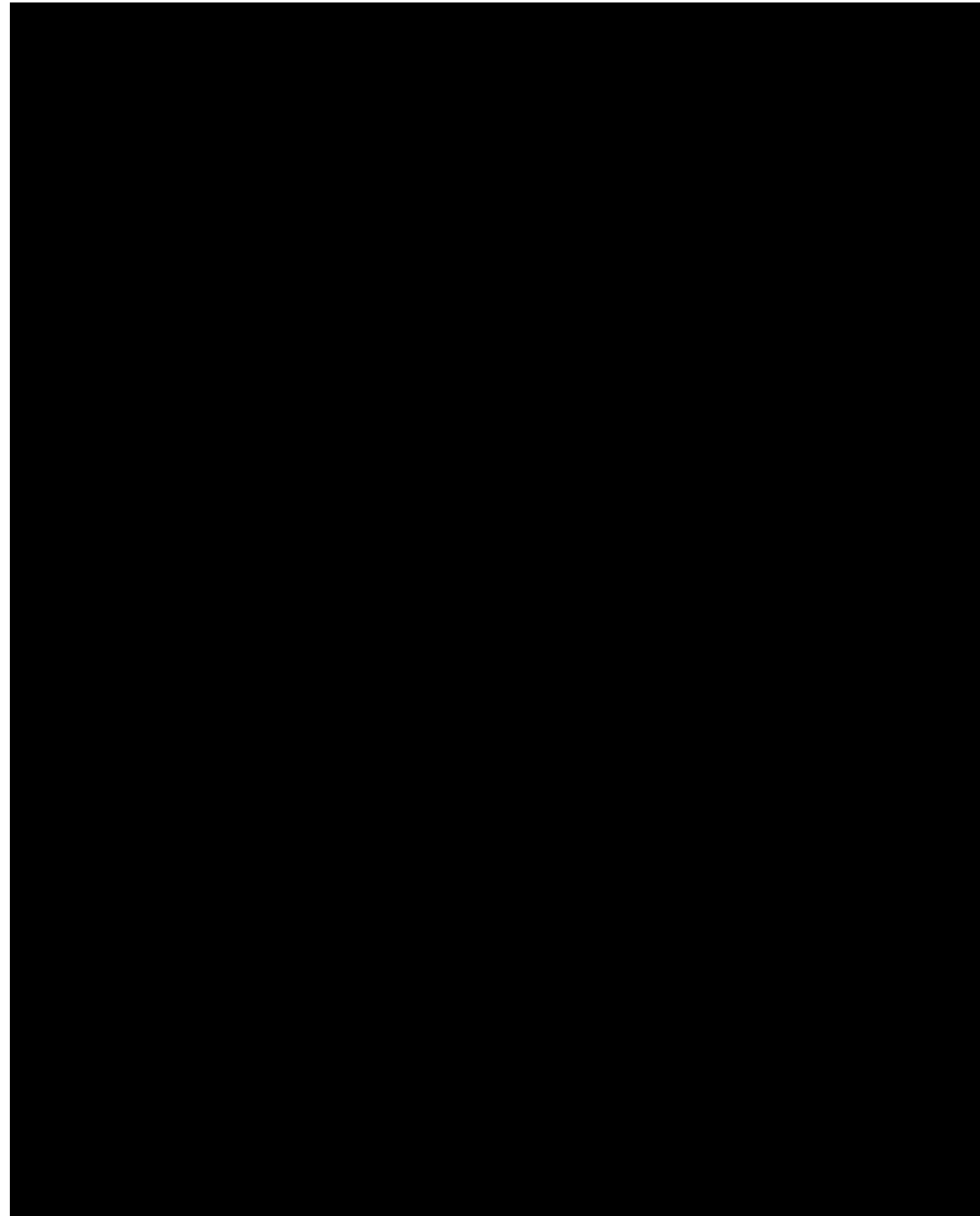
PARKING RATIO ON SITE (/1,000 SF): 5.55

CODE REQUIRES

RATIO (/1,000 SF): 5.00
OF PARKING SPACES: 386



The Property



Discover your next retail opportunity at
rappaportco.com



WASHINGTON, D.C. | MARYLAND | VIRGINIA

10200 REISTERSTOWN ROAD | 10200 REISTERSTOWN ROAD, OWINGS MILLS, MD

Michael Howard | mhoward@rappaportco.com | 571.382.1219