

600
THIRTEENTH



RAPPAPORT

Mike Howard

mhoward@rappaportco.com | 571.382.1219

Melissa Webb

mwebb@rappaportco.com | 571.382.1227

Pat O'Meara

pomeara@rappaportco.com | 571.382.1218

1,624 - 4,607 SF Can Be Combined

TWO RETAIL SPACES AVAILABLE



QUINTESSENTIAL FLAGSHIP RETAIL

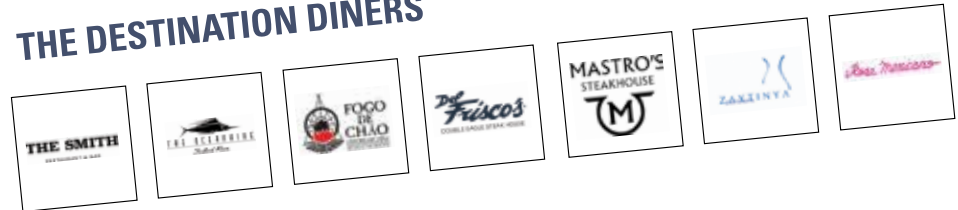
With a pronounced corner location in the heart of Downtown DC, 600 13th Street Northwest is at the intersection of culture, entertainment, fashion and tourism. Whether it's the Capital One Arena to the East, the White House to the West, The Convention Center to the North or the Smithsonian to the South, 600 13th Street Northwest connects with the foot traffic of the District's most desired experiences. From lawyers to lobbyists, foodies to fashionistas, ticket-holders to tourists this block has daily and year-round activity to keep retailers successful.





TAP INTO THE ENERGY OF THIS FASHION AND ENTERTAINMENT DISTRICT Whether They Come To Work, Stay Or Play Downtown DC Attracts

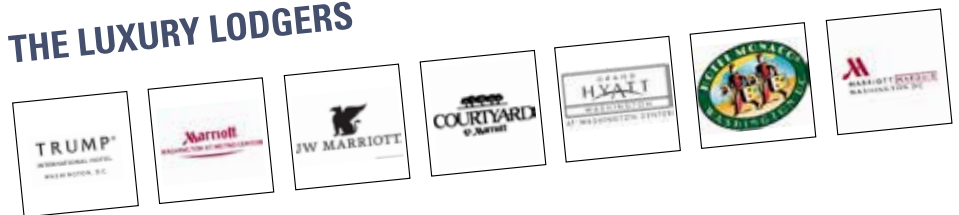
THE DESTINATION DINERS



THE FASHION FORWARD



THE LUXURY LODGERS



THE ENTERTAINMENT ENTHUSIASTS





THE CROWD

THE LOCALS (.5 mile)

4,840 Residents

\$135,130 Average Household Income

35 Median Age

79% College Educated

THE PROFESSIONALS (.5 mile)

Over 4,600 Businesses and Over 90,000 Employees

The Labor Force has Grown by 32.5% Since 2010

87.4% White Collar Workers

THE GUESTS

4.5 Million Unique Hotel Guests Annually

4.4 Million Capitol One Arena Guests

1.1 Million Convention Center Visitors

1.3 Million Visitors Annually National Portrait Gallery

550,000 Visitors Annually National Building Museum

(1 mile)

Over 10,000

Businesses and Over 200,000 Employees

The Labor Force has Grown by 31.4% Since 2010

84.4% White Collar Workers





McPherson Square

15TH ST NW

30,800 VPD

14TH ST NW

13TH ST NW 17,700 VPD



Gallery Place Chinatown
22,375 Riders

600 13TH ST NW
6,231 SF RETAIL
SPACE AVAILABLE



G ST NW

F ST NW

13TH ST NW

E ST NW

D ST NW

12TH ST NW

11TH ST NW

8TH ST NW

D ST NW

PENNSYLVANIA AVE NW 19,000 VPD

9TH ST NW

INDIANA AVE NW



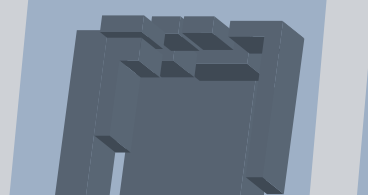
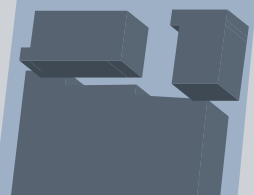
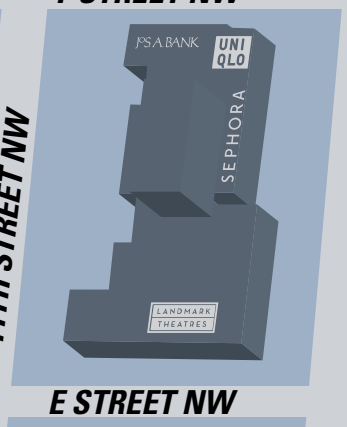
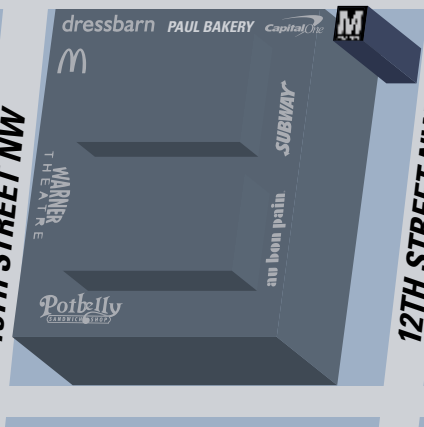
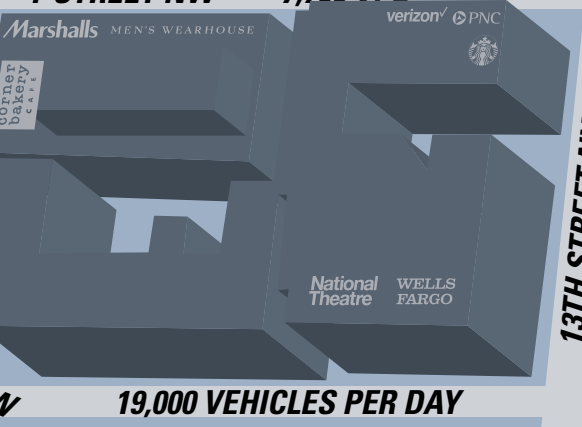
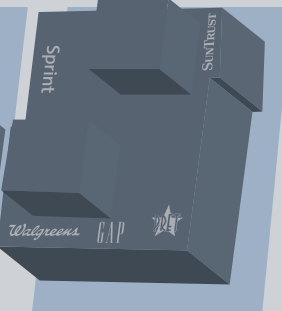
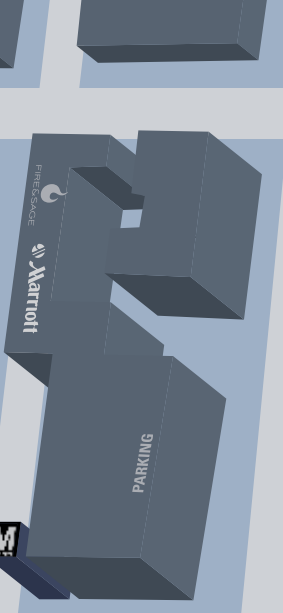
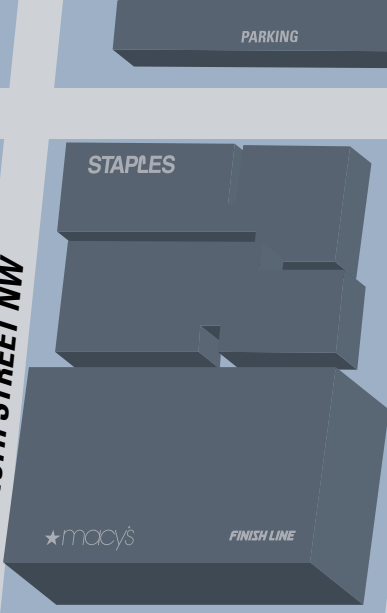
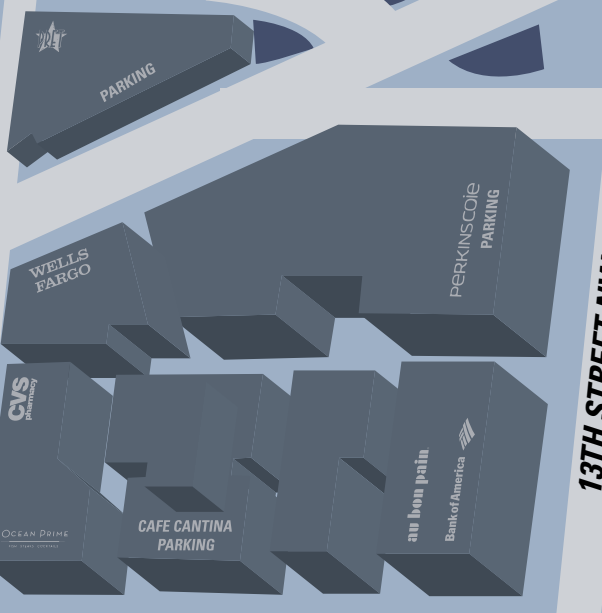
Federal Triangle
7,560 Riders



9TH ST NW

Archives
Navy Memorial
8,628 Riders





Downtown DC is known as a regional shopping destination, where retail stores can capitalize on the experience of place—not just the act of shopping.

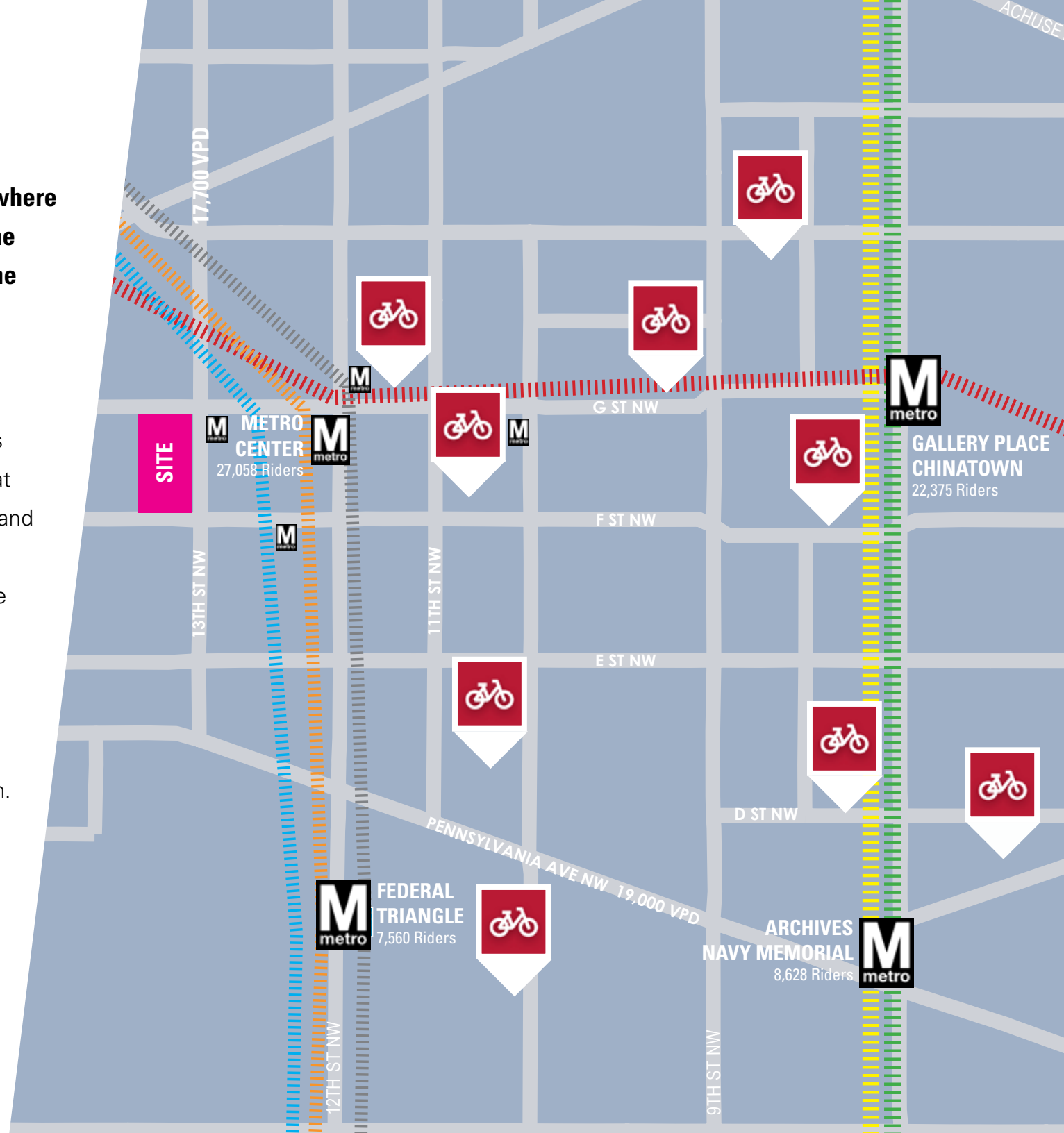
Downtown DC offers generous, walkable streets with mobility for cars, bikes, buses and pedestrians along with a Metrorail network that transports workers and visitors in and out of downtown with ease.

Located across the street from the center of the region's transit network at Metro Center station, which serves over 27,000 riders daily, 600 13th Street Northwest is along the path of millions per month.

95 Walk Score A Walker's Paradise

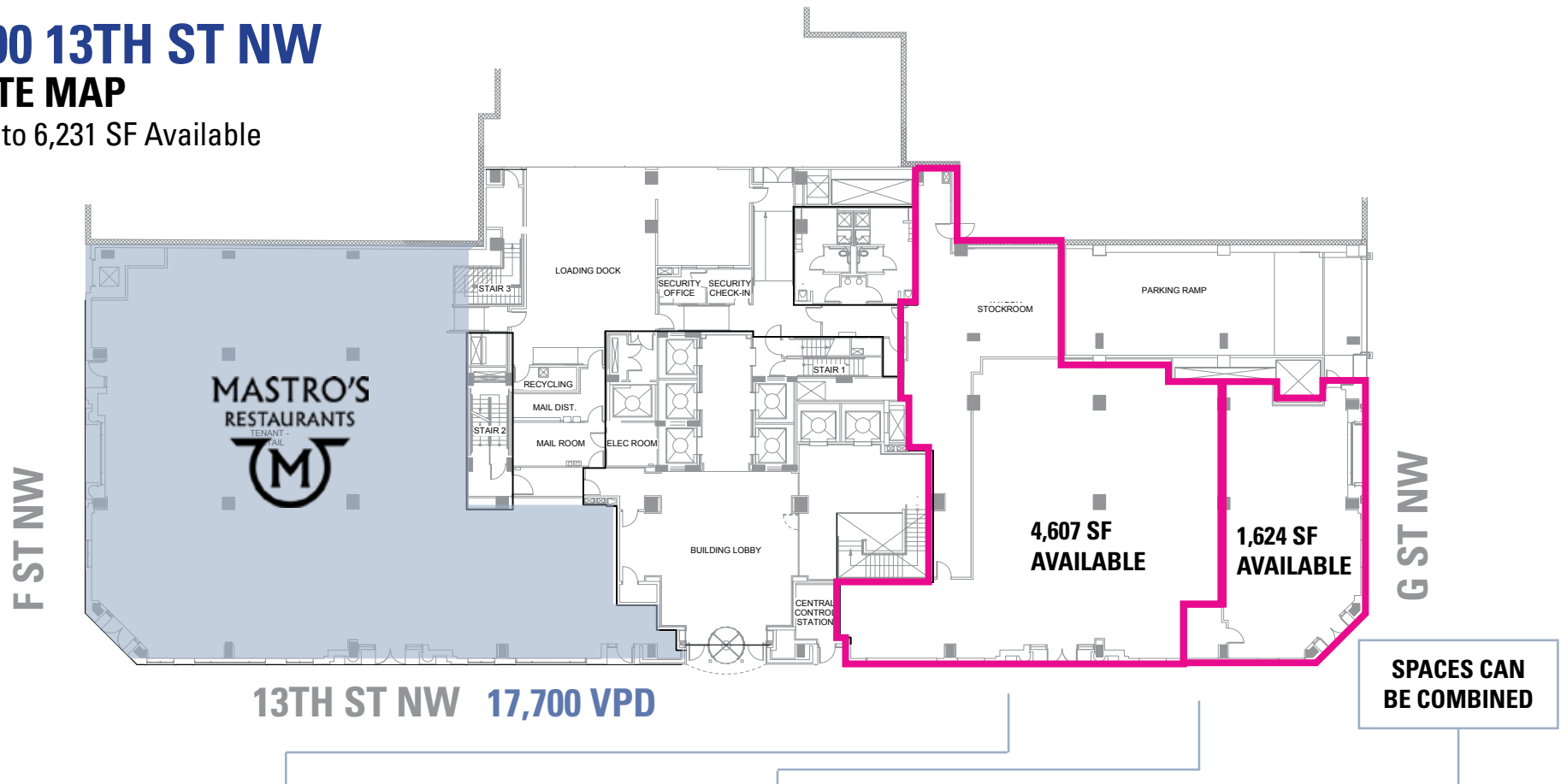
100 Transit Score World Class Public Transportation

180,000 Capital Bikeshare trips end in Downton DC



600 13TH ST NW SITE MAP

Up to 6,231 SF Available



Mike Howard | mhoward@rappaportco.com | 571.382.1219
Melissa Webb | mwebb@rappaportco.com | 571.382.1227
Pat O'Meara | pomeara@rappaportco.com | 571.382.1218

RAPPAPORT

rappaportco.com